



Safer Neath Port Talbot Partnerships
Strategic Intent Document
2024-2027

Contents

Background to Community Safety Partnerships	4
Safer Neath Port Talbot Partnership – Membership	5
Legislation Behind the Partnership	6
Organisation Plans	7
Understanding the Governance of the Safer Neath Port Talbot Partnership	9
Safer Neath Port Talbot Partnership – Governance Structure	10
Safer Neath Port Talbot Partnership – Priorities for 2024-2027	11
PRIORITY 1 Violence against Women, Domestic Abuse and Sexual Violence (VAWDASV)	12
PRIORITY 2 Reducing Anti-Social Behaviour	14
PRIORITY 3 Substance Use	16
PRIORITY 4 Ensuring our communities are cohesive, and that any community tensions are reduced	20
PRIORITY 5 Serious Violence reduction: Safeguarding those at risk of Violence & Exploitation	22
PRIORITY 6 Crime Prevention/Acquisitive Crime	26

Introduction

‘Working in partnership to make Neath & Port Talbot a safer place to live, work and visit.’

This is the Safer Neath Port Talbot Partnerships ‘Strategic Intent Document’ for 2024-2027.

This document outlines the priority areas of our Community Safety Partnership for the next 3 years.

Our local partnership board is a longstanding, action focused forum, committed to improving safety in all of our communities across the borough.

Over the years, the nature of Community Safety has significantly changed, with advances in technology, changes to legislation, new types of crimes, and of course more recently the Covid-19 pandemic.

In December 2022, the Safer Neath Port Talbot Partnership Board held a development day in order to realign their priorities, taking into account the changing community safety landscape. The priorities have been carefully selected in order to reflect the continued challenges.

Our aim is to work together more efficiently and effectively, to make best use all of the resources available to us in our communities, and to build positive, strong and resilient communities where the most vulnerable are supported and protected.



Background to Community Safety Partnerships

Since the Scarman Report in 1981, successive governments recognised that effective partnership working resulted in better crime reduction outcomes. This was consolidated by the Morgan Report in 1991 and culminated in the 1998 Crime and Disorder Act.

This Act established Community Safety Partnerships (CSPs).

Section 5 of the Crime and Disorder Act 1998, defines a Community Safety Partnership as;

“An alliance of organisations which generate strategies and policies, implement actions and interventions concerning crime and disorder within their partnership area”.

Community Safety Partnerships are statutorily responsible for reducing crime and disorder, substance misuse and re-offending in each local authority area.

The make-up and role of CSPs has been altered since 1998, through the Police and Justice Act 2006, Crime and Disorder Regulations 2007, the Local Government and Health Act 2007, the Policing and Crime Act 2009 and finally the Crime and Disorder Regulations 2011.



Safer Neath Port Talbot Partnership – Membership

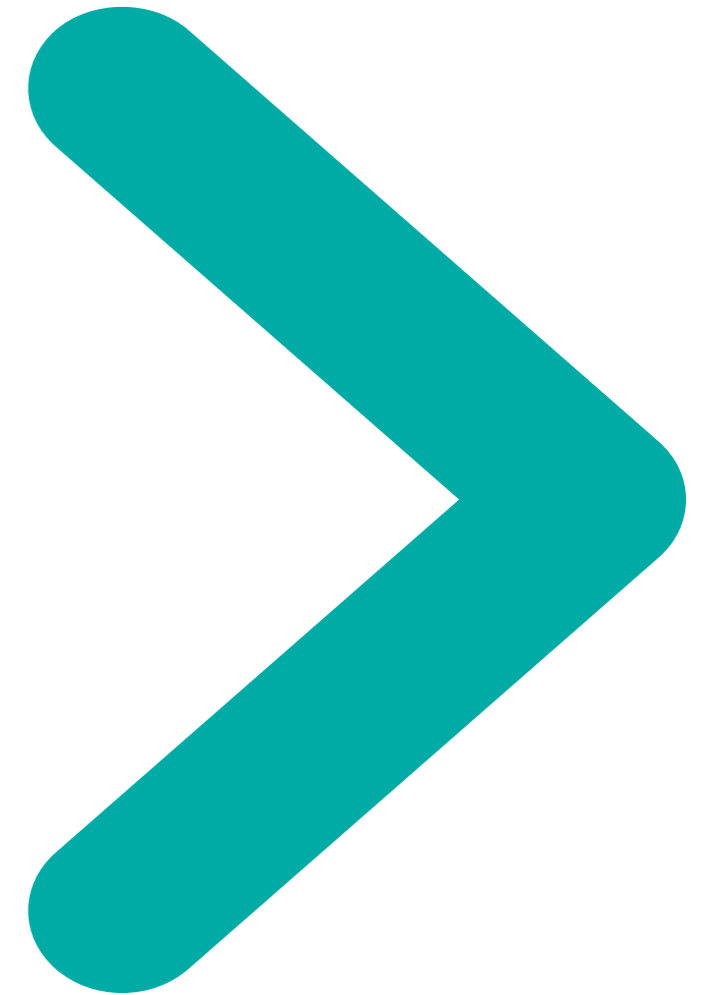
The Safer NPT Partnership Board consists of key representatives from statutory agencies and other organisations with an interest and influence in community safety issues and who are key contributors in the priority setting process.

Statutory Members include:

- NPTCBC Council
- South Wales Police
- Swansea Bay University Health Board
- National Probation Service
- Mid & West Wales Fire and Rescue Service

Other Members include:

- Police and Crime Commissioners Office
- Youth Justice Service
- Cabinet Member for Community Safety & Public Protection
- Western Bay Safeguarding Board
- Western Bay Area Planning Board
- Welsh Ambulance Service
- CVS
- Tai Tarian
- Third Sector representation



Legislation Behind the Partnership

Welsh Government's Safer Communities Programme

The Welsh Government's Safer Communities Programme was established in December 2017 following the completion of the Working Together for Safer Communities Review – Welsh Government's response to the Auditor General's Community Safety in Wales report of the previous year. At the heart of the programme is a new shared vision for community safety in Wales in which:

1. Every community is strong, safe and confident in a manner that provides equality of opportunity and social justice, resilience and sustainability for all;
2. The shared responsibility of government, public and third sector agencies is to work together with the communities they serve and the private sector to address activity or behaviour that is unlawful, anti-social, harmful to individuals and society and to the environment;
3. Sharing knowledge and ensuring early intervention with prompt, positive action tackles local issues and addresses vulnerabilities.

Well-being of Future Generations (Wales) Act 2015

The Well-being of Future Generations (Wales) Act 2015 puts a duty on specified public bodies to act jointly and establish statutory Public Service Boards (PSBs) for each local authority area in Wales. The Safer NPT Community Safety Partnership Board reports into the Neath Port Talbot PSB on a quarterly basis.

Crime and Disorder Act 1998

The Crime and Disorder Act 1998 gave local authorities and police services duties to work together to develop crime and disorder assessments and implement reduction strategies and to work in partnership with other agencies as a Community Safety Partnership - to tackle the identified problems.

Another key strategy taken into consideration when formulating the priorities is the new Serious Violence Duty Dec 2022. The Duty is a key part of the Government's programme of work to collaborate and plan to prevent and reduce serious violence, and to take a multi-agency approach to understand the causes and consequences of serious violence, focusing on prevention and early intervention, and informed by evidence.

The Serious Violence Duty outlines the changes made to section 6 of the Crime and Disorder Act 1998, ensuring preventing and reducing serious violence is a priority for Community Safety Partnerships and requires specified authorities to collaborate and plan to prevent and reduce serious violence

Local Wellbeing Plan

The work and priorities of the Safer NPT Community Safety Partnership will support the development of Local Wellbeing plans.

The priorities set out in this document also co-exist alongside the South Wales Police Chief Constables Delivery Plan 2021-2025 and the Police and Crime Commissioners Police and Crime Plan 2022-2026. These are key strategies that align with the steering group's priorities, both of which strengthen the working links across key partners.

Organisation Plans

This document will support the following existing plans:

NPTCBC Corporate Plan

Wellbeing Objective 2 in the Neath Port Talbot Corporate Plan states;

'People live healthy, long and good lives in thriving and sustainable communities where people get along together and support one another'

The Safer NPT Partnership priorities will support the Council in meeting this objective.

South Wales Police – Local policing priorities

South Wales Police have local policing priorities that are aligned to the broader community safety priorities. These are:

- Drug trafficking and supply / Rape and Serious Sexual offences / Domestic abuse
- Serious violence/ Terrorism and extreme threats / Child exploitation and abuse
- Fraud and Vulnerable Victims / Modern Slavery

South Wales Police & Crime Commissioners Plan for 2022-2026

The Safer NPT Partnership priorities align with those outlined in the South Wales Police & Crime Commissioners Plan for 2022-2026

- reduce and prevent crime and anti-social behaviour to keep people safe and confident in their homes and communities
- involve and empower our communities, working with partners in local government, health, fire and Welsh Government, the third sector and education to deliver services that people need
- work to protect the most vulnerable in our communities, understanding causes and taking prompt positive action as issues arise
- work to make the local criminal justice system efficient and effective to meet the needs of victims and reduce re-offending
- ensure that South Wales Police continues to be a high performing force in terms of the operational response to crime, threats, harm and the detection of offenders
- spend money wisely, playing our part to protect the environment and support our people to provide the best possible policing in your community

The National Probation Service - Reducing Reoffending Plan

The plan illustrates how the Probation Service in Wales will work with partners to reduce reoffending, bring down the costs of crime within communities and protect the public over the next three years.

Mid and West Wales Fire & Rescue - Service Strategic Plan (2022 – 2027)

The Strategic Plan 2022-2027 outlines MAWWFRS five-year Commitments, which they have developed in accordance with the sustainable development principle and incorporated the five ways of working

The Safer Neath Port Talbot Partnership is also directly responsible for the delivery of Community Safety specific actions that come out of these other Partnership plans:

- Neath Port Talbot 'Healthy Relationships for Stronger Communities Strategy' 2023-2026
- Youth Justice Blueprint
- Western Bay Area Planning Board Commissioning Strategy
- Community Cohesion Delivery Plan
- CONTEST West Glamorgan Regional Plan

Swansea Bay University Health Board – Recovery & Sustainability Plan (2023/24 - 2025/26)

The Health Board sets out its aim to become a population health focussed organisation in its Plans, and the tools used to deliver are the Four Pillars, Marmot Principles and a set of Wellbeing Objectives. The Health Board's 'Four Pillar' model acknowledges the role we can play in contributing to improving our population's health. The four-pillar model acknowledges the role the Health Board has as a Healthcare Provider, Employer, Anchor Institution and a Productive Partner. The Health Board sets out its Quality & Safety Vision which includes suicide prevention, multi-agency working and delivering preventative services in the community.

Understanding the Governance of the Safer Neath Port Talbot Partnership

The Neath Port Talbot Public Service Board

The Public Services Board (PSB) brings together senior leaders from public and third sector organisations across the area to work in partnership for a better future. The Community Safety Partnership feeds directly into the PSB and updates on progress made towards the priority areas. The Public Service Board is responsible for agreeing the direction of the Safer NPT Partnership and responsible for transmitting strategic information to inform actions of the partnership.

The Safer NPT Community Safety Partnership Board

The Safer Neath Port Talbot Community Safety Partnership Board is responsible for the overall strategic steer and governance of the partnership. It receives quarterly progress on the priority areas, performance updates and escalated issues and risks from each priority area and its sub groups. It is responsible for scrutinising these updates, making financial decisions and for signing off this Strategic Intent Document and Delivery Plan.

Regional Boards

The Safer NPT Community Safety Partnership Board will share information with, and receive information from, the partnered regional groups to ensure that strategies and delivery plans are aligned and actions are assigned to the most suitable partnership across the landscape. This good communication ensures no duplication across other partnerships and work streams.

Sub Groups & Task and Finish Groups

There are a number of groups responsible for carrying out the work of the Partnership. These groups will report to the Safer Neath Port Talbot Partnership Board who will in turn provide guidance and direction or support to resolve issues and barriers.

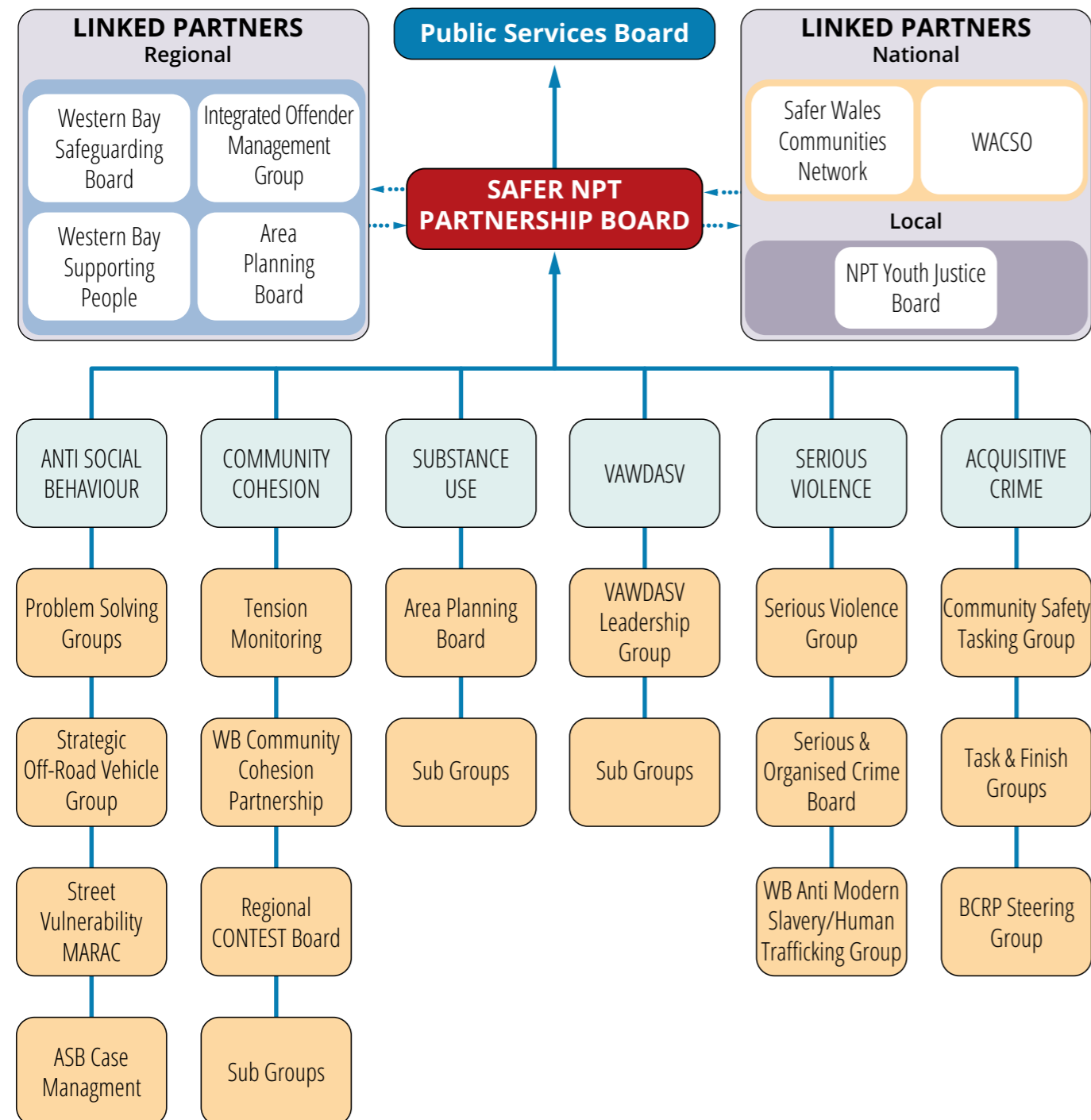
NPTCBC's Community Safety Team

The Council's Community Safety Team are the bridge that joins the wider partnership together in relation to community safety. The Councils Community Safety Team are co-located in Neath Police Station, enabling them to work together with South Wales Police Community Safety colleagues; to receive all incidents of anti-social behaviour across the borough and to proactively prevent issues where evidence and intelligence indicates a probability of impending crime or disorder.

The teams work in regular partnership with other Council departments, including but not restricted to; adult and children's services, education, enforcement and many others, as well as working in close partnership with wider policing teams, probation, health, probation, substance use teams and other third sector organisations across the borough.

The Community Safety Team are responsible for driving forward the work of the Partnership and responding to the issues that arise in relation to the priority areas outlined in this document.

Safer Neath Port Talbot Partnership – Governance Structure



Safer Neath Port Talbot Partnership – Priorities for 2024-2027

This document outlines the 6 agreed priorities of the Safer NPT Partnership. They are all of equal importance.

Working in partnership, the Safer Neath Port Talbot Partnership will ensure it monitors and responds to other specific crime types that present an ongoing problem in NPT.

Each of the partnership priorities will be assigned to the most relevant subgroup, who will be responsible for driving the work forward. Each priority area will be underpinned and supported by individual action plans. Progress will be monitored on a quarterly basis by the Community Safety Partnership Board.

An annual report will be presented to the Public Service Board.

PRIORITY 1
Violence against Women, Domestic Abuse and Sexual Violence (VAWDASV)

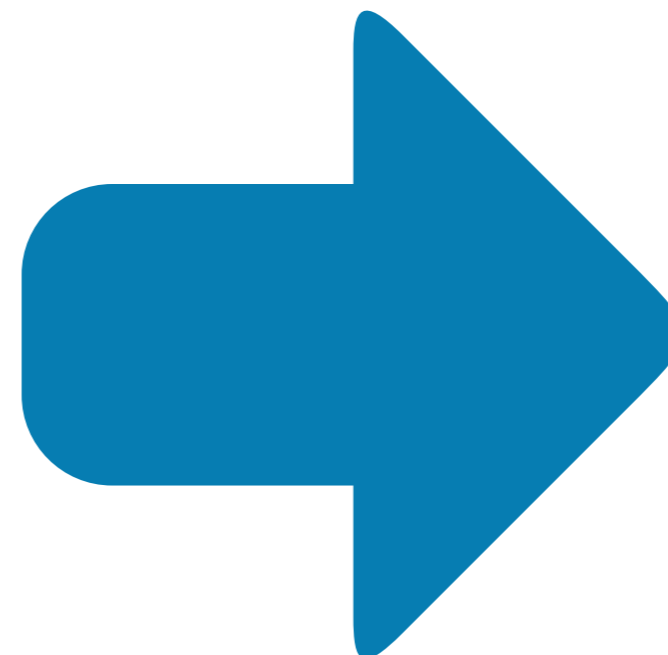
PRIORITY 2
Anti-Social Behaviour

PRIORITY 3
Substance Use

PRIORITY 4
Community Cohesion

PRIORITY 5
Serious Violence

PRIORITY 6
Acquisitive Crime



PRIORITY 1

Violence against Women, Domestic Abuse and Sexual Violence (VAWDASV)

Key Areas of focus

- Communications & Engagement
- Children & Young People
- Perpetrators
- Early Intervention & Prevention
- Training
- Accessible Services
- Criminal Justice



Why is this a priority?

The objectives within our local VAWDASV strategy¹ 'Healthy Relationships for Stronger Communities' are derived from those in the WG National Strategy 2022-26. Having similar objectives within NPT enables us to demonstrate how we will support the Welsh Government in achieving its policy objectives regarding Violence Against Women, Domestic Abuse and Sexual Violence. These objectives support our vision;

"To prevent and eradicate gender based violence by promoting: equality; safety; respect; and, independence to enable everyone to live free from abuse and the attitudes that perpetuate it."

Our aims and strategic intentions

In line with Welsh Government's National Strategy² on Violence against Women, Domestic Abuse and Sexual Violence (2022-2026³), we have seven objectives:

1. Increase reports of Violence Against Women, Domestic Abuse and Sexual Violence in Neath Port Talbot, through awareness raising and challenging attitudes.
2. Increase awareness in children, young people and adults of the importance of safe, equal and healthy relationships and empowering them to positive personal choices.
3. Increase the focus on holding those who commit abuse to account and supporting those who may carry out abusive or violent behaviour to change their behaviour and avoid offending.
4. Make early intervention and prevention a priority – To reduce the number of repeat victims and reduce the number of high risk cases.
5. Relevant professionals are trained to provide effective, timely and appropriate responses to victims and survivors.

6. Provide all victims with equal access to appropriately resourced, high quality, needs-led, strength-based, inter-sectional and responsive services across Wales.
7. Increase focus on improving the recognition of, and responses to VAWDASV in all Criminal Justice proceedings³.

Outcomes we want to achieve

- Increase in referrals to local specialist services, and to Police and Health
- All victims to have equal access to appropriate services
- VAWDASV is 'everyone's business'; Negative attitudes are challenged and communities are educated and better informed of the issues around VAWDASV
- Victims and perpetrators are offered support at the earliest possible time and to prevent cases reaching a point of crisis
- Perpetrators are held to account
- Victims are fully informed and supported through the Civil and Criminal justice system
- Professionals are more informed and confident in reporting incidents of abuse

¹ Healthy Relationships For Stronger Communities Strategy 23-26 Final Version.pdf

² Violence against women, domestic abuse and sexual violence: strategy 2022 to 2026 [HTML] | GOV.WALES

³ This is a local, additional objective that is not included in the WG National Strategy

PRIORITY 2

Reducing Anti-Social Behaviour

Key areas of focus

- Anti-Social Behaviour (ASB)
- Street Vulnerability MARAC
- Evening & Night Time Economy



ZERO TOLERANCE

iStock™
Credit: Kameleon007

Why is this a priority?

- Anti-social behaviour is an underreported crime. Through the partnership we must continue to raise awareness of what constitutes Anti-Social Behaviour and how it should be reported
- Anti-social behaviour is not as a series of isolated incidents but is a pattern of behaviour that is almost always repetitive and oppressive, often directed at victims who are vulnerable and live in more deprived areas and is often a prediction of more serious offending later down the line
- ASB can devastate communities and can have a profound impact on victims. Any behaviour that intimidates residents or puts them and visitors at risk in our communities is completely unacceptable and will not be tolerated
- Proactively dealing with ASB and providing sustainable solutions will increase public confidence in the partnership and will facilitate increased reporting in this area and the levels of community intelligence

Our aims and strategic intentions

- Continuously deliver a victim-focused response to ASB
- Develop prevention and early intervention initiatives in partnership to ensure a holistic approach to problem solving
- Work in partnership through our local Problem Solving Groups and Contextual Safeguarding Group to safeguard vulnerable victims and perpetrators of ASB
- Continue to raise awareness of what constitutes ASB within our communities, to encourage reporting via the appropriate mechanisms
- Work with partners and residents to address neighbourhood and cross border issues
- Challenge irresponsible business practice through licencing and trading standards functions
- Working in partnership to improve fire safety and fire prevention
- Work in partnership to mitigate the effects and consequences of off-road biking

Outcomes we want to achieve

- A reduction in the number of repeat victims to incidents of ASB and neighbourhood crime
- Development of a comprehensive ASB profile for the borough, to inform operational tactics
- Correct procedures to report ASB are widely known in our communities
- Improvements in the way issues and concerns are and escalated to Problem Solving Groups and outcomes monitored
- Aim to reduce the number of deliberate fire incidents/ off road biking incidents

PRIORITY 3

Substance Use

Key areas of focus

- Engagement
- Interventions and Treatment
- Prevention and Health Improvement
- Enforcement (SWP)



Why is this a priority?

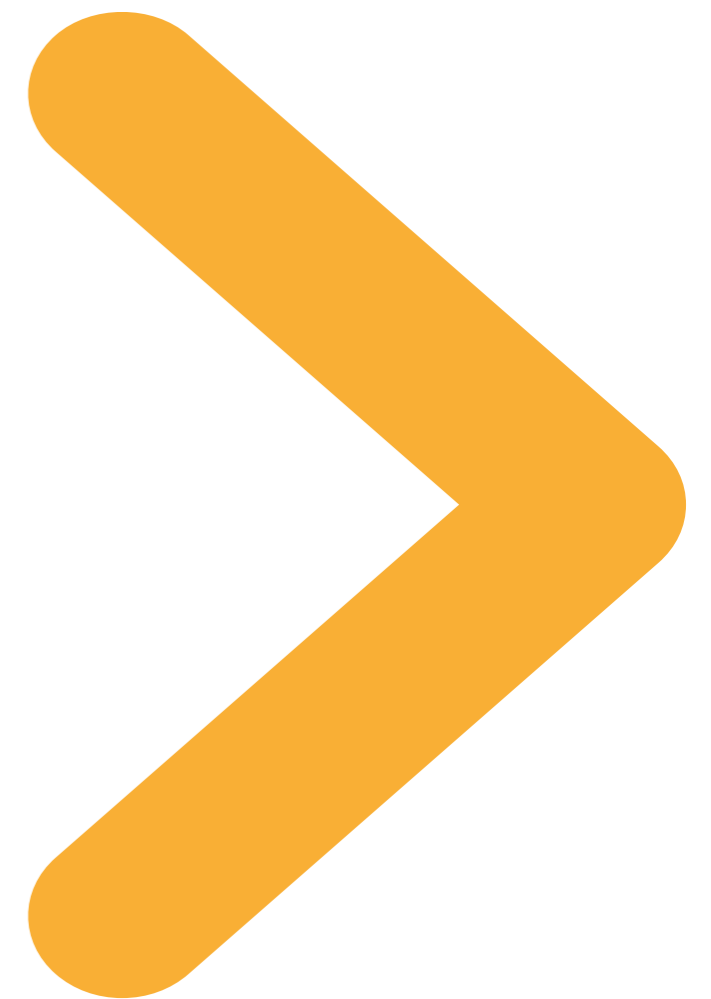
- Welsh Governments Substance Misuse Delivery Plan 2019-2022⁴ outlines key priorities that have been focused on over the past 3 years
- The plan built on the good progress made in the lifetime of the previous 2008-18 strategy, 'Working Together to Reduce Harm' which saw progress of key harm interventions
- NPT has a high number of drug related deaths
- Western Bay Drugs Commission has been developed and is underway

Our aims and strategic intentions

- Reducing harms and relative risks associated with drug and/or alcohol use
- Timely support for people to improve their health and aid and maintain their recovery
- Supporting and protecting families
- Tackling substance availability and protecting individuals and communities
- Stronger partnerships, workforce development and Service User Involvement
- Recognise the realities of poverty, class, racism, social isolation, past trauma, sex based discrimination and other social inequalities that affects people's vulnerability and capacity to effectively deal with drug related harm

Outcomes we want to achieve

- Reduce the number of drug related deaths in Neath Port Talbot (and Swansea)
- Reduce the harms associated with substance use
- Embed Service User involvement into delivery and planning of services
- Substance use issues are identified and challenged early through strong partnership working and information sharing
- Everyone across the region affected by substance use issue can access timely, evidence based, safe and effective quality services



The ONS data for deaths relating to drug misuse per Local Authority in Wales

AREA	2021	2020	2019	2018	2017	2016	2015
Isle of Anglesey / Ynys Môn	1	7	10	4	2	2	3
Gwynedd / Gwynedd	6	4	6	5	9	8	3
Conwy / Conwy	9	5	5	5	2	7	6
Denbighshire / Sir Ddinbych	2	2	2	8	5	3	3
Flintshire / Sir y Fflint	8	5	5	8	9	4	9
Wrexham / Wrecsam	12	12	11	6	7	4	3
Powys / Powys	6	7	10	3	2	4	6
Ceredigion / Ceredigion	3	3	4	7	1	8	5
Pembrokeshire / Sir Benfro	11	2	3	7	6	5	4
Carmarthenshire / Sir Gaerfyrddin	15	7	9	11	19	10	4
Swansea / Abertawe	28	34	22	36	43	26	29
Neath Port Talbot / Castell-nedd Port Talbot	13	11	4	14	19	24	15
Bridgend / Pen-y-bont ar Ogwr	14	11	10	14	8	7	5
Vale of Glamorgan / Bro Morgannwg	3	4	4	12	6	7	7
Cardiff / Caerdydd	26	10	17	15	13	27	16
Rhondda Cynon Taf / Rhondda Cynon Taf	21	9	17	23	16	23	17
Merthyr Tydfil / Merthyr Tudful	8	4	3	6	3	1	9
Caerphilly / Caerffili	12	2	7	7	6	6	5
Blaenau Gwent / Blaenau Gwent	3	1	6	3	2	5	5
Torfaen / Tor-faen	1	2	4	4	1	7	3
Monmouthshire / Sir Fynwy	0	4	3	1	3	3	2
Newport / Casnewydd	8	3	3	9	3	1	9



PRIORITY 4

Ensuring our communities are cohesive, and that any community tensions are reduced

Key areas of focus

- Community Cohesion
- Hate Crime
- Extremism



Why is this a priority?

- Any acts or threats of violence, property damage, harassment, intimidation, or other crimes motivated by hate and bias have debilitating effects on victims and wider communities and impact directly on community cohesion
- Confidence in the partnerships ability to both educate and deal effectively with these issues will increase reporting and ensure our joint response is both informed and robust
- Community cohesion is critical to maintaining safer communities and both an understanding and the implementation of strategies to calm local and regional tensions will achieve this goal
- Doing our very best to be proactive as a partnership to deliver locally on the Government's CONTEST Strategy, i.e., Prevent, Pursue, Protect and Prepare, to counter any rise in extremism and acts of terrorism that is critical to community cohesion and safety of the public
- We need the support and confidence of communities to improve our ability to identify those people who are most vulnerable to radicalisation and who may need support and intervention

Our aims and strategic intentions

- Ensure we deliver on the Welsh Government Community Cohesion Strategic Framework and 'Hate Hurts Wales' agenda
- Increase victims confidence to report incidents of hate crime and to improve third party reporting
- Ensure staff are trained on reporting hate crime/hate incidents through Victim Support or suitable provider
- Through communications campaigns, encourage more residents to be 'supportive bystanders' if they witness any incidents on hate
- To appropriately support victims of hate crimes
- Ensure we safeguard those at risk of radicalisation
- Ensure frontline professionals are trained in the Prevent duty and referral process
- Maintain a strong focus on community cohesion activities and tension monitoring

Outcomes we want to achieve

- More people are reporting hate crime they experience, and feel well supported
- Offer regular training and awareness of hate crime and Prevent for front line staff
- Increase the number of Prevent Referrals through education and training
- Improved public trust and confidence that support is available and that everybody is treated fairly
- Ensure people know what to do if they are concerned about someone who is vulnerable to radicalisation or think are being radicalised

PRIORITY 5

Serious Violence reduction: Safeguarding those at risk of Violence & Exploitation

Key areas of focus

- Exploitation/Victimisation
- County Lines
- Knife crime
- Modern slavery
- Serious violence
- Offensive Weapons Homicide Reviews
- Domestic Homicide Reviews
- Contextual safeguarding

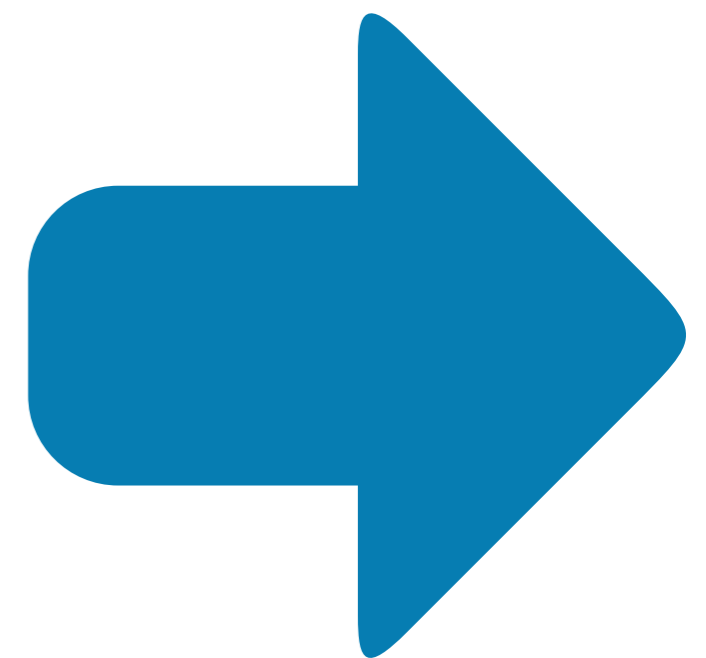
iStock™
Credit: Anna Frank

Why is this a priority?

- Serious violence has a devastating impact on lives of victims and families, and instils fear within communities and is extremely costly to society. Incidents of serious violence have increased in England and Wales since 2014. The newly introduced Home Office Serious Violence Duty⁵ is a key part of the Government's programme of work to collaborate and plan to prevent and reduce serious violence: taking a multi-agency approach to understand the causes and consequences of serious violence, focusing on prevention and early intervention, and informed by evidence
- Tackling serious violence has been a key aim for the Police and Crime Commissioner since 2012, using data sharing with health to pinpoint where and how violence occurs. Working closely with the Violence Prevention Unit, we can seek to understand the epidemiology of violence, and using this evidence to develop interventions focused on tackling the root causes of violence
- We recognise the significant impact youth violence and exploitation can have on a young person's safety, health and wellbeing. The Local Authority are committed to reducing youth violence in Neath Port Talbot and providing the right service at the right time to young people who have been adversely affected by youth violence
- Through our contextual safeguarding board we need to consider the context of where this harm occurs, which is often outside of the family environment and in the places where young people spend time

Our aims and strategic intentions

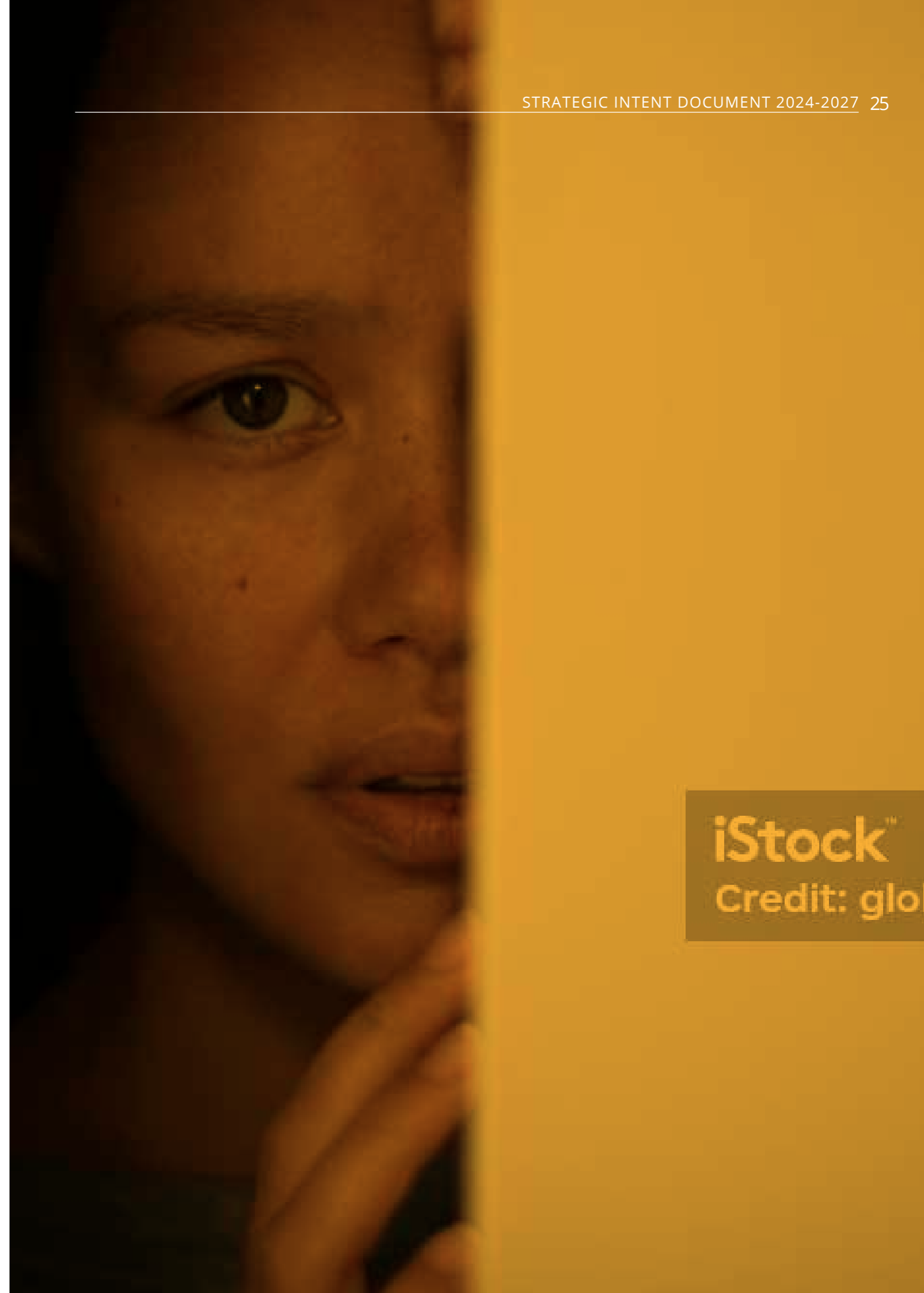
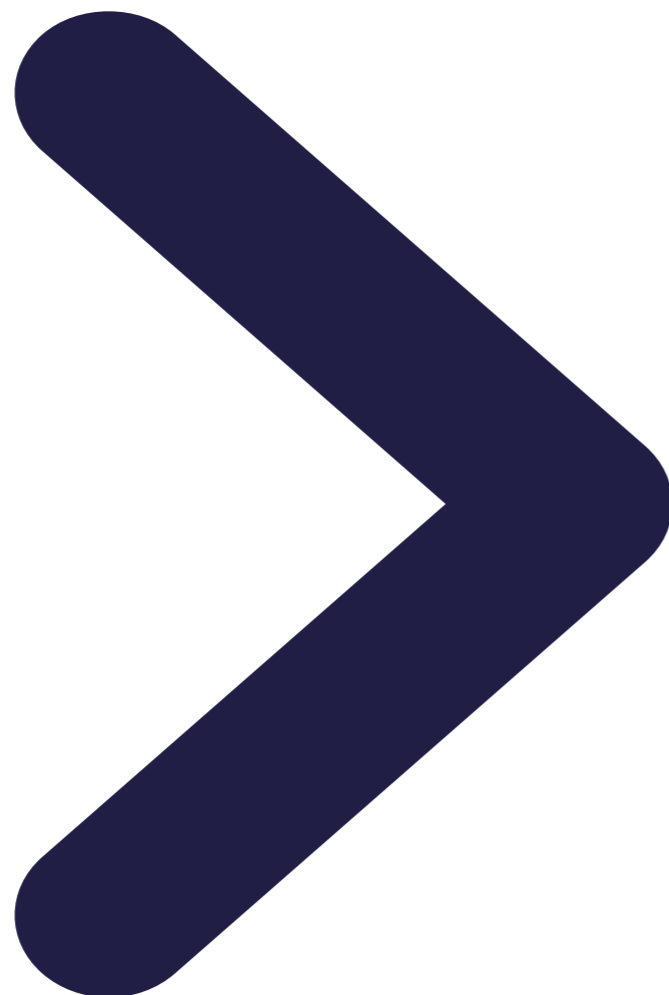
- Tackle hidden, high harm crimes such as modern slavery
- Partnership response to tackling violent crime, including; knife crime, serious youth violence, group offending and gang violence
- Take a safeguarding approach to both victims and perpetrators of violent crime, adopting a public health approach to addressing violence
- Ensure access to statutory mental health support for both victims and perpetrators of violence
- Ensure arrangements are in place throughout the partnership to effectively prevent and address both Child Criminal Exploitation and Child Sexual Exploitation
- Ensure intelligence is shared and activity is informed to provide both a preventative and enforcement response to county lines throughout partnership arrangements



⁵ <https://www.gov.uk/government/publications/serious-violence-duty>

Outcomes we want to achieve

- Strategic Needs Assessment to be completed for the South Wales Police force area relating to the Serious Violence Duty
- Serious Violence Problem Profile completed for NPT
- Development of a local Serious Violence action plan to address issues and provide partnership solutions to tackling the issues
- Development of prevention and intervention initiatives
- A holistic safeguarding approach offered to all young people who experience significant Extra Familial harm
- Operational and Strategic approach to disrupting those that exploit young people.
- A multi-agency approach to recognising and preventing early indicators of youth violence and child exploitation
- Effective multi agency information sharing that supports the disruption of youth violence and exploitation
- Identification and disruption of Exploitation by organised crime groups (OCG)
- Development of safety within the places and spaces young people spend time



iStock™
Credit: glo

PRIORITY 6

Crime Prevention/Acquisitive Crime

Key areas of focus

- Burglary
- Shoplifting
- Robbery
- Car Crime
- Fly tipping/Graffiti/Dog Fouling

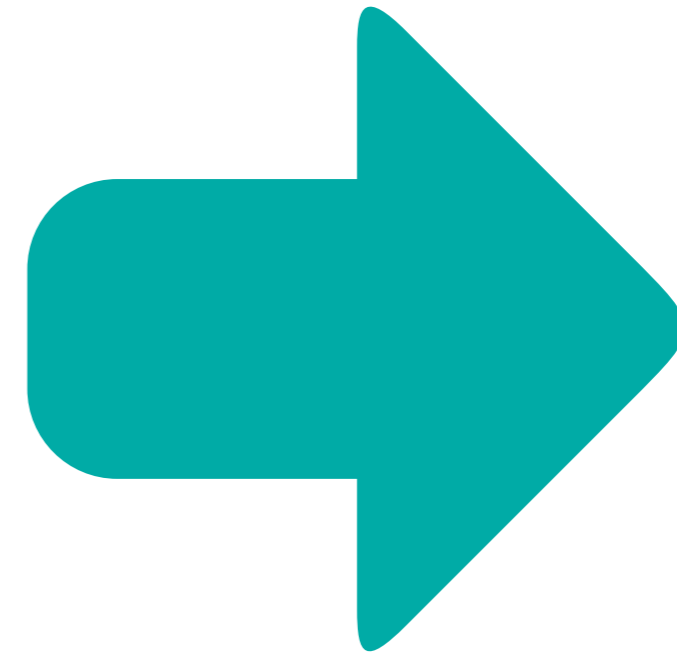


Why is this a priority?

- Our residents consistently tell us that acquisitive crime and the fear of these types of crimes is what matters to them
- Previous evidence has demonstrated an association between changes in the economy and criminal behaviour, and suggests that economic recession and the cost of living crisis could lead to an increase in acquisitive crime
- The look and feel of a local area has a direct link to residents' fear of crime and whether or not they feel safe where they live, shop and spend their leisure time

Outcomes we want to achieve

- Continue to tackle acquisitive crimes like burglary with a focus on prolific offenders
- Develop early intervention and prevention initiatives in partnership to ensure a holistic approach to problem solving
- Ensure delivery of a proactive, effective Business Crime Reduction Partnership
- Utilise our Community Safety Engagement Team and the 'Paws on Patrol' scheme to ensure continued bespoke community events that raise awareness of crime prevention, reporting mechanisms, target hardening
- Work with the Crime Reduction Tactical Advisors to help people feel safer, and be safer
- Further develop our 'Feel Safe' Scheme for the most vulnerable in our communities
- Maintain a strong social media presence to raise awareness of relevant crime prevention, community safety campaigns and initiatives





Cyngor Castell-nedd Port Talbot
Neath Port Talbot Council

Working Together

The delivery of this document will be overseen by the Safer Neath Port Talbot Partnership and it will ensure that all delivery plans are reflective of changes in the landscape and the real time needs of our communities and residents.

The Neath Port Talbot Council's Community Safety Team are responsible for the coordination and secretariat of the Partnership. They are always keen to hear from those who live and work in the borough in order to create an effective partnership.

If you would like to get involved or have any thoughts that you would like to share with us, then please contact us on communitysafety@npt.gov.uk