



## ALL CHILDREN HAVE THE BEST START IN LIFE

WE WILL WORK TOGETHER TO:



Take a co-ordinated approach to supporting the mental health and well-being of our children and young people so they are able to flourish and thrive.



Ensure that when our youngest children start school they are confident and ready to learn.



Ensure better alignment of early intervention services in order to meet the needs of our children, young people and their families.



Support and advise our school leavers to increase access to employment, education or training.



## ALL OUR COMMUNITIES ARE THRIVING AND SUSTAINABLE

WE WILL WORK TOGETHER TO:



Make sure those who need help and support with the cost of living know what support is available and how to access it



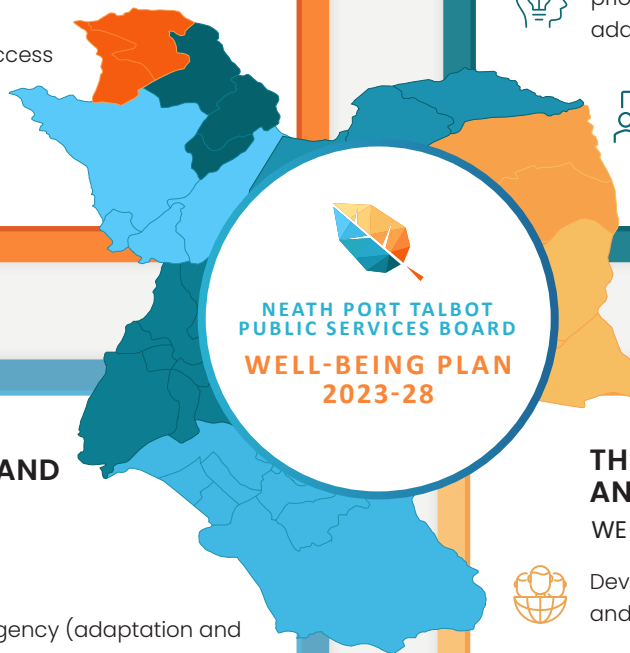
Identify gaps in help and support and how those gaps could be addressed.



Revisit the work undertaken with the support of the Bevan Foundation prior to the pandemic and reset the strategic objectives and actions to address the root causes of poverty now.



Collaborate with our communities, to reduce crime, the fear of crime and to make our communities safer and more cohesive.



NEATH PORT TALBOT  
PUBLIC SERVICES BOARD

WELL-BEING PLAN  
2023-28

## OUR LOCAL ENVIRONMENT, CULTURE AND HERITAGE CAN BE ENJOYED BY FUTURE GENERATIONS

WE WILL WORK TOGETHER TO:



Take collaborative action to tackle the climate emergency (adaptation and mitigation).



Take collaborative action to tackle the nature crisis and improve the health of our ecosystems.



Take collaborative action to identify the interdependencies between actions around maintaining and enhancing resilient communities and a resilient natural environment.



Encourage engagement and participation in cultural activities and the celebration and preservation of our cultural assets.



## THERE ARE MORE SECURE, GREEN AND WELL PAID JOBS AND THAT SKILLS ACROSS THE AREA ARE IMPROVED

WE WILL WORK TOGETHER TO:



Develop Circular and Foundational economies and promote local people and businesses to spend more money in NPT.



Encourage a regenerative local economy where the impacts of production and consumption are reduced.



Increase the number of apprenticeship, traineeship and work placement opportunities in the local area and support more people to access them



Support more people to achieve the necessary level qualifications linked to the skills that local employers need now and in the future.



Ensure local businesses, local people and communities have maximum benefit from external major investment for the area both existing and planned.

