



Cyngor Castell-nedd Port Talbot
Neath Port Talbot Council

Planning Committee

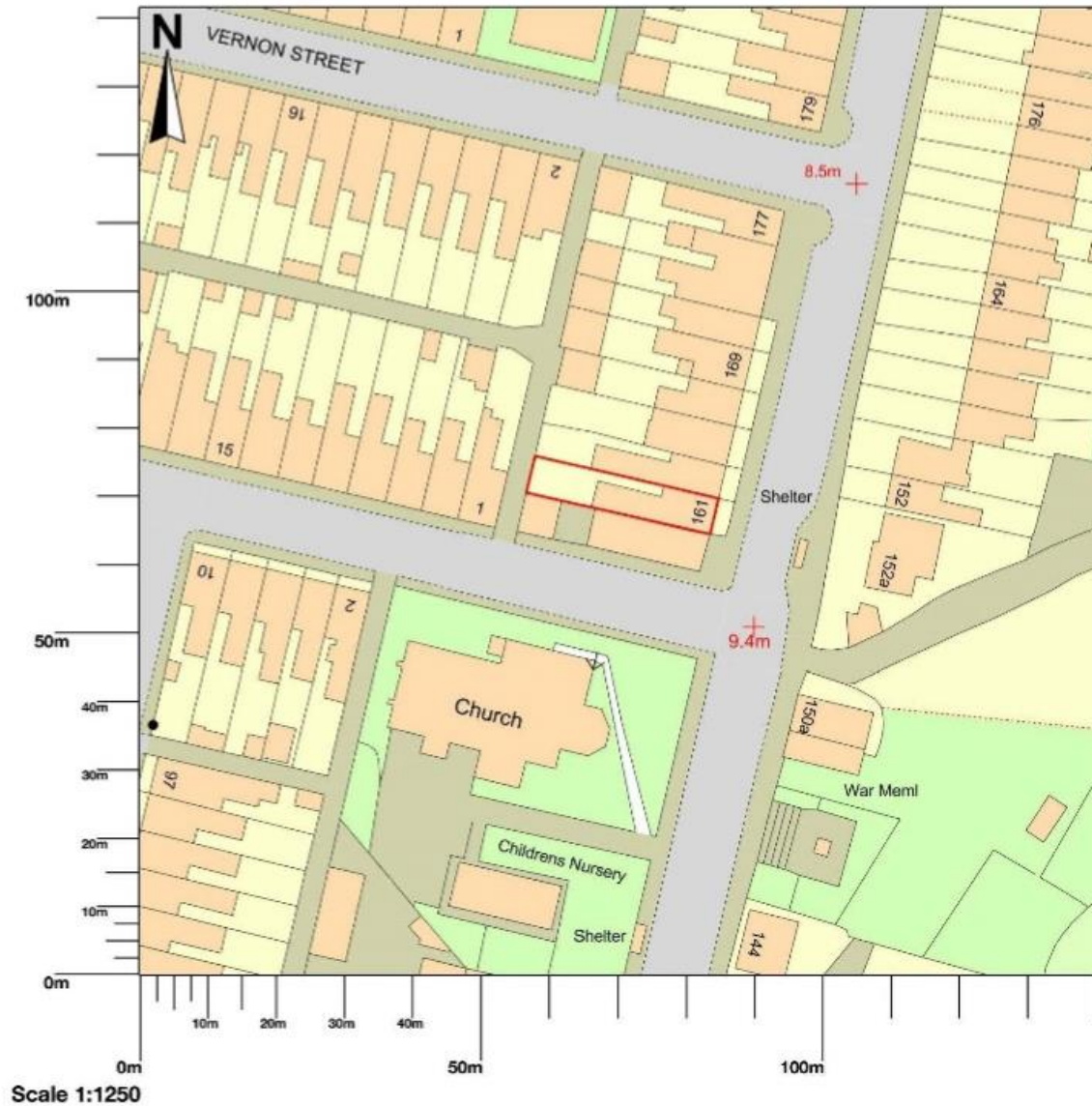
(Remote) 20th July 2021

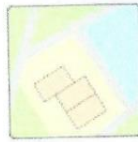


Cyngor Castell-nedd Port Talbot
Neath Port Talbot Council


<u>APPLICATION NO:</u> P2021/0637	<u>DATE:</u> 21/06/2021
PROPOSAL:	Change of Use from Residential (Use Class C3) to a 5 bed House of Multiple Occupation (HMO)(Use Class C4).
LOCATION:	161 Neath Road, Briton ferry, Neath SA11 2BX
APPLICANT:	Mr Richard Hanney
TYPE:	Full
WARD:	Briton Ferry East


161 Neath Road, Briton Ferry, Neath, SA11 2BX





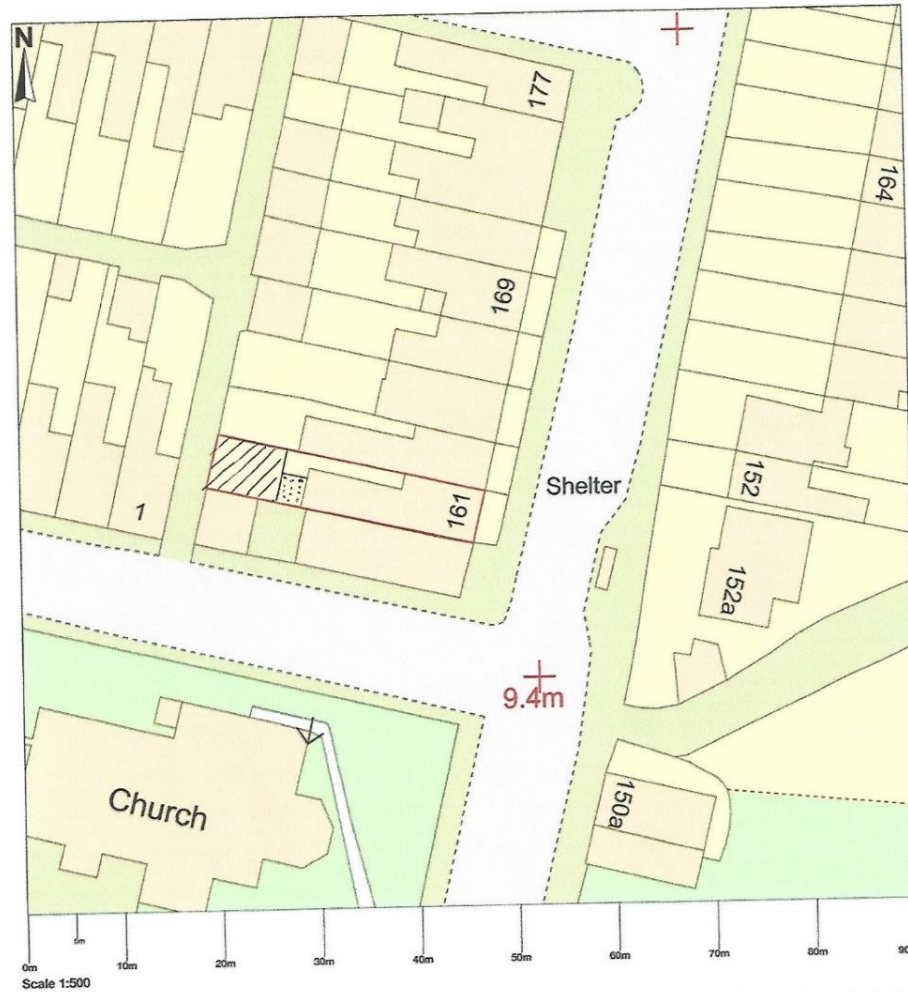
**UK
Planning
Maps**

 = Cells Parking

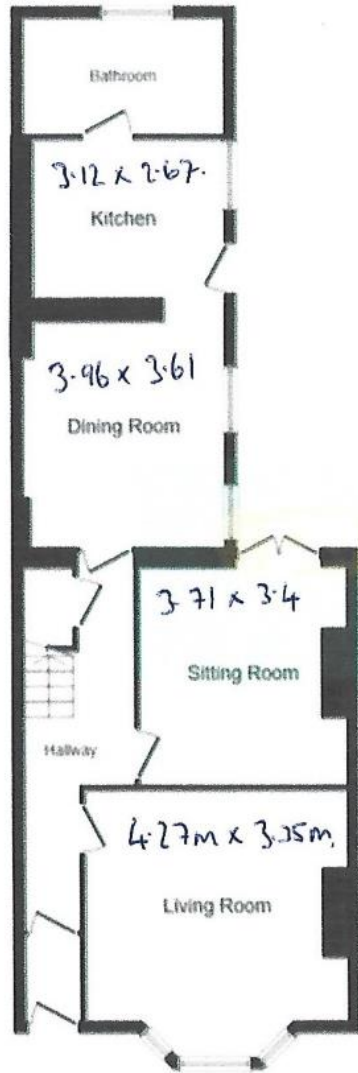
 Bin storage of clothes DRYING



161 Neath Road, Briton Ferry, Neath, SA11 2BX



Map area bounded by: 274244,194463 274334,194553. Produced on 17 June 2021 from the OS National Geographic Database. Reproduction in whole or part is prohibited without the prior permission of Ordnance Survey. © Crown copyright 2021. Supplied by UKPlanningMaps.com a licensed OS partner (100054135). Unique plan reference: b90cuk/647718/877509



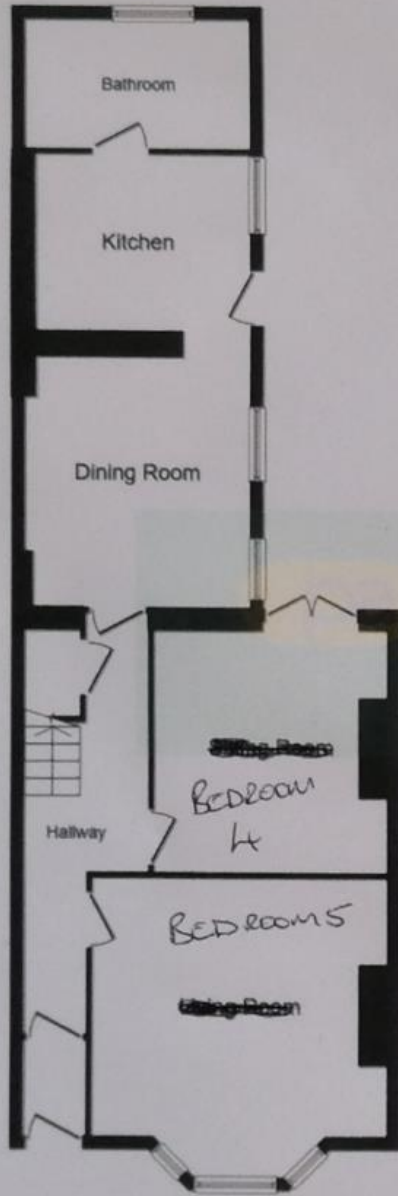
Ground Floor

On Suite in Bedrooms 1, 2 + 3
 Size 1.0 x 2.2m in each room.



First Floor

SCALE 1:100.



Ground Floor



First Floor



Domino's

20

CLICK AND COLLECT
ORDER ONLINE
FREE DELIVERY

105



 **Domino's**

DOUBLE CRUST
YEAR REALLY
WUNGY FOR CHICKEN!

CLICK AND COLLECT
ORDER ONLINE
FOR COLLECTION

FREE

STOP
STOP
STOP











• Turf
• Artificial
• Composite
• Natural
• Patio Slabs
• Timber
www.daviesdiy.com



