

Appendices 1,2,3 & 7

South West Wales

Draft Regional Transport Plan

December 2024

DRAFT



Cyngor Castell-nedd Port Talbot
Neath Port Talbot Council



Parc Cenedlaethol
Arfordir Penfro
Pembrokeshire Coast
National Park



Table of Contents

Contents

1. Foreword	2
2. Introduction	3
Background to the Regional Transport Plan	3
The role of the CJC	4
About our Region	4
3. Where are we now and why things need to change?	6
The current transport network	6
The policy context	7
4. Evidence	22
Social Landscape	22
Economic Indicators	23
Current Transport System	26
Environmental Indicators	29
5. Objective Setting	32
6. The Policies	34
Llwybr Newydd – The Wales Transport Strategy 2021 – Priority 1 Policies	35
Llwybr Newydd – The Wales Transport Strategy 2021 – Priority 2 Policies	39
Llwybr Newydd – The Wales Transport Strategy 2021 – Priority 3 Policies	49
7. Introduction to the RTDP and the assessment of schemes	53
Scheme Assessment	53
Delivery	53
8. The RTDP priorities	55
9. Assessment of the RTP	57
Statutory Assessment	57
Monitoring the RTP	58
Appendix 1 – Glossary	59
Appendix 2 – Engagement Plan	60
Appendix 3 – Stakeholder Engagement Outcomes	62
Appendix 4 – Accessibility Analysis	69
Appendix 5 – Prioritisation Tool Details	70
Appendix 6 – Integrated Wellbeing Assessment and Strategic Environmental Assessment Scoping Report	71
Appendix 7 – Draft RTDP	75

1. Foreword

The Regional Transport Plan for South West Wales sets out a plan for transport in the region that supports economic growth, encourages modal shift away from private car use, and reduces the negative environmental impact of our transport network.

The South West Wales Corporate Joint Committee (SWWCJC) is committed to implement improvements so that buses and trains are available to offer a more practical solution than travelling by car, as this is a transport priority in South West Wales.

That transport options to be explored include rural and urban areas with improved connection between different transport services.

In addition, the strategies for the maintenance of roads, footpaths and cycleways are reviewed for planned and preventative maintenance within the South West Wales region.

Over 70% of people who took part in recent consultation picked such improvements as the most important that could be introduced to make transport better across Carmarthenshire, Neath Port Talbot, Pembrokeshire and Swansea.

More than 800 people took part in the consultation on the case for change for a regional transport plan, which was run by the South West Wales Corporate Joint Committee (SWWCJC).

Cllr Rob Stewart, Swansea Council Leader and Chair for South West Wales Corporate Joint Committee (SWWCJC), said: “We know transport improvements are needed across South West Wales for the benefit of our residents and businesses and to help attract more jobs and investment to the area.

“People’s views on what should be prioritised in future are crucially important though, so we’d like to thank everyone who took part in the recent consultation.

Cllr Darren Price, Carmarthenshire Council Leader and Chairman of the South West Wales Corporate Joint Committee Transport sub-committee, said: “We need a transport system in South West Wales that meets the needs of modern times while better connecting our communities.

“This is important because transport affects each and every one of us – whether you’re a motorist, a bus or train user, or someone who walks or cycles to get from one place to another.



2. Introduction

The background to the Regional Transport Plan

To aid the reader, a glossary of acronyms and terms used in the draft RTP is at Appendix 1.

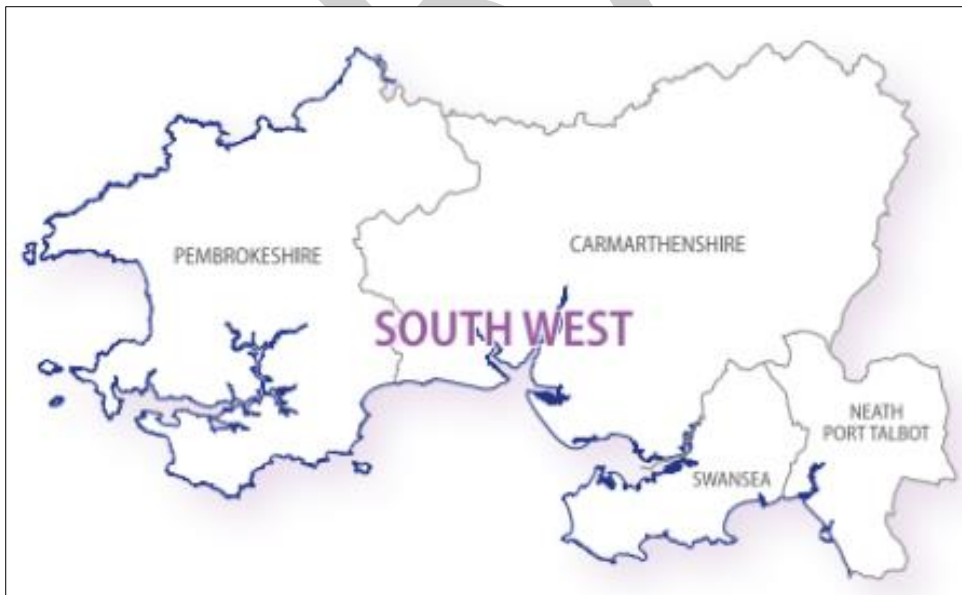
The Regional Transport Plan for South West Wales (“the RTP”) sets out our ambition for transport across the region. The region comprises the geographic areas of

- Carmarthenshire County Council
- Neath Port Talbot Borough Council
- Pembrokeshire County Council
- Swansea City and County Council.

The RTP builds upon the Case for Change that the region developed in early 2024. The Case for Change sets out the principal reasoning behind the RTP and demonstrates why our transport network will need to evolve and adapt to new challenges and ways of working.

The RTP is supported by a Regional Transport Delivery Plan (RTDP) which sets the initiatives and schemes that are proposed to support delivery of the RTP in the timeframe 2025 to 2030.

Figure 1. The South West Wales Region



The RTP has been developed to ensure that the region has the transport network that it desires.

The RTP is a statutory document produced by the Corporate Joint Committee for South West Wales.

The transport network is at the heart of the region; enabling residents and visitors to travel to work, access essential services, receive education and undertake leisure activities across South West Wales and further afield. The RTP sets out the policies and strategies for transport regionally starting in 2025. Transport is a cross-cutting theme and has the potential to influence and be influenced by a variety of policy areas. The context for the development of the RTP has therefore drawn on evidence from a wide range of documents to ensure that the strategies and policies contained within this Plan are consistent with and support a number of wider aims and objectives.

The formal Welsh Government guidance for the development of RTP sets out that the *“RTP sets the policies for implementing Llwybr Newydd at a regional level”*. The policy of Llwybr Newydd is based upon a vision for an accessible, sustainable, and efficient transport system across all of Wales. The RTP is therefore designed primarily to bring a regional focus to the delivery of the Wales Transport Strategy, Llwybr Newydd, 2021.

Formally constituted in January 2022, the Corporate Joint Committee for South West Wales covers the local authority areas of:

- Carmarthenshire,
- Neath Port Talbot,
- Pembrokeshire and
- Swansea.

The Committee will improve the regional planning, co-ordination and delivery of transport, land use planning, economic development and energy.

The Committee is made up of representation from Carmarthenshire Council, Neath Port Talbot Council, Pembrokeshire Council and Swansea Council, as well as the Brecon Beacons National Park Authority and the Pembrokeshire Coast National Park Authority.

The Corporate Joint Committee has been created by the Local Government and Elections (Wales) Act 2021.

About our region

The South West Wales region covers an area of circa 5,170 square kilometres (1995 square miles). It is home to around 700,000 people and accommodates some 270,000 jobs. This represents 22% of the population and 23% of Wales's landmass.

The context is set locally by Swansea Bay City Deal, a £1.3 billion investment in the region's economy and social infrastructure and by the aspiration shown by the region's local authorities. It is essential that complementary private investment is attracted to the region at a faster rate to ensure we have the economic activity and infrastructure to achieve great things.

The region also has a series of vital public services such as hospitals, local healthcare facilities, schools, colleges, universities together with retail sites, leisure facilities and employment sites that need to be accessed. City and town centres are vital hubs in the transport network and the communities that they serve.

The transport system doesn't operate in isolation. It is driven by the land-use and environmental choices faced and the level of economic activity. It is also shaped by the communities of the region; with need and aspiration for transport determining the level of use now and into the future. The system will need to meet these changing requirements and give the region the capability to reach its potential whether individually or as a wider community.

Nationally, Llywyr Newydd: the Wales Transport Strategy (2021) sets a new direction for transport in terms of both services and infrastructure, and in terms of the movement of people and goods. Llywyr Newydd sets out that in the changing world that surrounds the transport system that it must be accessible, sustainable and efficient. Llywyr Newydd is designed to shape a transport system that is good for people and communities, good for the environment, good for the economy and places and supports a thriving Welsh language and culture. It should also ensure that the transport legacy left for future generations is tangible and capable of continued operation. To shape the RTP the region has developed a vision that translates Llywyr Newydd; The Wales Transport Strategy (2021) into region specific objectives to give shape to the RTP policy framework.

The development of these objectives is discussed in section 4.

3. Where we are now and why the transport system needs to change

The current transport network

The current transport network provides links across the South West Wales region and into the South East Wales region, and Mid Wales region. It also provides connectivity at a local level to essential services and facilities. The current network is based on a spine of railways and trunk roads that provide long distance transport, and local travel between and to key centres.

Passenger railway lines

- Cardiff to Swansea – (South Wales Main Line) unelectrified
- Swansea to Fishguard - unelectrified mainline with branches as follows:
 - Llanelli to Shrewsbury
 - Whitland to Pembroke Dock
 - Clarbston Road to Milford Haven

Non passenger railway lines

- Swansea District Line – Neath to Llanelli
- Swansea Burrows to Onllwyn and Blaengwrach (line to Onllwyn to serve a new rail testing and train development facility)
- Pantyffynnon to Gwaun-Cae-Gurwen

Trunk roads

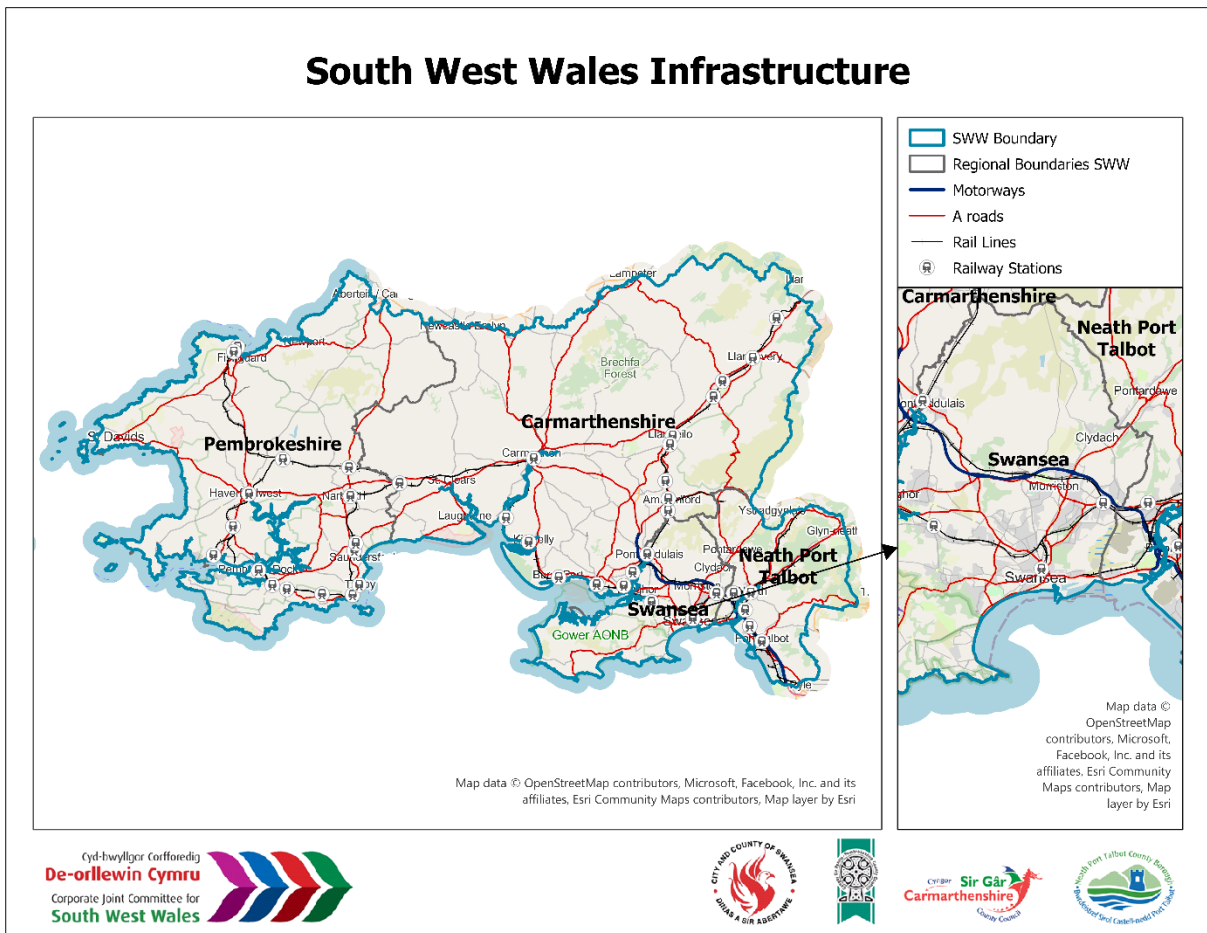
- M4
- A465
- A48
- A483
- A40
- A4076
- A477
- A487

It is recognised that the Region's rail and trunk road networks play a significant role in transport provision. Going forward, continued improvements in rail and trunk road networks will be required to support the overall success of the RTP in terms of its wider ambitions to achieve sustainable economic growth, support net zero targets, and ensure social equality and access to opportunity.

In addition to these major links, the region has a full network of local roads that serve individual communities and a comprehensive network of public rights of way.

Although the current network is comprehensive additional facilities will be required to support economic growth, to facilitate de-carbonisation and respond to the changing population and its needs.

Figure 2. South West Wales Transport Network



The Policy Context

Transport Specific Policies

Llwybr Newydd; The Wales Transport Strategy (2021)

The Wales Transport Strategy (2021) ('the WTS') sets the framework at a national level to ensure Wales has an accessible, sustainable and efficient transport system. In the WTS context the strategy sets three key priorities and outlines four main objectives to be:

- Good for people and communities
- Good for the environment
- Good for the economy and places in Wales
- Good for culture and the Welsh language

The RTP is required to support the delivery of the WTS at a regional level. The objectives developed are designed to support this aim and the region's aim for greater levels of economic activity, environmental improvement, proactive development of tourism and meeting the needs of the region's rural communities.

National Transport Delivery Plan 2022 to 2027

The Wales National Transport Delivery Plan (NTDP) sets out what Welsh Government and its agencies will deliver against the priorities and ambitions set out in Llwybr Newydd – The Wales Transport Strategy (2021) (WTS). The NTDP includes the programmes, projects and new policy programmes that the Welsh Government has ambition to be delivered before 2027. The NTDP records how the WTS social, economic, environmental and cultural objectives can be delivered. The NTDP has cross-reaching implications at a national level for the Programme for Government, Net Zero Wales and links to other government policies such as regeneration and tackling poverty.

At the regional level, it should be noted that a total of four RTP's across Wales will be a key factor in the framing of the next NTDP due to cover the period beyond 2027.

Guidance for Regional Transport Planning (2024)

The Welsh Governments Sustainable Transport in Rural Areas (2024) provides guidance for local authorities, CJC's and other organisations involved in improving rural transport. The document provides guidance on improving access for rural communities to sustainable and accessible modes of transport, which will help residents in rural areas access employment, education, leisure, and other key services. It provides case study examples from other countries and examples of projects that are being delivered and are planned in rural Wales.

Llwybr Newydd; The Wales Transport Strategy (2021)

Produced by Welsh Government and Transport for Wales to outline the proposed approach to bus franchising, it sets out the case for bus reform and future plans for the bus network. The aim is for buses to be more reliable, affordable, flexible and easy to use.

The Wales Transport Strategy (2021) ('the WTS') sets the framework at a national level to ensure Wales has an accessible, sustainable and efficient transport system. In the WTS context the strategy sets three key priorities and outlines four main objectives to be: services. New Welsh Government legislation is required to achieve the roadmap's outcomes. This is anticipated with in the RTP period.

The RTP is required to support the delivery of the WTS at a regional level. The objectives developed are designed to support this aim and the region's aim for greater levels of economic activity, environmental improvement, proactive development of tourism and meeting the needs of the region's rural communities.

The Wales National Transport Delivery Plan (NTDP) sets out what Welsh Government and its agencies will deliver against the priorities and ambitions set out in Llwybr Newydd – The Wales Transport Strategy (2021) (WTS). The NTDP includes the programmes, projects and new policy programmes that the Welsh Government has ambition to be delivered before 2027. The NTDP records how the WTS social, economic, environmental and cultural objectives can be delivered.

The NTDP has cross-reaching implications at a national level for the Programme for Government, Net Zero Wales and links to other government policies such as regeneration and tackling poverty.

At a local level the RTP will need to build upon the priorities for investment set out in the Regional Transport Delivery Plan (RTDP). Additionally, it should be noted that a total of four RTP's across Wales will be a key factor in the framing of the next NTDP due to cover the period beyond 2027.

The Welsh Government published Net Zero Wales Carbon Budget 2 (2021-25) on 28 October 2021. It sets out how Wales will meet its second carbon budget (CB2), and builds the foundations for Carbon Budget 3 (CB3) and the 2030 emissions reduction target, as well as net zero by 2050.

The net zero plan proposes to reduce emissions from passenger transport by 22% by 2025 (from 2019) and 98% by 2050 through demand reduction, modal shift and the uptake of low carbon technologies. The plan also proposes a reduction in car miles travelled per person by 10% by 2030 and an increase in the proportion of trips by sustainable travel modes (public transport and active travel) to 35% by 2025 and 39% by 2030.

The RTP reflects the requirements of the 2030 target in its policy making and scheme selection.

Town Centre First

The Welsh Governments Sustainable Transport in Rural Areas (2024) provides guidance for local authorities, CJC's and other organisations involved in improving rural transport. The document provides guidance on improving access for rural communities to sustainable and accessible modes of transport, which will help residents in rural areas access employment, education, leisure, and other key services. It provides case study examples from other countries and examples of projects that are being delivered and are planned in rural Wales.

Clean Air Plan for Wales: Healthy Air, Healthy Wales

Produced by Welsh Government and Transport for Wales to outline the proposed approach to bus franchising, it sets out the case for bus reform and future plans for the bus network. The aim is for buses to be more reliable, affordable, flexible and easy to use.

The document has been used to assist in developing the RTP's approach to bus services. New Welsh Government legislation is required to achieve the roadmap's outcomes. This is anticipated within the RTP period.

Bws Cymru: Connecting People with Places (2022)

Bws Cymru sets out the Welsh Government's plans for improving bus services across Wales including the actions that the Welsh Government itself will deliver. It sets out a vision for 'a stable and coherent network of bus services that are fully integrated with other modes of public transport, which are reliable, affordable,

flexible, easy to use, low-carbon and that encourage more people to use the bus, rather than their cars.'

Regional and local polices

Each local authority in South West Wales has a mix of individual and shared policies. These policies are complemented by strategies and studies which inform key decisions, investment and developments across the region.

The four existing Local Transport Plans

Within South West Wales, much work has been undertaken in recent years to develop a shared transport vision and opportunities for the region, through the implementation of the **Joint Transport Plan for South West Wales (2015-2020)** - 'the JTPSWW'.

The plan sets out a strategic framework for improvements to local transport, connectivity and access through the plan period 2015-2020, together with longer term aspirations. The JTPSWW will be replaced by this Regional Transport Plan.

Each local authority in the South West Wales region has developed and implemented a great number of schemes as a result of their inclusion in the Joint Transport Plan.

The four Council strategic plans

Setting out the direction of each local authority over a five-year period are the Local Authority's Corporate Plans / Strategies which incorporate improvements and well-being objectives as defined in legislation, and the services provided to meet these aims, in line with each respective authority's core values / key priorities over the short and medium term.

Under the Well-being of Future Generations Act, the Council is required to produce well-being objectives to demonstrate the contribution the local authority will make towards the national well-being goals for Wales. The objectives are important, as they provide the framework for all the work the local authority does.

- Swansea – Corporate Plan (2023-2028)
- NPT – Corporate Plan (2024-2027)
- Pembrokeshire – Corporate Strategy (2023-2028)
- Carmarthenshire – Corporate Strategy (2022-27)

South West Wales Corporate Plan 2023-2028

The Corporate Plan for South West Wales Corporate Joint Committee includes the regions vision for 'South West Wales 2035', the well-being objectives, equality objective and Biodiversity Duty Plan.

Key objectives are: -

- To collaboratively deliver the Regional Economic Delivery Plan and Regional Energy Strategy thereby improving the decarbonised economic well-being of South West Wales for our future generations.
- To produce a Regional Transport Plan for South West Wales that is founded on collaboration and enables the delivery of a transport system which is good for our current and future generations of people and communities, good for our environment and good for our economy and places (rural and urban).
- To produce a sound, deliverable, co-ordinated and locally distinctive Strategic Development Plan for South West Wales which is founded on stakeholder engagement and collaboration, and which clearly sets out the scale and location of future growth for our future generations.

Each local authority in South West Wales has a mix of individual and shared policies. These policies are complemented by strategies and studies which inform key decisions, investment and developments across the region.

The previous RTP (dated from 2015)

Within South West Wales, much work has been undertaken in recent years to develop a shared transport vision and opportunities for the region, through the implementation of the **Joint Transport Plan for South West Wales (2015-2020)** - 'the JTPSWW'.

The plan sets out a strategic framework for improvements to local transport, connectivity and access through the plan period 2015-2020, together with longer term aspirations. The JTPSWW will be replaced by this Regional Transport Plan.

Each local authority in the South West Wales region has developed and implemented a great number of schemes as a result of their inclusion in the Joint Transport Plan.

The revised LDPs will outline each council's proposed direction, for example including:

- The plan's vision.
- Key issues and objectives.
- Preferred level of growth.
- Spatial strategy and a range of strategic policies aimed at implementing the overall strategy.
- Detailed policies.
- Monitoring framework.
- Housing trajectory.
- Proposal and constraints maps; and
- Implementation and delivery plan.

"Future Wales: The National Plan 2040" provides a blueprint for creating the regional Strategic Development Plan (SDP) for South West Wales. This SDP will be developed by a newly formed regional team within the Corporate Joint Committee (CJC). The plan will address issues that extend beyond local authority boundaries and will support the way people live, work, and visit the region. This

includes considerations of working and commuting patterns to key trip attractions and destinations.

South West Wales Regional Economic Delivery Plan

The South West Wales region has a diverse economy and unique set of natural and cultural assets, underpinned by the quality of its coastal and rural environment, industrial heritage and capacity and university presence. In 2014 an Economic Regeneration Strategy was published, setting the strategic groundwork for the Swansea Bay City Deal, a £1.3 billion investment package supported by the UK and Welsh Governments.

In 2020 a **Regional Economic Delivery Plan (REDP)** was commissioned to unlock the region's further potential and to ensure that growth is resilient, sustainable and inclusive. This plan sets out the priorities for intervention and articulating how business, government, education, voluntary, community and social enterprise organisations and other partners should work together to bring them forward.

The key points from the REDP are:

- there are 322,000 jobs in the region
- 40% of jobs in the region are in Swansea (the main commuter destination)
- Swansea Bay and Llanelli is defined in future Wales as a 'National Growth Area' for new jobs and housing
- 20% of national energy supplies enter Britain via Pembrokeshire

Figure 3. Major Concentrations of Employment

Location	Number of jobs
Ammanford	3250
Baglan / Jersey Marine	15000
Carmarthen	14500
Haverfordwest	11300
Llanelli	21800
Milford Haven / Pembroke Dock	8000
Neath	9500
Port Talbot / Margam	19800
Swansea Central	39000
Swansea NW	8000

South West Wales Energy Strategy

To meet the Welsh Governments targets and to be on track for net zero by 2050, the region has a target of a 55% reduction in South West Wales' energy emissions by 2035. The South West Wales Energy Strategy (2022) outlines six priorities to achieve this:

1. Energy efficiency
2. Decarbonise transport
3. Decarbonise heat
4. Regional coordination
5. Smart & flexible systems
6. Electricity generation.

Swansea, Neath Port Talbot, Carmarthenshire and Pembrokeshire each developed a **Local Area Energy Plan (LAEP)** to outline short and long-term routes to achieve a net zero energy system in line with regional targets. The LAEP's identify priority interventions required, on a localised and regional scale.

South West Wales – the need for change

The Case for Change for the RTP is an essential step on the journey to develop the Regional Transport Plan. The case for change was approved by the SWW CJC in February 2024.

The economic profile and industrial mix of South West Wales is diverse. Also, overlaid with the general increase in population is a changing region where the economic opportunity created by the City Deal investments will require a corresponding improvement in mobility.

South West Wales is home to the busy ports of Fishguard and Milford Haven, which brings freight and passenger traffic flows across the region. The predominant flow of road-based freight within the region is east-west, along the A40 / M4 corridor. Port Talbot is home to the UK's only existing raw steel production site which is receiving a £1 billion+ investment in green electrically

powered furnaces which will use scrap steel as a raw material as opposed to iron ore. This will trigger major changes in working practices and a lowering of staff levels in the short to medium term together with changed flows of raw materials to the plant.

This industrial legacy is supported by development in the digital and education sectors with two universities, Swansea University and University of Wales Trinity St. David's, and an active City Deal across the region that prioritises the digital economy.

Swansea Bay City Deal

The Swansea Bay City Deal is a nine project £1.3 billion investment in the region with central government, local government and private sector funding. 9 key projects are underway to deliver transformational changes in work, education and skills: -

- Skills and Talent
- Digital Infrastructure
- Canolfan S4C Yr Egin
- Swansea City and Waterfront Digital District
- Homes as Power Stations
- Pembroke Dock Marine
- Life Sciences, Wellbeing and Sports Campuses
- Pentre Awel
- Supporting Innovation and Low Carbon Growth

The 9,000 new jobs that are planned within these projects will need to be accommodated on the region's transport system.

Port Talbot Steel Works

The steelworks is currently a major employer in the region with circa 3,500 people employed directly within the steelworks and a supporting supply chain. The steelworks has recently closed its last blast furnace and is about to commence on a major rebuilding programme of new low carbon electric arc furnaces; these will require lower staffing levels and change the flows of raw materials to the plant. A £500m package to support the transition to low carbon steel making has been agreed with the UK government and a £100m response package to mitigate the effects on workers, their families and businesses. A long-term economic strategy for the area will also be developed between Neath Port Talbot Council, Governments and public and private partners.

The Celtic Freeport

The Celtic Freeport is dedicated to industrial renewal, by attracting investment and innovation into Wales and supporting existing industries accelerate and transition to a green economy. It builds upon the ambition of the Haven Waterway Enterprise Zone which provides a planned reinvention of the Milford Haven area with new diverse initiatives focused on renewable energy, tourism and the digital economy.

Through inclusive partnership, which aims to empower local communities and build a resilient economic future for Wales, it is expected that the Celtic Freeport will generate up to 16,000 new jobs between Pembrokeshire and Neath Port Talbot, by driving investment into deprived communities, boosting economic activity and promoting growth in the area.

The Freeport will accelerate the roll-out of floating offshore wind (FLOW), hydrogen economy, marine energy and sustainable fuel production through substantial investment in port infrastructure at Pembroke Port and Port Talbot and through the delivery of a future green skills and innovation pathway for young people.

The transport system

The current transport system is predominantly road based. This is perhaps understandable given historic circumstances and approaches to transport planning followed in the past. Given the need to change how travel occurs and the need to manage the impact of transport, the RTP follows the lead of Llwybr Newydd in seeking to make active travel and public transport valid alternatives to private transportation. This will require an evolving transport network with key investments being identified. To shape this, a new RTP is essential to setting the policy framework and highlighting major investment proposals.

Given the mixed urban and rural nature of the region, a series of solutions tailored to the varied socio-economic circumstances across the region are going to be required to be developed in the RTP.

Currently, maximum use is not made of the existing railway infrastructure in the region. A number of freight-only lines exist that could support investment to accommodate passenger services as the need for heavy freight movements has reduced.

The evidence from rail industry rail use data indicates that the top 12 rail flows from Swansea station are to out of area destinations which is highly significant. This means economic activity is being lost to the region and exported to adjacent areas. The Office of Road and Rail (ORR) data from 2023/24 also shows that the local rail offer is limited in terms of passenger numbers. Implicitly, this is due to the low frequency of services and low line speeds. The Cardiff to Swansea electrification scheme has not been delivered to support the region's main inter-city rail link although new additional 'open access' services between Carmarthen and London have been approved for introduction in the RTP period.

The development of the rail elements of the South West Wales Metro provides a suitable framework to develop and seek funding for these proposals. It is anticipated that the Metro network concept is extended to bus improvements in the network where the development of existing or new rail links are not feasible. This will require changes to the current governance and funding approaches for bus.

HGVs play a significant role in the region, serving the ports, major industry and providing local deliveries. HGV movements are predominantly concentrated on

the trunk road network but with notable flows on major local roads. Whilst HGV traffic is and will remain essential the management of HGV routing and stopping places is a matter for the RTP to influence.

Developing a mode hierarchy that proactively pursues sustainable transport choices wherever feasible is necessary for the region to meet its obligations on climate change and to ensure that economic development can occur, without resourcing significant highway changes. The RTP identifies the scope of this ambition and the detail of how it will be delivered and funded. Equally importantly, the RTP considers at a strategic level how the existing road network and any additions necessary will be managed and maintained.

The Environment

The region is host to two national parks, Bannau Brycheiniog National Park and Pembrokeshire Coast National Park, and Gower Area of Outstanding Natural Beauty (AONB) which provide unique landscapes and an environment that requires special protection. The transport system faces two main challenges in ensuring this level of protection is reflected in the transport network:

- (i) to enable access to the national parks and AONB so their beauty and environment can be enjoyed and
- (ii) ensure that the effects of transport provision on the precious environment is minimised.

This will require rethinking our approach to access and how transport interacts with the landscape across the national park areas

There are seven Air Quality Management Areas (AQMAs) in force across the region. Although the AQMA designations are pollutant based, transport has played a role in the need for the AQMAs. At an 'on the ground level', speed limits have been lowered on sections of the M4 to meet air quality requirements. Unless efforts to decarbonise are embedded in the RTP, further such changes could be necessary but damaging to journey times.

The RTP will need to develop further investment in EV capability, which will involve setting charging requirements for new developments and working with grid suppliers and DNOs, to ensure power is available where needed. EVs cannot not solve directly all the negative carbon impacts of travel but do provide a degree of short-term relief from the adverse outcomes. In the longer term, reducing the volume of private transportation will be central to ensuring that national climate change goals are met; the RTP is an essential early step on this journey.

Rural need

South West Wales is home to many sparsely populated, rural and semi-rural areas, and consideration of the travel needs of people living in those areas is an essential RTP theme. Journey times by public transport are often uncompetitive with cars, particularly in locations away from the main inter-urban corridors. Low bus frequencies are a barrier to people regularly using public transport and encourage car ownership and a higher level of use due to the car's perceived, and in many cases real, greater availability and convenience. Whilst few bus services

operate, Demand Responsive Transport (DRT) bus services have shown that low density populations can successfully be accessible by public transport if the funding and delivery structures are in place. South West Wales retains a number of rural and 'town' railway stations but again service frequencies are low, car access is often required to the stations and access can be difficult for cyclists, walkers and public transport users.

Servicing, Freight and the Ports

The movement of freight through the region is a lifeline for the region's economy. It does however come with some challenges. Traffic to the ports passes through the region and gives little benefit to the local community and economy enroute. The jobs and activity created at the ports themselves are a cornerstone of the region's economy, in the challenge of how we make access to the ports as effective as possible whilst also capturing value for the community from these important facilities is another key RTP theme.

Rail freight across the region is limited, with flows to Roberson Refinery, Port Talbot steelworks and the Trostre Tinsplate works still timetabled. The creation of a new railway test track at Onllwyn, within Neath Port Talbot and Powys, provides an opportunity for more rail supply industry activity in the region, especially with the forthcoming Celtic Freeport and the additional need for freight movement.

Local deliveries create challenges in the rural context with large vans delivering small items over large areas and with the sheer volume of deliveries in urban areas. The movement of HGVs through the region creates a tension between local amenities and business requirements. Change will need to come in the form of effective routing, suitable facilities for HGV parking and locking into ways to decarbonise HGV use.

Land Use Planning

The CJC are responsible for strategic development planning, regional transport planning and promoting the economic well-being of the region. The CJC has the mandate to develop a Strategic Development Plan (SDP) for the region. This brings an opportunity to fully integrate land use choices together with transport planning and transport delivery at a regional level. The CJC has a lead role in cross-regional transport planning to ensure that cross-boundary links are strengthened in the context of a developing and changing region. Therefore, the new RTP will aid in making sustainable development decisions and provide a framework for transportation to support regional land use planning.

The risk of not changing our approach to transport provision

The key risks of not changing to a fresh approach to transport provision will be seen in other sectors of the social fabric of the region. Transport is a derived demand which responds to, and can pre-empt, changes in the places where people live and work.

The danger of not having a dynamic and forward looking RTP is that investment in transport across all modes stagnates and decisions in other areas of the region's evolution are taken without a robust and evidenced transport plan and

investment programme in place. At risk are the key goals of sustainable economic growth, an improved environment and a place people wish to live in, visit or simply enjoy.

Initial consultation outcomes

To aid consultation an engagement plan has been developed to support the development of the RTP. This is set out in Appendix 2.

Background to the consultation

During summer 2024 an early stage of public consultation was held to:

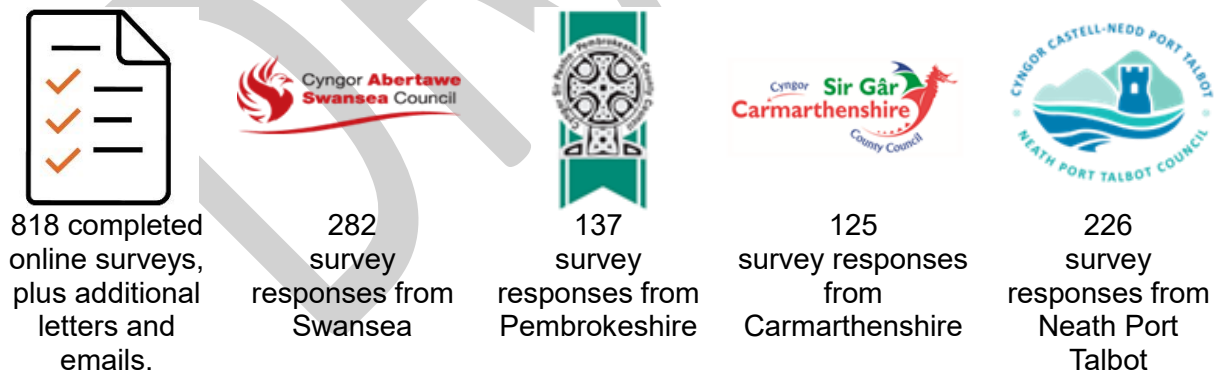
- Let people know that a new RTP is being developed.
- Give people an opportunity to comment on the transport problems they are currently experiencing in the region and on their transport priorities for the future.
- Ensure the new RTP addresses the issues that are of most pressing concern.

This was an informal, non-statutory round of consultation focussed on problems and issues identified in the initial preparatory work for the RTP (called the Case for Change¹). Feedback was gathered via an online survey. The consultation ran for six weeks from Monday 15th July until Monday 26th August 2024.

The response level was good for a survey into region-wide issues with 818 responses received.

Overall Response

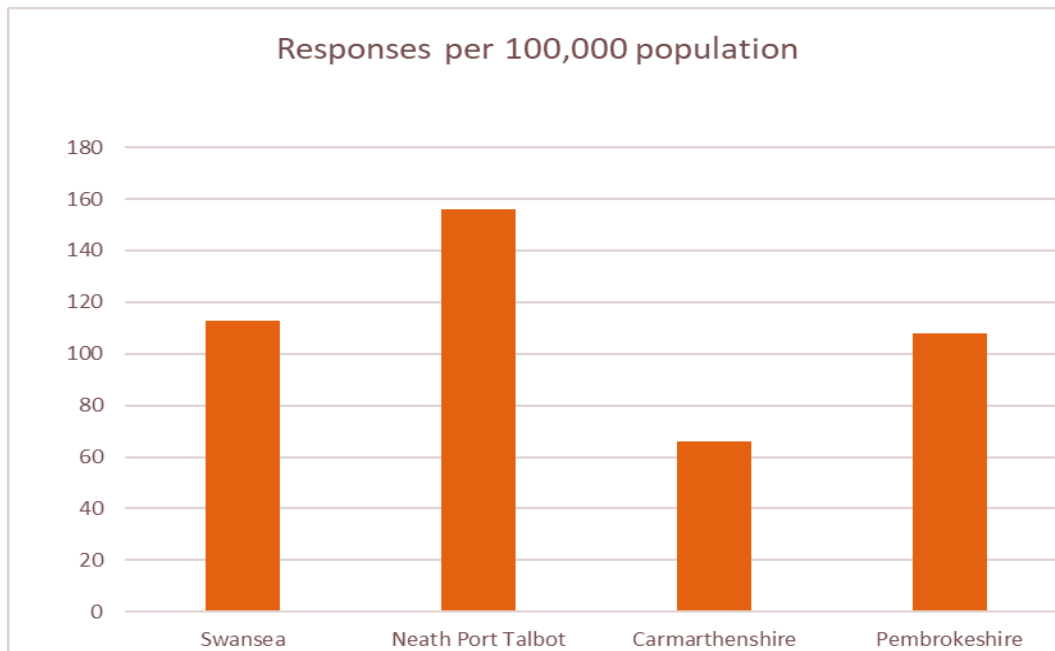
Figure 4. Consultation Response infographic



This was related to the level of population across the region. The response rate in Neath Port Talbot on a population basis was approximately 2.5x that in Carmarthenshire, meaning that in the forthcoming consultation emphasis will need to be given to how engagement is undertaken in more rural communities.

¹ The Case for Change is available here: <http://www.cjcsouthwest.wales/media/19453/case-for-change-accessible-version-english.pdf>

Figure Survey Responses by Council area, per 100,000 people



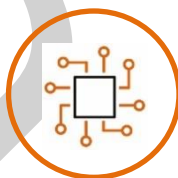
As is often typical with surveys of this nature most respondents were in the 40-74 age bracket (71%). Only 8% of respondents were under 29. For the statutory consultation it will be important to consider how to encourage engagement from younger people

Feedback on problems and issues

The online survey asked respondents to what extent they agreed or disagreed with a list of previously identified problems and issues derived from the Case for Change. Overall, the results showed a high level of agreement with the problems and issues identified, suggesting that the RTP baseline work has correctly identified the key issues.



95% agreed that lack of practical alternatives to the private car in rural areas was an important issue.



92% felt that making trips that involve more than one bus, or a bus and a train, was difficult.



91% agreed that lack of a rail service in some areas was a key issue.



88% expressed concern that journey times by bus take longer than by car or that bus routes don't go where people want them to.



87% noted that walking and cycling is not always practical in some areas or for some people.



86% felt that bus services are infrequent or unreliable.



85% felt that roads, footpaths and cycle tracks are in need of more maintenance.



85% felt it was important new development is supported by good quality transport links and sustainable transport options.

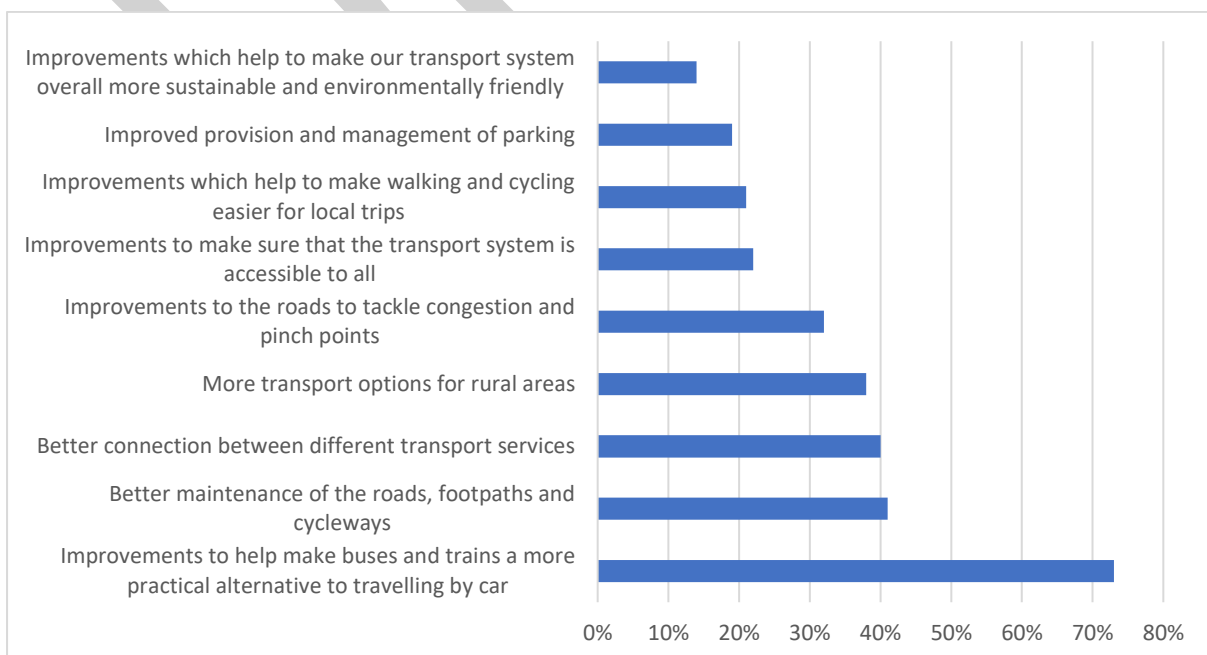
Percentages express the number of people who strongly agreed and agreed to statements in the online survey. The above reflects only the top issues, therefore is only part of the dataset.

In the comments section, key additional problems and issues raised by respondents also included concerns around timetabling of services (in particular a need for more public transport services at weekends and in the evenings); the high cost of public transport; and complexity of ticketing.

Feedback on priorities for the future

The online survey asked respondents to identify their top three transport priorities for the future from a list of nine suggestions. The priorities echoed the problems and issues identified. The graph shows the percentage of respondents who included each priority in their top three. Measures to help make buses and trains a more practical alternative to the car, was the most frequently cited priority.

Figure 5. Future Priorities Responses



In the comments section other important priorities highlighted by respondents were cheaper fares, improved ticketing, overall improved quality of transport services and new/improved/more frequent public transport routes. Whilst respondents supported improvements to walking, cycling and public transport, many also noted that the RTP should recognise that the car remains important for many people and many journeys.

In addition to the public consultation activities a series of engagement sessions with stakeholders on a themed basis were held in mid-2024 to help shape our development of policy and scheme choices for the RTP.

A summary of the outcomes derived from these stakeholder engagement sessions is provided in Appendix 3.

DRAFT

4. The Evidence

The evidence base for the RTP provides a picture of our region that shows the importance of transport to the region and the scale of the challenges we face.

Social Indicators

The population of the region is at the heart of its aspiration. Population levels have direct influence over the ability of the region to grow economically and sets the level of public and other services required. The population level has direct implication for the transport system in terms of the demands placed upon it.

The population

Table 1. Current Population

Location	All ages
Carmarthenshire	190,083
Neath Port Talbot	142,898
Pembrokeshire	125,006
Swansea	246,742
South West Wales	704,729

2023 Mid-Year Population Estimates MYE1 ONS

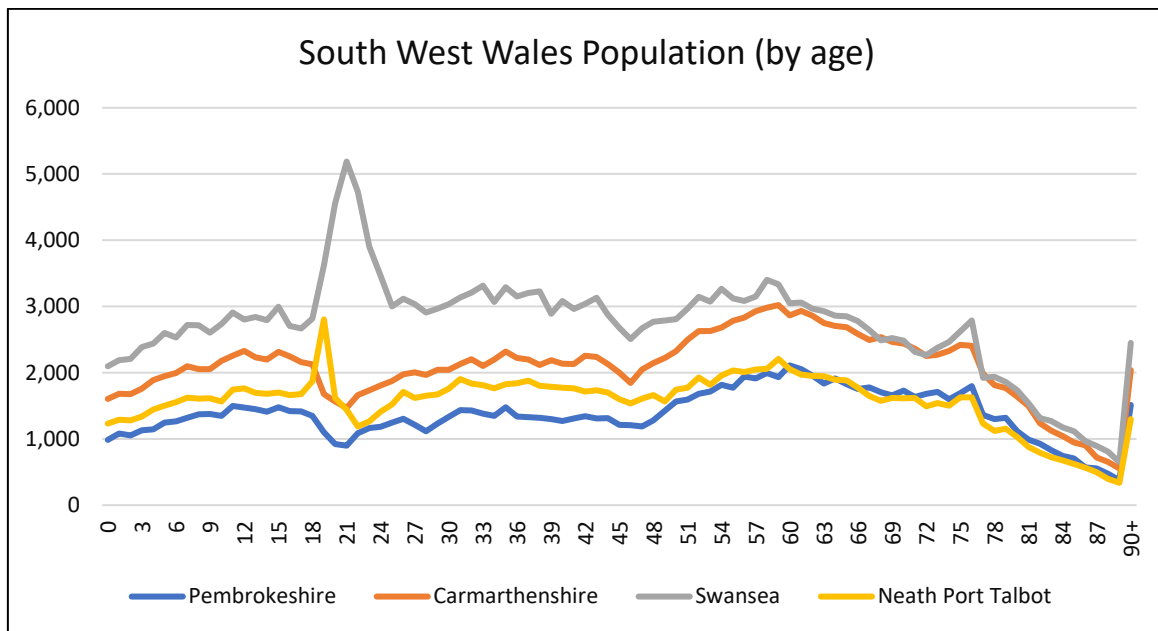
Population projections

The Wales 2018 population projections indicated that in 2023 the region would have had a population of 915,000 people. In reality, based on the 2023 mid-year estimates from the ONS, the region has a population of circa 200,000 less than predicted. Whilst changes in analysis techniques may account for some of this variation the reality is that the lower number suggests a region that needs to become more attractive as a place to live and work.

Table 2. 2018 Welsh Government Population Projections

	2023	2043	Change
Pembrokeshire	126,580	130,196	2.9%
Carmarthenshire	190,022	197,218	3.8%
Swansea	250,004	264,840	5.9%
Neath Port Talbot	144,894	151,889	4.8%
South West Wales	915,005	946,815	3.5%

Figure 6. Population Age Profile



The population age profile is influenced by the presence of students (aged 18 to 22) in Swansea and the notable numbers of people aged 80+. Both these groups will have specific transport needs that the RTP will need to consider.

Economic indicators

The economic profile and industrial mix of South West Wales is diverse. It is home to the busy ports of Milford haven, Port Talbot and Fishguard which brings freight and passenger traffic flows across the region. The predominant flow of road-based freight within the region is east-west, along the A40/M4 from Fishguard in the west to the M4.

The Freeport sites in Milford Haven and Port Talbot will support the continued growth of the freight, logistics and other associated industries in the region. The Freeport is based on the development of a green energy infrastructure supply and support industry using the skill base from the industrial base.

There are several strategic employment sites that act as major employment centres, including Cross Hands and in the Swansea and Neath urban areas. Public transport and active travel options to these employment centres are sometimes inadequate and do not facilitate sustainable commuting. This is, in part, due to how these places have been designed with private vehicles as the main mode of access.

Agriculture remains an important part of the economy in rural areas, which are often less well served by public transport but a sector heavily reliant on HGV access. Many farmers have diversified their business to supplement their income, branching out to provide tourism and visitor services such as accommodation, cafes, farm shops and outdoor activities.

The region has a number of important town centres and 'out of town' locations that are the focus of the region's retail offer. Out of town retail locations in particular

present a number of transport challenges with high levels of car use being the norm. For town centres, retail needs good access and is where public transport can play a strong role as an alternative to car as town centres are where groups of routes meet.

The public sector is a major employer, particularly in the west of the region. For example, the two health boards of Hywel Dda University Health Board and Swansea Bay University Health Board employ circa 27,800 people locally. In the case of Hywel Dda a proposed new community-based delivery approach will bring major changes to the locations where healthcare is provided. Changes in local government service delivery changes will also impact on where and when transport provision may be required.

Tourism is a significant contributor to the regional economy but it also contributes to congestion at weekends and during seasonal peaks.

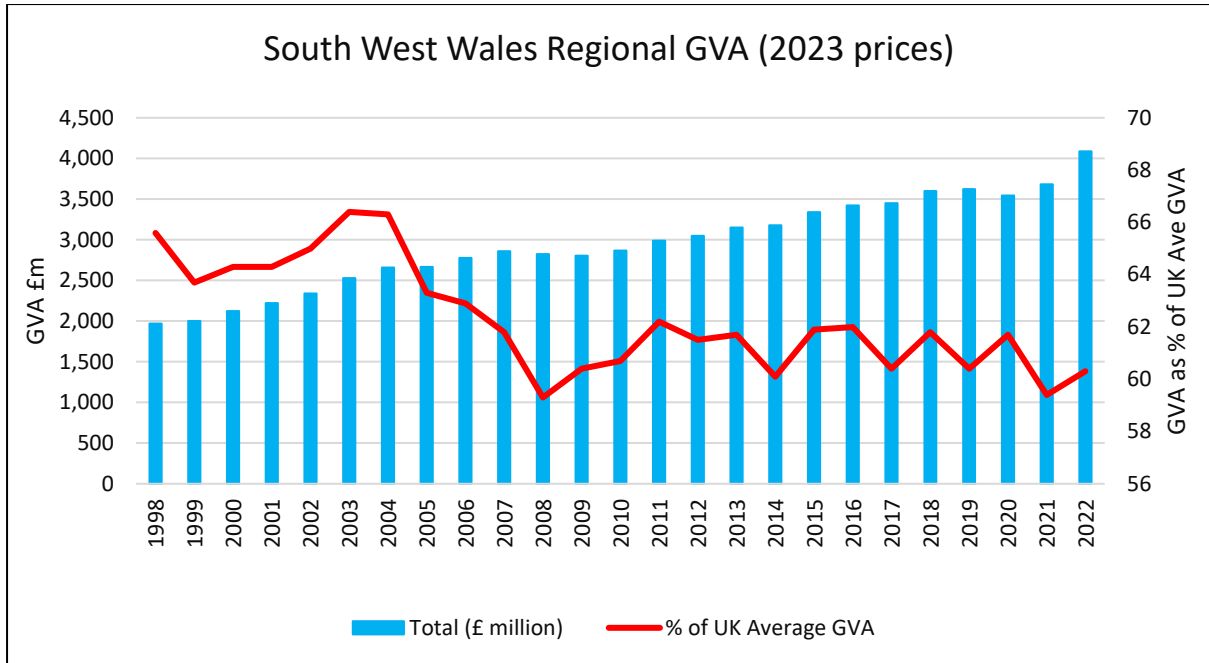
The importance of tourism to the economy is reported for West Wales (and the Valleys) as 5.7% of our Gross Value Added (GVA)². With a regional GVA of circa £19.3billion this suggests that in the region of £1.2billion of GVA is tourism related.

The location of tourism sites and lack of public transport options to travel to and from these locations results in significant reliance on private car travel. Some major attractions also suffer from illegal and inconsiderate parking due to excess demand for limited facilities, impacting local communities.

The region performs poorly against UK indicators; there are economic challenges, such as the impact of seasonal fluctuations in tourism and notable pockets of deprivation and poverty. An effective transport network is essential to economic development and social mobility.

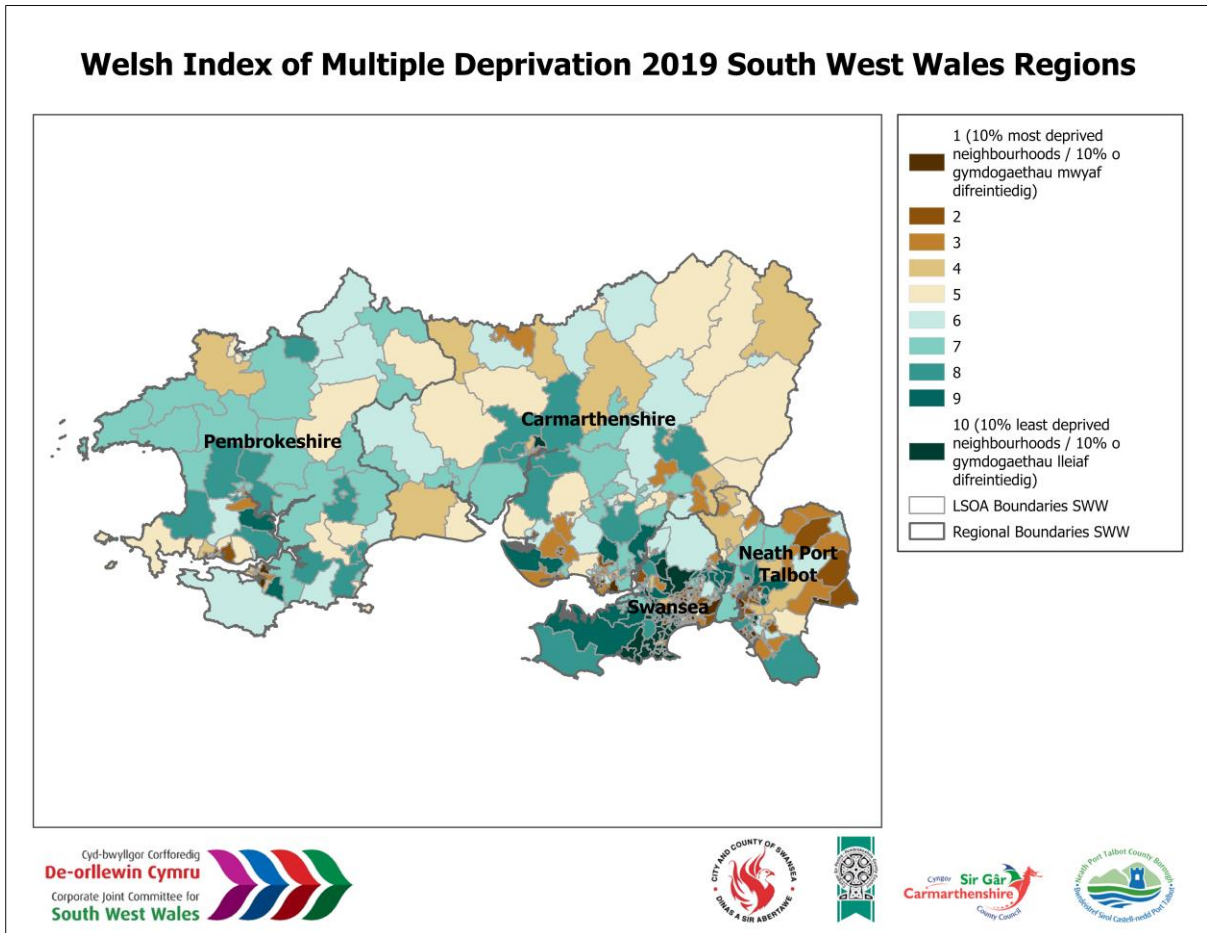
Figure 7. South West Wales: recent economic performance

² <https://business.senedd.wales/documents/s65558/06%20Professor%20Annette%20Pritchard.html?CT=2>



A measure of region’s socio-economic story is provided by the Indices of Multiple Deprivation (IMD) data collected by the Welsh Government. Importantly, IMD is not a direct measure of deprivation but offers a comparison to other similar sized areas across Wales. On that basis the IMD statistics provide a means of helping identify where, and why, to target investment in particular locations.

Figure 8. IMD South West Wales

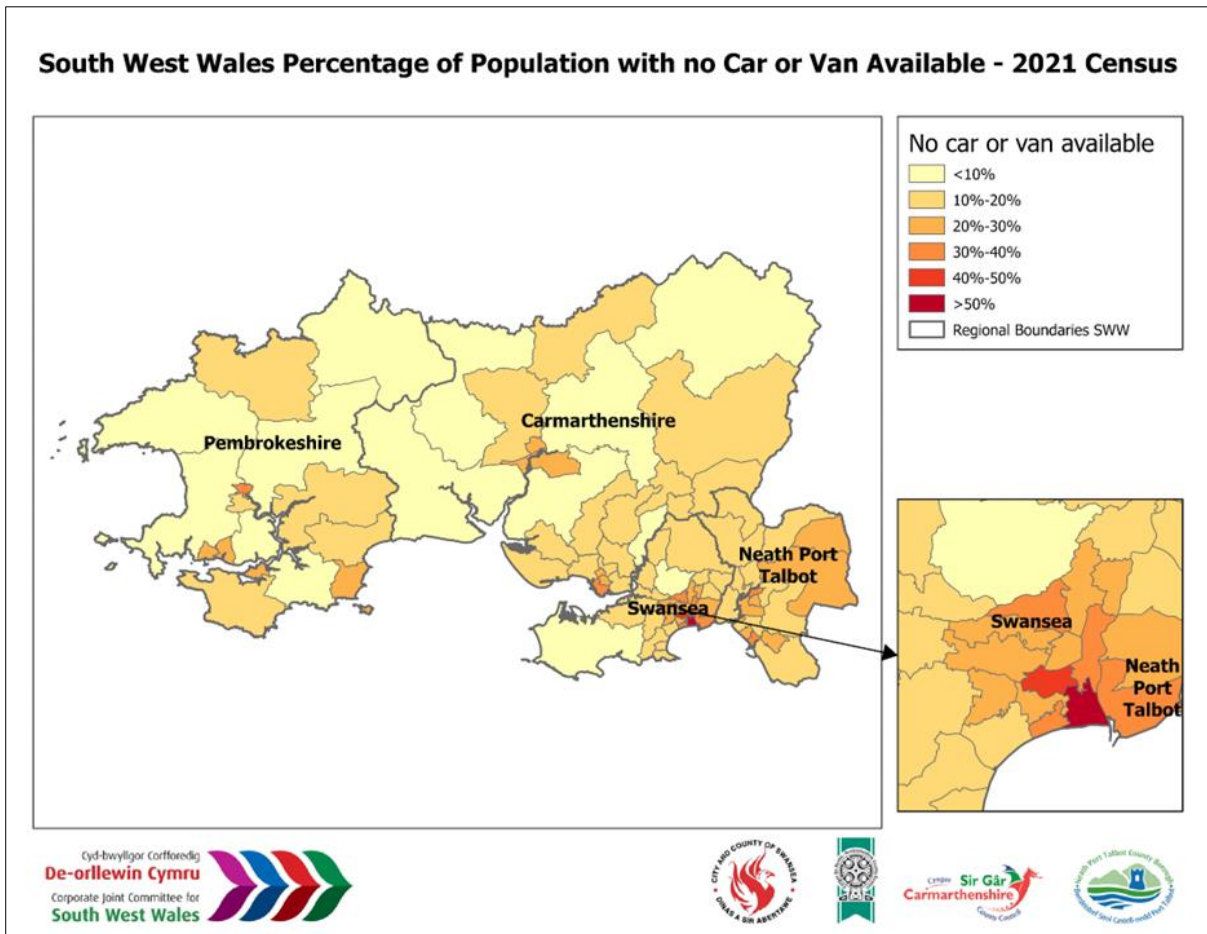


As can be seen, a mix of rural and urban location across the region have high relative values of deprivation. Transport and its availability are cited as reasons for poor IMD outcomes; access to employment, healthcare, education and essential services are all factors that have a transport related component.

The current transport system

The current transport system in the region is heavily car dependant. As noted in why the region needs to change, this level of car-dependency creates its own issues in the region. In urban areas congestion and poor air quality result whilst in rural areas the ownership of a car is often essential.

Figure 9 Car ownership – households with no car or van available



How people travel to work provides a general indication of the modes of travel people use to move around the region.

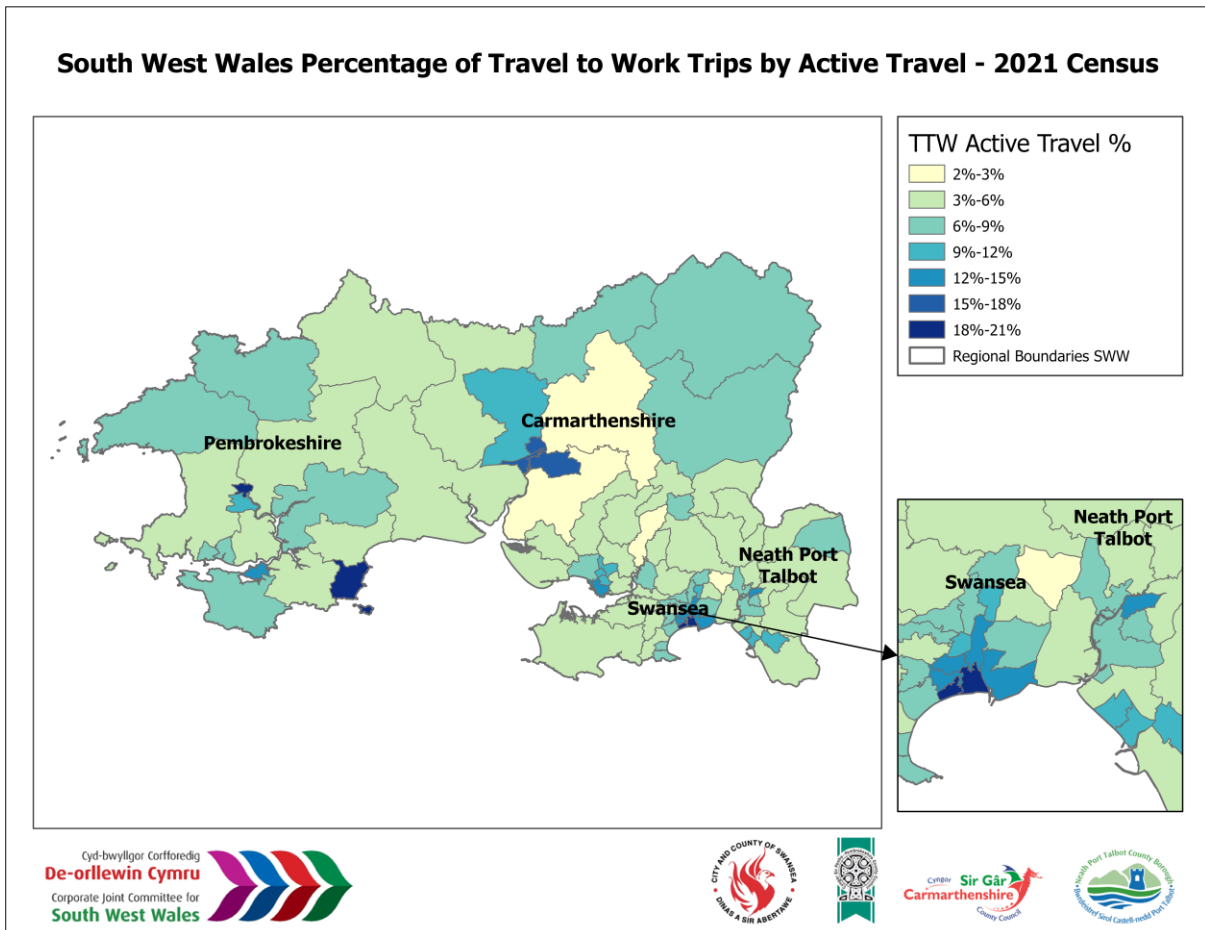
Table 3. Mode of travel to work 2021 census

Method of travel to workplace	Carmarthenshire	Neath Port Talbot	Pembrokeshire	Swansea
Work mainly at or from home	23.5%	21.1%	23.1%	25.4%
Underground, metro, light rail, tram	0.0%	0.0%	0.1%	0.1%
Train	0.4%	0.8%	0.3%	0.4%
Bus, minibus or coach	1.1%	1.6%	1.0%	2.8%
Taxi	0.4%	0.5%	0.4%	0.8%
Motorcycle, scooter or moped	0.3%	0.4%	0.3%	0.3%
Driving a car or van	62.0%	63.1%	61.2%	56.1%
Passenger in a car or van	4.6%	5.2%	4.4%	5.2%
Bicycle	0.6%	0.9%	0.6%	1.1%
On foot	6.3%	5.6%	7.6%	6.9%
Other method of travel to work	0.9%	0.9%	1.0%	0.9%
Total	100.0%	100.0%	100.0%	100.0%

The data also highlights the level of working from home occurring. It is noted that this is reliant to some degree of the level of digital connectivity available across the region.

The mapping of census data to show the propensity to use active travel (walking, wheeling and cycling) at a more detailed level than in the table above for the journey to work is shown below.

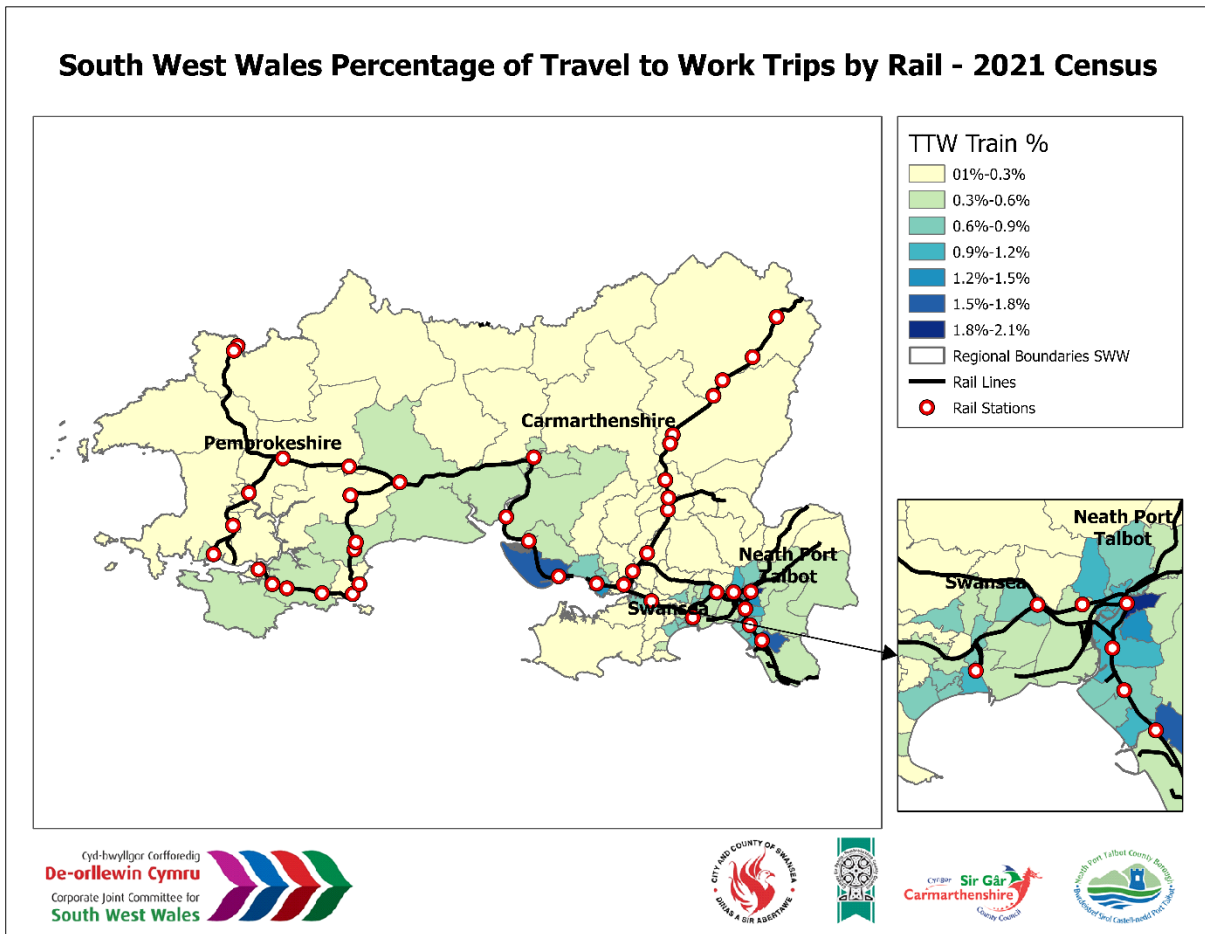
Figure 10. Active Travel: travel to work, 2021 census



As can be seen active travel to work is especially concentrated in the main urban areas of the region. This supports the view that for non-leisure journeys active travel would need to be invested in in rural areas to raise mode share in those locations where this would be possible, even if only for leisure related trips. there. In urban areas, the existing higher level of mode share for active travel provides a positive starting point for investment to balance the needs of active users and cars. However, it must be recognised that given the topography and distance between many rural settlements, investment in sustainable transport cannot be restricted to active travel but must also include investment in bus and rail infrastructure.

A more detailed review of the census shows that rail travel to work is heavily influenced by the frequency of services offered and potentially the ease of access to stations.

Figure 11. Rail travel to work, 2021 census



This shows strong concentrations of rail at locations where service frequencies are high but limited use elsewhere.

Environmental Indicators

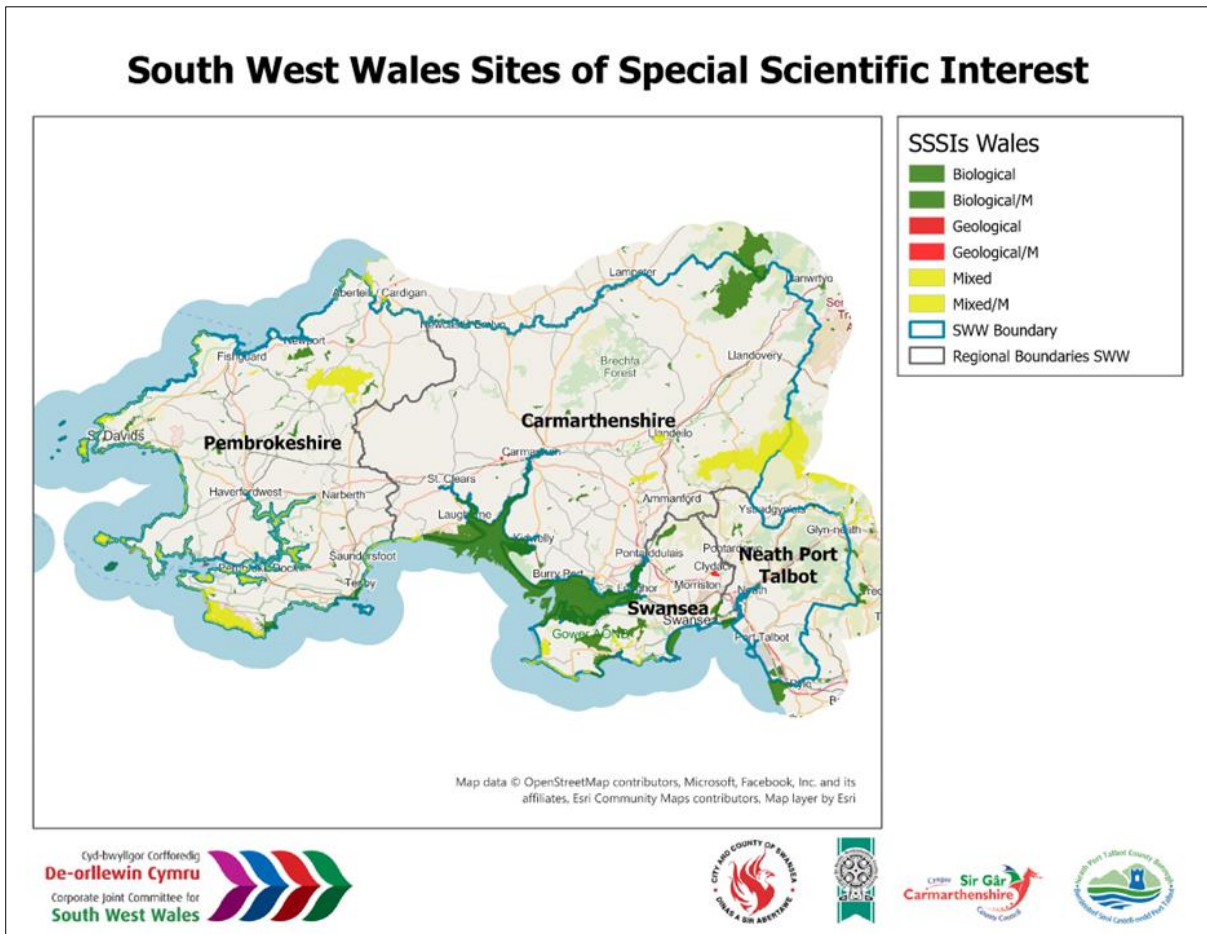
The region is home to two national parks, together with an area of outstanding natural beauty (AONB) in the Gower peninsular and has a number of protected areas that are protected landscapes.

The region has a diverse range of biodiversity, including populations of rare and vulnerable species. We have some wonderful habitats, from coastal sand dunes to ancient woodlands, urban parks to wildflower grasslands.

In 2021 the Welsh Government declared a nature emergency, with 17% of species in Wales at risk of extinction.

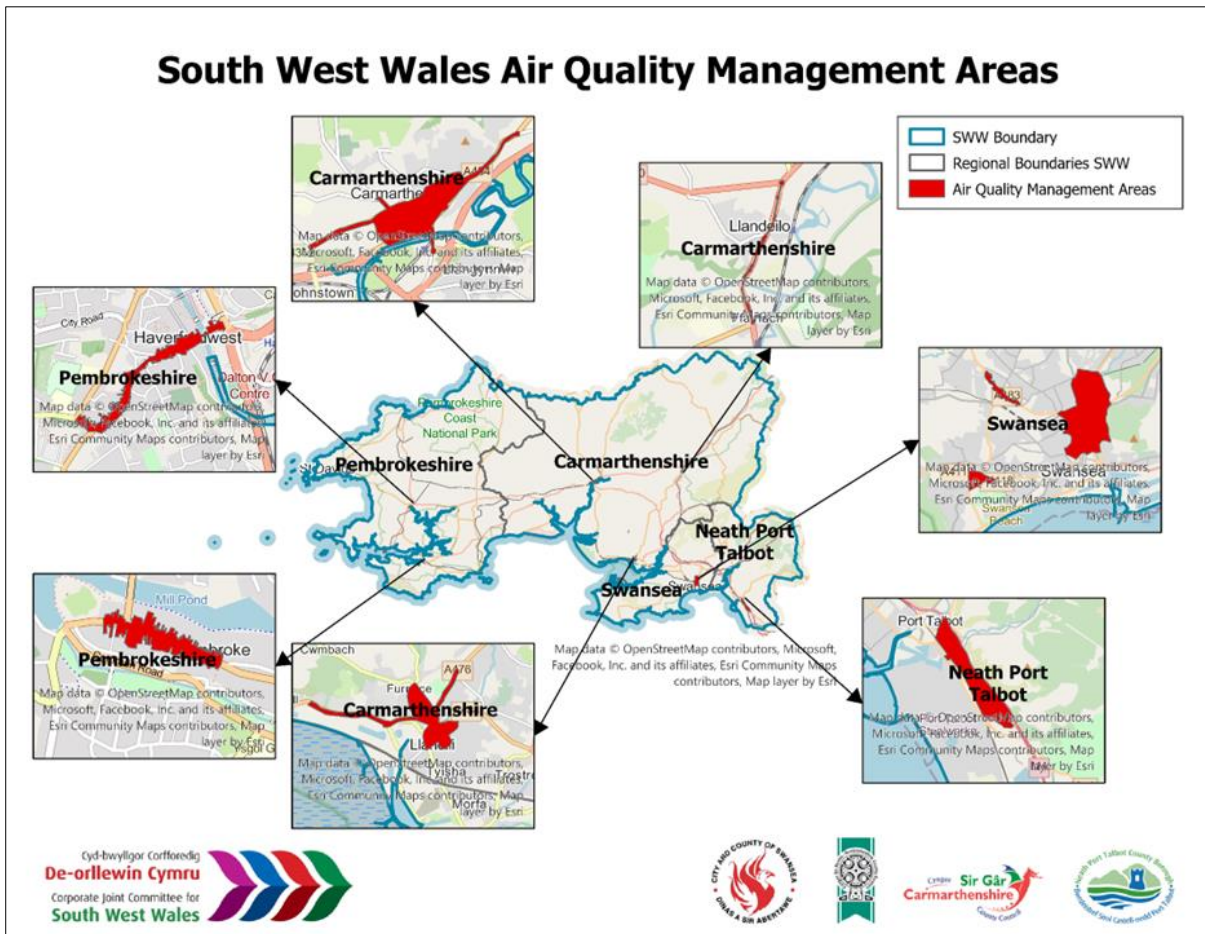
There are a range of thriving habitats throughout the region including a wide spread of sites of special scientific interest (SSSI).

Figure 12. SSSI locations



The region also has seven declared air quality management areas. Of these six are related to transport emissions exceeding national indicators whilst the seventh is related to emissions from the Port Talbot steelworks as operating before the closedown of the blast furnaces in 2024. The Port Talbot AQMA was also a part trigger for the reduction in the M4 speed limit locally to 50mph.

Figure 13. AQMA



Accessibility Analysis

To inform the RTP a detailed accessibility analysis to key locations has been undertaken. Based on the current network and journey times the analysis shows that the region is generally well connected but has notable gaps in the availability of sustainable travel options and the road network in urban areas lacks capacity in some key locations.

A detailed set of accessibility maps is given in Appendix 4 that show the access time by mode to key locations (e.g. town centres, hospitals, rail and bus station and major employment sites) across the region. This highlights a number of locations where access by sustainable means of travel is very limited, or no link is provided.

5. Objective Setting - development of the objectives for the RTP

The RTP is designed to deliver Llwybr Newydd - The Wales Transport Strategy in a regional context and to reflect the region's main priorities.

The region has set itself goals drawn from the following core policies

- South West Wales Economic Delivery Plan (September 2021)
- South West Wales Energy Strategy (March 2022)
- Future Wales – The National Plan 2040 (February 2021)
- Llwybr Newydd - The Wales Transport Strategy 2021 (March 2021)
- Well-being of Future Generations (Wales) Act 2015

The objectives also recognise the region's main transport topics that are described in the "why change ?" element of the draft RTP (section 2).

The RTP objectives

Llwybr Newydd has three overarching priorities to drive and inform the vision for the RTP. Within these priorities the region has identified several objectives that will help implement Llwybr Newydd on a regional scale. The table below shows Llwybr Newydd priorities and the aims and objectives of the RTP.

Developing a more effective and sustainable transport network in the region is not an end in itself; it must make changes that improve people's daily lives.

Whilst the region has sought to enhance the transport system for those living, working and visiting South West Wales, in recent years, changes in demand and connectivity continues to require ongoing and dynamic assessment of transport provision. The production of this Regional Transport Plan (RTP) and its associated delivery plan aims to identify both necessary and opportunistic improvements to transport provision across the region. These improvements are intended to enhance access to employment and healthcare, address environmental impacts such as noise, pollution, and air quality, reduce road traffic collisions, and foster social cohesion.

The effectiveness of transportation services plays a crucial role in shaping the region's external image, in maximising investment opportunities within the local economy and enhancing the regions tourism offer. To ensure equitable access to transportation, affordability must be a central focus of the Regional Transport Plan (RTP).

Transport is a crucial factor in placemaking, making it essential for our Region that the Regional Transport Plan (RTP) is closely aligned with the forthcoming Strategic Development Plan (SDP). However, since the SDP is not set to be developed within the timeframe of this initial RTP, the RTP has taken into account the existing and emerging Local Development Plans (LDPs) from the four local authorities. It is important to note that, during the preparation of their new LDPs, all local authorities must consider and demonstrate that they have fully explored all opportunities for collaboration with other LA's on both the plan preparation and

the evidence base, therefore some studies that will feed into emerging LDP's have already been undertaken at a regional level.

Table 4. RTP Objectives

<p>Llwybr Newydd Priority 1</p> <p>Bringing services to people in order to reduce the need to travel.</p>	<p>Llwybr Newydd Priority 2</p> <p>Allow people and goods to move easily from door to door by accessible, sustainable and efficient transport services and infrastructure.</p>	<p>Llwybr Newydd Priority 3</p> <p>Encourage people to make the change to more sustainable transport.</p>
REGIONAL TRANSPORT PLAN AIMS		
<p>To improve physical connectivity through enhancing active travel infrastructure to local services.</p>	<p>To achieve a shift away from private car, use to more sustainable travel modes through service and infrastructure improvements.</p>	<p>To enable our residents to change their travel behaviour to use low-carbon, sustainable transport.</p>
REGIONAL TRANSPORT PLAN OBJECTIVES		
<p>OBJECTIVE 1</p> <p>To improve active travel infrastructure to local services in the first instance. Where this is not feasible enable residents to make sustainable travel choices.</p> <p>OBJECTIVE 2</p> <p>To have a transport system that supports the growth and development of sustainable economic activity in the region.</p>	<p>OBJECTIVE 3</p> <p>To have a transport system that recognises the hierarchy of travel modes identified in Llwybr Newydd, which is as follows:</p> <ol style="list-style-type: none"> 1. Walking and cycling (highest priority) 2. Public transport (rail, bus, community transport) 3. Ultra-low emission vehicles and taxis 4. Private motor vehicles (lowest priority). <p>OBJECTIVE 4</p> <p>To have a transport system that recognises the diverse communities of the region and their varying transport needs.</p>	<p>OBJECTIVE 5</p> <p>Make sustainable transport more available, attractive and affordable.</p> <p>OBJECTIVE 6</p> <p>To promote sustainable travel choice wherever possible.</p>

6. The Policies

This section of the South West Wales Regional Transport Plan sets out the regions policy framework.

It details the approach at a regional level to the delivery of the Wales Transport Strategy, Llwybr Newydd, it also reflects the regions key priorities and is aligned to the Regional Transport Plan's six objectives.

In accordance with the Guidance set out by the Welsh Government for the development of the RTP, the policies have been developed to support the delivery of our RTP vision and objectives. The policies aim to:

- Achieve the vision and objectives of our RTP.
- Set the framework for the projects and programmes in the RTDP.
- Support the vision and ambitions of the WTS, with an emphasis on the three short-term priorities.
- Support the nine mini-plans and cross-cutting pathways within the WTS.
- Encourage people to make smarter travel choices.
- Make best use of existing transport infrastructure; and
- Follow the Sustainable Transport Hierarchy.

The policy framework takes its major inputs from the evidence set out in earlier sections and the imperatives to stimulate the regional economy, ensure our environment is protected and our rural communities are connected.

The policy framework is designed to provide a tool for decision making when investment in transport schemes and initiatives are proposed. It also provides a clear remit to the region's four Council's, as transport and highway authorities, to ensure the transport network evolves in ways that meets the major challenges facing it, and reflect the Welsh Transport Strategy's core priorities. The policy framework further sets out our approach to responding proactively, to specific opportunities that can generate positive change across the region, if the transport system is able to provide the levels of access that would be required.

The policies devised are specific to South West Wales and the transport and socio-economic challenges and opportunities within the region.

Llwybr Newydd Priority 1 Policies

LLWYBR NEWYDD PRIORITY 1

Bring services to people in order to reduce the need to travel.

Llwybr Newydd Priority 1 provides a clear vision to reduce the need for travel by bringing services and facilities closer to people. The policies define the general approach to reducing travel by bringing services to people and making access to local services better. This will be achieved by ensuring that a transport network that stimulates economic and social activity is delivered in the most suitable way and by meeting the specific transport challenges our rural communities face.

REGIONAL TRANSPORT PLAN AIM

To improve physical connectivity through enhancing active travel infrastructure to local services.

REGIONAL TRANSPORT PLAN OBJECTIVES

OBJECTIVE 1: To improve active travel infrastructure to local services in the first instance. Where this is not feasible enable residents to make sustainable travel choices.

OBJECTIVE 2: To have a transport system that supports the growth and development of sustainable economic activity in the region.

REGIONAL TRANSPORT PLAN POLICIES

POLICY 1 - REDUCING THE NEED TO TRAVEL

Reducing the need to travel is an essential element to achieving a sustainable transport system. The region currently has a high level of car ownership with 81.5% of households having at least one car (or van) available for use. This level in turn leads to a high level of car use. A reduction in travel demand will be reliant on the RTP being aligned with land use planning, economic development and environmental policies. The upcoming development of the SPD will be a key link between transport and planning. In the meantime, local authority LDPs and their planned updates will provide an essential link to the RTP and its objectives. This closer working and policy alignment can ensure that housing, employment and services are located closer to each other which reduces the need to travel and minimises the distances involved.

1.1 Influence the location of services and journey destinations through collaboration with the Strategic Development Plan (SDP) and Local Development Plans (LDP).

The region will reduce the need to travel by aligning with land use, economic, and environmental policies and working with developers and service providers to ensure that housing, education, employment, health care, retail and leisure services are located where there are sustainable transport links. It will influence the future SDP and existing LDP by providing transport related input to guide development. This will ensure that travel distances are minimised, and future investment is directed away from car dependant areas and towards areas well served by sustainable transport.

1.2 Promote digital connectivity and accessibility

The region will support travel planning for new developments, including recognising that enhanced digital connectivity and access to superfast broadband plays a crucial role in reducing travel demand by enabling access to services online.

POLICY 2 - MAKING LOCAL TRANSPORT INFRASTRUCTURE AND SERVICES FIT FOR PURPOSE

It is important to ensure that the current transport network is in a suitable state to meet the demands currently placed upon it. It is required to set a basis for the delivery of better and improved transport in the region. As this is a multi-agency area of work, the work includes aligning with key stakeholders to develop proposals for change and improvement.

The region's transport infrastructure is owned and operated by a range of public and private sector organisations. In particular a majority of the region's main transport spines are operated by the Welsh Government and its supporting agencies, (TfW for rail and the South Wales Trunk Road Agency and TfW Rail. Each local highway authority has maintenance standards, whilst buses and trains have operational and safety standards imposed by their respective regulators.

2.1 Collaborate with organisations and agencies to enhance public transport provision

The region will work with a range of stakeholders to ensure that public and community transport is accessible to all users and that innovative solutions are developed for those areas with little or no transport provision. This will include, but is not limited to, improved infrastructure and interchange facilities, improved information and simplified ticketing systems that reduce barriers and improve access to multi-modal journeys.

POLICY 3 - TRANSPORT THAT ENABLES ECONOMIC DEVELOPMENT

The economy in the region relies upon the transport system to deliver growth where alternatives to reduce the need for travel are not appropriate.

The RTP is a vehicle to deliver on the aspirations of the Regional Economic Framework (REF). The REF promotes three missions - Mission 1 Establish South West Wales as a UK leader in renewable energy and the net zero economy. Mission 2 Build a strong, resilient and 'embedded' business base. Mission 3 Grow and sustain the Welsh Language, Heritage and Culture of South West Wales.

In transport terms, Mission 1 will require the RTP and RTDP to respond to the move towards a new zero carbon economy. This will require a clear RTP vision to decarbonise the transport network and provide transport for people and goods to the new industrial clusters delivering the green technology revolution. Mission 2 requires the RTP to support economic development through the provision of access the region's economic base. Mission 3 is directly aligned with the wellbeing requirements of the RTP and the influence that the transport network can bring to bear on the cultural life of the region within the context of economic development.

3.1 Responding to economic opportunity in the region

The Region will enhance transport connectivity in South West Wales to support regional economic growth by delivering a decarbonised transport system and removing barriers to business development.

This will include collaboration with the key stakeholders that deliver economic development within the region and responded to the Regional Economic Plan.

3.2 Promote economic growth within Town Centres

The Region will support economic vitality of town centres through walking, cycling, public transport and public realm enhancements. We will improve sustainable transport to strategic employment sites and ensure that public transport services run timetables which align with employment patterns.

POLICY 4 - TRANSPORT AND LAND USE PLANNING, INCLUDING THE FREEPORT AND MAJOR DEVELOPMENTS

The RTP will be a material consideration for the SDP and LDPs covering the region. The majority of land use development proposals across the region will also need to be reflective of the RTP through the way the RTP influences and supports development in ways which provide better, safer, more sustainable transport options.

The RTP will in due course provide the transport evidence base for the emerging regional Strategic Development Plan (SDP). The RTP has a vital role to play in advising on where development can be located to minimise the need to travel and also how Transport Assessments can inform planning decisions.

4.1 Interact with SDP and LDP

The RTP will help inform and influence the development of new and existing LDPs as well as any emerging work on the SDP.

4.2 Inform Major Development planning

The RTP will inform the development of the SDP and will influence land use planning by ensuring new developments or proposals are appropriately located and prioritise sustainable transport options (as detailed in Planning Policy Wales) and mitigate any impact on existing infrastructure or the wider environment. It will support the development of transport assessments and ensure developer contributions (through legally binding agreements) are directed towards transport improvements where needed.

Furthermore, it will evaluate major developments, to assess potential transport impacts, through the use of transport modelling, assessments and/or statements which will help facilitate any necessary transport investments where required.

Llwybr Newydd Priority 2 Policies

LLWYBR NEWYDD PRIORITY 2

Allow people and goods to move easily from door to door by accessible, sustainable and efficient transport services and infrastructure.

Llwybr Newydd Priority 2 provides the overarching context for investment in our transport system. These policies provide the region's view on how the transport system delivers for our communities and how choice of travel mode may be influenced. The policies proposed also reflect the need to ensure that the transport system decarbonises and minimises the wider impacts of demand for travel. To support these overarching policy objectives, a series of mode-specific policies will provide the detail required to support choices on future investment.

At present the evidence for the RTP shows high levels of car use across the region; car use for travel to work in 2021 was 65.5% region wide but this reduced to 56.1% in Swansea where in contrast bus use is highest at 2.8%.

REGIONAL TRANSPORT PLAN AIM

To achieve a shift away from private car, use to more sustainable travel modes through service and infrastructure improvements.

REGIONAL TRANSPORT PLAN OBJECTIVES

OBJECTIVE 3: To have a transport system that recognises the hierarchy of travel modes identified in Llwybr Newydd, which is as follows:

1. Walking and cycling (highest priority)
2. Public transport
3. Ultra-low emission vehicles
4. Private motor vehicles (lowest priority)

OBJECTIVE 4: To have a transport system that recognises the diverse communities of the region and their varying transport needs.

REGIONAL TRANSPORT PLAN POLICIES

POLICY 5 - RURAL AREAS AND TRANSPORT PROVISION

The region consists of main urban centres such as Swansea, Neath and Llanelli along with valley communities in the Afan, Neath and Swansea valleys and large rural areas throughout the region. Rural areas of the region create a unique set of transport challenges, especially in rural Carmarthenshire and Pembrokeshire. Road infrastructure away from the main corridors is less prevalent, public transport

services are less frequent and the geography and often distances travelled from rural areas makes cycling and walking a less favourable choice of travel mode.

In the light of these challenges, the Region seeks to ensure that alternatives to the private car are available, to provide travel choices and to enable access to education, employment, health facilities and everyday services for households that have no access to private transport. To support that goal, the RTP policies are designed to enable the development of a range of service delivery methods to provide sustainable shared transport in all areas of the region.

5.1 Develop non car-based transport options in rural areas.

The Region will ensure that alternatives to the private car are available in both urban and rural areas that so that everyone can make travel choices. A key focus for us will be to encourage connections to bus and rail services that then facilitate multi modal journeys. Where traditional modes of public transport are not financially viable alternative modes will be considered through community led car and bike schemes and demand responsive transport. The Region will deliver a baseline standard across the region particularly in areas of high transport poverty.

POLICY 6 - THE TRANSPORT SYSTEM REFLECTING LOCAL COMMUNITIES IN SOUTH WEST WALES

The communities of South West Wales are richly diverse. However, the ability for people to work, learn and live in our communities varies considerably throughout the region. The region is heavily reliant on a transport network that recognises and responds to a range of diverse needs.

6.1 Develop a transport system that recognises the diversity of our communities

The Region will aim to build transport infrastructure that is designed to reflect and support the unique needs of local communities in South West Wales, for example, facilitating connectivity between Welsh language and local cultural hubs, including Welsh medium schools. This will include ensuring accessibility, promoting sustainable travel options, and enhancing connectivity between communities. Community input will be taken into account when planning and developing our transport projects to help reflect these diverse needs.

POLICY 7 - TRAVEL MODE CHOICE

The Welsh Transport Strategy sets out an approach that emphasises the use of sustainable modes of travel wherever possible.

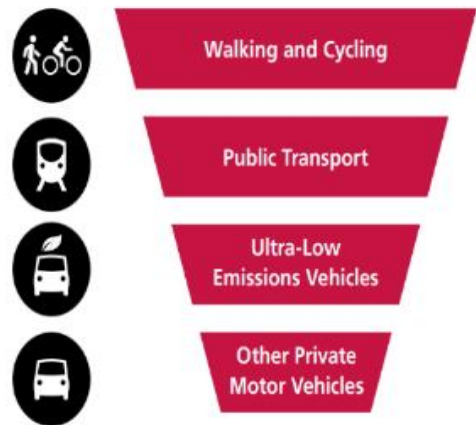
Most personal trips in Wales are relatively short distance, averaging 8 miles and are made by private vehicle. The RTP aims to encourage modal shift to sustainable transport through improving connectivity between modes, at transport interchanges, enabling mobility as a service and making transport options clearer.

The RTP follows this approach to ensure that the maximum use of sustainable methods of travel is achieved where the need to travel cannot be reduced.

7.1 Enable sustainable travel mode choice in alignment with the WTS hierarchy

The region will follow the transport priorities and transport hierarchy set out in the Wales Transport Strategy (as illustrated below) and will facilitate and encourage the use of sustainable modes of travel where the need to travel cannot be reduced. The Region will ensure that sustainable transport is a safe, accessible, reliable, affordable, competitive and convenient option for day-to-day travel.

This will be done by improving infrastructure across walking, wheeling and cycling (active travel) infrastructure, at bus and rail stations and with ULEV vehicles.



POLICY 8 - DECARBONISATION AND ENVIRONMENTAL IMPACTS

The transport network in the region is a major contributor to the emission of greenhouse and other polluting gases. The region needs to set a policy requirement to take action and target investment to decarbonise the region's transport system at the best possible rate and in line with overall Welsh and UK Governments targets.

As part of the proposed Celtic Freeport, a commitment has been made to deliver infrastructure that delivers new fuels (hydrogen, biofuels and sustainable aviation fuels) as well as floating offshore wind (FLOW) technology designed to work towards decarbonisation targets. This approach and similar initiatives will be required to achieve the required targets.

The region needs to ensure that environmental impacts are fully assessed as schemes are developed. It will therefore be factored in to transport investment

decisions made, in line with the climate emergencies declared by the four local authorities in the region.

8.1 Enable decarbonisation of the transport system

The Region recognises that transport is a major contributor to pollution, emissions of greenhouse gasses and other pollutants that can contribute to health risks and inequalities. The region will take targeted action to decarbonise its transport system in line with Welsh and UK targets, while ensuring that environmental impacts of new transport interventions are thoroughly assessed and considered in any decisions.

8.2 Minimise Environmental Impacts

The Region will ensure that environmental impacts (including impacts to air quality, landscape, townscape, heritage, ecology, natural resources and noise/tranquillity) of proposals are fully assessed and minimised and that all proposals provide a positive impact to the environment in the broadest sense, enhance biodiversity and maintain eco system resilience.

POLICY 9 - WALKING, CYCLING AND ACTIVE TRAVEL

The Active Travel (Wales) Act 2013 (the Act) required Councils in Wales map and plan suitable routes for active travel, including implementing year-on-year improvements in specified settlements as directed by the Welsh Government.

The Act requires Local authorities to create, publish, and maintain an Active Travel Network Map, which includes:

Existing routes – these are routes that meet the Active Travel standards; and

Future routes – these include routes that are either not yet established or those that do not meet the criteria to be classified as existing routes and need enhancements. Consequently, Local Authorities Active Travel Network Maps are crucial background information that will guide the region's proposals for active travel funding and initiatives.

The Region sees the need for walking, cycling and wheeling (active travel) schemes as benefitting journeys to education, work, health facilities and leisure activities.

9.1 Make active travel the first choice for all local journeys

The Region will ensure that the Transport Hierarchy is maintained, and that active travel is embedded within transport projects on a case by case basis.

9.2 Improve first and last mile travel options

The Region will enable multi-modal journeys by providing first and last mile Active Travel options. This will include supporting appropriate storage for bicycles and e-bikes in residential areas/ homes, at trip attractors, public transport interchanges, and supporting shared micro-mobility schemes. The Region will deliver safe and secure Active Travel infrastructure, connecting communities both in urban and rural settings, enabling short and medium journeys to be undertaken actively.

POLICY 10 - RAIL

The rail network forms a key spine of the transport system in South West Wales.

The current levels of service will need to evolve to ensure that the rail (passenger) service reflects the changing needs of the region. Currently, services run between Swansea and Cardiff typical run up to 3 time each hour with up to 2 trains per hour from Carmarthen to Swansea. In reality though, stopping patterns mean that many local stations on the Carmarthen to Swansea to Cardiff line only receive at most an hourly service. West of Carmarthen, two challenges to rail use are seen. Firstly, the number of direct trains from the east of the region is limited and secondly frequencies are at best hourly and for many local stations notably lower. Access to local stations is often poor with limited bus links and low levels of secure parking available. New stations and services are needed to make rail a competitive option to car use. Journey times currently are uncompetitive with car travel for many trips with a Milford Haven to Swansea rail journey taking around 40 minutes longer than the same journey by car.

Freight by rail is limited to small number of key routes, serving major industrial locations. As the Freeport develops for example a greater reliance on freight movement by rail will be required for amenity and environmental reasons.

10.1 Collaborate with rail agencies to improve the rail offer in the region

The Region will work with Welsh Government and TfW to seek continuous improvement to the rail network in and beyond South West Wales to facilitate inward investment and support modal shift that reduces pressure on the highway network. This will include consideration of timetabling/service frequency and feasibility of delivering new (or reopening old) railway stations and lines.

The region will also work with the relevant agencies and operators to seek an increase in opportunities to move freight by rail.

10.2 Enable integration between modes.

Integration between various modes of travel will be improved to encourage more sustainability and ensure access for all residents and visitors is suitable. As a priority, this will include facilitating sensible connectivity between rail and bus provision.

POLICY 11 - BUSES AND TAXIS

The local bus network presently operates on a commercial basis, albeit with considerable levels of public subsidy from both local authorities and central government. Transport for Wales (TfW) also operate the inter-regional Traws-Cymru services and Fflecsi bus DRT services, in Pembrokeshire

The region works with bus operators within the existing regulatory system to develop a network that provides maximum coverage on a commercial basis. The four local authorities use their existing powers to subsidise routes deemed to be socially necessary.

Should regulatory reform powers be approved within the lifetime of the RTP; the region will work with Welsh Government and TfW to develop a bus network that maximises coverage, whilst providing sufficient capacity for current and expected future passenger needs.

Taxis play a vital role in transport provision across the region for specific journey types and for important sections of our communities. The four local authorities will continue to licence operators, vehicles and drivers and manage the safety aspects of taxi provision.

11.1 Develop and invest in innovative bus and community transport solutions.

The Region will work with Welsh Government and TfW to seek improvement to the existing service provision for buses within the regulatory frameworks in place. The Region will aim to ensure that public transport remains a viable travel option in all areas that include rural areas where bus services are currently poor. This will require a range of approaches including demand responsive transport, community transport and taxi where demand would not support conventional bus services.

11.2 Collaborate with Agencies in relation to bus regulatory reform.

The Region will collaborate with the Welsh Government, TfW and bus operators on regulatory reform.

11.3 Collaborate with Agencies in relation to bus network and service delivery

The Region will work with Welsh Government and TfW, local authorities and bus operators on the continual improvement of the bus network throughout the region. We will also facilitate the introduction of integrated/simplified ticket system, passenger information systems, bus priority measures, network management, improved bus stops and interchange, driver training, changes to the structure of the bus industry, bus hubs and decarbonisation of the bus fleet.

POLICY 12 - FACILITATING THE USE OF ZERO- AND ULTRA-LOW EMISSION VEHICLES

The key to the greater use of zero and ultra-low emission vehicles is the provision of suitable recharging / refuelling infrastructure. Not all households, for example, will have facilities for the adaption of EV charging.

The technology for the decarbonisation of commercial vehicles is still emerging with long term choices between hydrogen and battery electric vehicles still being explored.

The provision of infrastructure to support mass use of zero emission vehicles is still at an early stage of development and is a matter of regional and national importance

The pace of movement to zero emission vehicles will need to reflect UK government policy on the phasing out of new fossil fuelled vehicles and the shape of future financial structures for taxing of vehicles and / or fuel.

12.1 Facilitate EV charging, including residential charging

The Region will encourage the adoption of zero and ultra-low emission vehicles. A key element will be to implement a comprehensive plan to install charging points in community hubs and residential areas, ensuring that all residents, particularly those without off-street parking, have convenient and cost-effective access to charging facilities, complementing private commercial initiatives .

12.2 Facilitate public sector fleet decarbonisation

The Region will implement a programme for installing charging points and transitioning public sector fleets to electric or hydrogen vehicles while reviewing grey fleet (personal vehicles which are used for business purposes) and policies for zero-emission use. The region will also work with energy providers to ensure that the necessary supplies are available to support the zero-emission rollout.

POLICY 13 - ROADS, STREETS AND PARKING

The region works with organisations such as the Welsh Government, the Trunk Roads Agency, local planning authorities and neighbouring local councils to provide a road network that meets the needs of the region.

Council planning departments, developers and other stakeholders can influence when and how the network is used.

Safety on the road network is a clear requirement for each highway authority.

13.1 Maintain a safe Highway network

The Region recognises that roads are a key means of access to services, work, education and leisure that residents depend on. The region will work alongside Welsh Government, the South Wales Trunk Road Agency, and other key stakeholders to maintain a highway network that is safe, convenient and fit for purpose.

The Region considers highway safety for all users as the highest priority and will work with emergency services and road safety groups to invest where road safety can be improved.

13.2 Develop Road Capacity in alignment with Wales Roads Review

The Region will ensure any additional road capacity is in line with the Wales Roads Review priorities for determining investment in new road schemes.

13.3 Integrate with land use planning to reduce pressure on highway network

The Region will work with land use planning departments to ensure that new developments are located in appropriate locations and have sustainable transport options to reduce pressure on the highway network in alignment with the County Surveyors Society standards.

13.4 Develop car parking management policies that balance parking demand and the wider aims of the WTS and RTP

The Region recognises the important role that parking policy plays in respect to economic activity, accessibility and multi modal interchange. We will implement appropriate demand management strategies to ensure that parking provision reflects the needs of the destination balanced with the WTS and RTP aims.

POLICY 14 - PORTS, FREIGHT AND LOGISTICS

The ports within the region provide both regional and national access to key markets that support the economy of South West Wales and beyond. Although access to ports is primarily through the trunk road network, elements of journeys can involve use of local road networks.

The presence of strategic routes in the region creates a demand for high-quality, safe and secure lorry parking. This is essential for HGV drivers to meet their legal obligations to rest without having to park in unsuitable, often residential, areas.

Last mile deliveries often take place in our town centres and increasingly to directly to homes. The proliferation of vans in affected locations can impact on the amenity of an area and create local air quality issues.

14.1 Work with Agencies to improve access to ports

The Region recognises the need to work collaboratively to facilitate more reliable, effective and sustainable movement of people and freight to, from and through the region's ports. The Region will work to improve access to our ports for goods and passengers.

14.2 Facilitate sustainable freight distribution by rail and ports

The RTP will work with developers, freight operators and customers to encourage more sustainable freight distribution through better access to and use of rail intermodal facilities and ports, this will minimise HGV effects on communities.

14.3 Facilitate sustainable freight distribution on road

The region will work to improve freight distribution services to reduce negative impact on the transport network; this includes both regional and local freight distribution. This will include examining how last mile deliveries can be made more sustainable.

POLICY 15 - AVIATION SERVICES, LOCAL AVIATION INFRASTRUCTURE

The development of major investment opportunities across the region will necessitate access to existing commercial airports for passenger and freight services. This will, therefore, play a key role in the development of the regional economy and facilitate the region's tourism uptake. The region's local aerodromes, Swansea Airport, Pembrey West Wales Airport and Haverfordwest Airport, are primarily used for leisure related aviation and pilot training.

POLICY 16 - MAINTENANCE OF EXISTING INFRASTRUCTURE

The region's transport infrastructure is significant and is an essential part of the fabric of the wider community. A range of stakeholders are responsible for its upkeep and ensuring the infrastructure is well maintained and resilient to change, be this in terms of climate change or local maintenance challenges.

16.1 Investigate supplementary funding for maintenance

The region will support initiatives to generate new sources of revenue to support the maintenance of existing infrastructure. Through the delivery of the RTP the region will seek additional funding to ensure that new infrastructure (including infrastructure for walking and cycling) can be maintained to an appropriate standard and will endeavour to establish commuted sums for the maintenance of new infrastructure.

16.2 Review asset management plans

The existing highways asset management plans will be reviewed to ensure that all new infrastructure is captured, and sustainable modes are included on a regional basis.

Llwybr Newydd Priority 3 Policies

LLWYBR NEWYDD PRIORITY 3

Encourage people to make the change to more sustainable transport

The aim of Llwybr Newydd Priority 3 is to promote the availability and use of sustainable travel choices wherever possible. The geography and demographics of South West Wales are such that sustainable travel will not be possible for everyone.

The policies in this area are designed to encourage and enable sustainable travel choices wherever possible. The issues addressed by the policies extend well beyond facilitating access to the most sustainable mode of travel for a specific journey. They range from how people plan their journey, the use of technology and how to access travel information.

REGIONAL TRANSPORT PLAN AIM

To enable our residents to change their travel behaviour to use low-carbon, sustainable transport.

REGIONAL TRANSPORT PLAN OBJECTIVES

OBJECTIVES 5: Make sustainable transport more available, attractive and affordable.

OBJECTIVES 6: To promote sustainable travel choice wherever possible.

REGIONAL TRANSPORT PLAN POLICIES

POLICY 17 - A SAFE, AVAILABLE, ATTRACTIVE, ACCESSIBLE AND AFFORDABLE TRANSPORT NETWORK

The future transport network will need to provide an effective means of moving around the region. For people to make informed and sustainable travel choices the network will need to be developed in such a way as to make sustainable travel choices available, attractive and affordable. Currently the region has a high levels of car use. In 2021 65.5% of journeys to work involved the use of a car or van, whilst public transport and active travel accounted for 10.0% of journeys.

Roads and active travel routes are open 365 days a year and need to be available at all times. Transport infrastructure needs to accommodate all potential types of users. The fare for public transport journeys is a key factor in determining if public transport is a viable mode of travel for many travellers.

We also want the region's residents and visitors to be able to travel around in safety and for transport options to be accessible by all.

17.1 Develop an available and attractive network

The region will collaborate with Welsh Government and TfW to develop a -quality public transport network that meets the needs of travellers, ensuring a reliable service, availability at convenient times and serving appropriate locations.

17.2 Develop an accessible network

The region will work with Welsh Government, TfW, and public transport providers (including the taxi trade) to ensure that individuals with health, physical, or sensory difficulties can access the transport system in an easy, respectful and dignified way, making public transport accessible to everyone.

17.3 Develop an affordable network

The region will partner with Welsh Government, TfW and key operators to implement an integrated ticketing system and to make public transport journeys more financially advantageous than car journeys whenever possible.

17.4 Develop a safe network

The RTP recognises that safety of all users is paramount not just for road safety but also for personal safety. The region will work with partners such as the police, bus and rail companies to seek improvements to infrastructure and services to ensure that sustainable modes or transport are safe and convenient.

POLICY 18 - TRANSPORT INFORMATION

The provision of information is key to the making of informed journey choices whether by individuals or businesses.

This will require Developing transport information systems across the region and more widely that support the provision of information that users of the transport network need to plan their journeys. As the systems need to be compatible with wider pan-Wales system it is likely that TfW will lead on this.

18.1 Collaborate with agencies to improve transport information

The region will support the flow of transport information to users and potential users, collaborating with relevant organisations to develop accessible transport information. The region will contribute to ensuring that information is presented in formats suitable for all communities, particularly those with protected characteristics. Welsh language standards will be upheld throughout.

POLICY 19 - TRANSPORT TECHNOLOGY

Technology maintains, supports and transforms network performance, and with technological advancements in the future, this is likely to result in significant changes to the technology that underpins and controls much of the network. The region's diverse geography is such that no single approach to technology roll-out is likely to be successful. Rather a mix of technologies will be required.

19.1 Utilise technology to monitor and improve the transport network

The region will capitalise on the use of technology to monitor network performance and support targeted interventions. This will include reviewing our route hierarchy to adapt to development, environmental, or community needs. For example, the region will support highway authority partners in using technology-driven traffic control systems and real-time passenger information systems to promote bus priority.

POLICY 20 - PROMOTION OF SUSTAINABLE TRAVEL AND THE RTP

For the RTP to be successful its key messages and outcomes will need to be promoted within the region and further afield. For the RTP to reach its goals, behavioural change initiatives are seen as an ongoing and vital activity to promote the use of active travel and public transport. Given the wide-ranging nature of promotional activities, a regional and coordinated approach is likely to bring better overall than local individual initiatives.

20.1 Encourage modal shift through promotion

The region will promote the use of active travel, public transport and ULEV in the region to encourage modal shift to more sustainable modes of travel. For example, workplace and school travel planning initiatives,

travel training or cycle training that encourages positive behaviour change. This will be particularly important in relation to education, employment and healthcare journeys.

POLICY 21 - TOURISM AND TRANSPORT

The tourism offer within the region is multi-faceted covering the two national parks, and an area of outstanding natural beauty. The region offers the traditional seaside experience for example at the Gower peninsular, Pendine, Tenby and Aberavon. There are multiple varied visitor attractions throughout the region including mountain biking in the Afan Valley, Waterfall Walks in Glynneath, St Davids Cathedral, National Botanical Gardens along with ancient monuments and castles including Kidwelly castle and Oystermouth Castle. There are several museums, art galleries and theatres within Swansea and throughout the region.

There are also a number of sporting attractions throughout the region including the Swansea.com stadium in Landore, Swansea and Parc y Scarlets in Llanelli.

Events are also key to the visitor offer taking place at a number of centres throughout the region.

21.1 Enhance access to tourism locations

The region will aim to enhance tourist access and experience across the region but with particular focus on coastal areas and the Pembrokeshire Coast National Park by enhancing opportunities for tourists to arrive by sustainable modes and use sustainable travel whilst in the region. This will involve collaborating with the respective agencies to ensure services and infrastructure align with visitor needs.

The region will support the development of event management travel plans, particularly in partnership with key promoters of major regional events prioritising sustainable modes wherever possible to include encouraging additional or later public transport services on event days.

7. Introduction to the Regional Transport Delivery Plan (RTDP) and the assessment of schemes

The final version of the RTP will include the final RTDP for the region. The RTDP will encompass a fully prioritised list of the interventions in the Region that the CJC and the four local authorities will progress to help achieve the RTP objectives and to implement the WTS at the regional level.

The RTDP focuses on those interventions that are priorities for the five years from 2025 to 2030.

Scheme Assessment

Where available, the final RTDP will include project information to support the prioritisation process, in terms of deliverability, affordability and management. Where projects are at the concept or early development stage, assumptions will be made based on similar projects, to assess their deliverability, affordability and management.

An initial list of schemes and initiatives have been collated for the draft RTDP. The region, in conjunction with Transport for Wales, has developed a scheme prioritisation tool that will provide an evidence-based analysis of the degree to which schemes and interventions meet the RTP objectives.

The detail of the prioritisation tool and its operation is provided in Appendix 5. Both qualitative and quantitative (numerical) assessments will be undertaken to provide a reasoned justification for each scheme identified as “essential” in the RTPD for the delivery of the RTP. In addition to the schemes within the remit of the RTP and RTDP the development of the initial scheme list has identified a small number of schemes that are the responsibility of other bodies to deliver. These appear essential to ensure the delivery of the RTP objectives and therefore also listed.

Delivery

To deliver the RTDP the CJC will work in partnership with government at all levels and the agencies they support. The CJC is committed to maintaining and developing further the relationships established during the development of the draft RTP to enable this.

The delivery of individual RTDP schemes and initiatives is proposed to be conducted by the four local authorities within the region who hold statutory powers as the transport and highway authorities. In some cases, delivery by a third party will be necessary. In this case the CJC will consider identifying a lead local authority to liaise and assist.

The CJC will collate information on progress of the RTDP and report these to the Welsh Government as required.

At this stage of the RTDP’s development the region is committed to assessing the revenue implications of the RTDP, a large and complex multi-year programme.

Delivery of the schemes and initiatives listed in the RTDP is predominantly subject to the receipt of grant funding. The prime source of capital funding for interventions and schemes will remain through central government grants for infrastructure investment and central and local government for revenue.

All interventions progressed through the RTDP will require assessment against WTS priorities using the staged approach set out in Welsh Transport Appraisal Guidance (WelTAG) and will need to demonstrate value for money at each stage of the process.

DRAFT

8. The RTDP priorities – summary

In this section commentary on the core principles of the recommended schemes within the draft RTDP is set out. The full draft RTDP is in Appendix 7.

The draft RTDP recognises that a number of interventions that are common across all four local authorities are best joined together to form a regional level programme of work over the 5-year life of the RTP. An initial listing of circa 200 interventions across the region has been identified for further development into the final RTDP.

ULEV developments and an influencing travel behaviour programme are two examples of where a common approach and possibly shared procurement may bring economies of scale and a critical mass of delivery.

The draft RTDP also recognise that the absence of the transport reviews conducted on the M4 (South East Wales) and A55 (North Wales) corridors requires the region to conduct additional scheme development work.

Whilst the trunk road and rail service elements of such a strategic analysis would be the province of Welsh Government and Transport for Wales (and the UK government for most rail infrastructure) and will have an outcome in the replacement of the Wales NTDP from 2027 onwards, there is a need at the regional level to conduct a small number of transport corridor level studies to ensure that individual schemes on these corridors are promoted and delivered in a timely and logical sequence across the RTP period.

Within the RTP reference has been made to a number of land use and economic developments that will require the development of transport schemes as more detail emerges. Examples include the Afan Valley Leisure complex and the Freeport sites in Pembrokeshire and Neath Port Talbot.

There are also a small number of non-transport infrastructure developments that may be developed during the RTP timescales, where a transport network response will be required for example the potential new district general hospital in west Wales and a refreshed Swansea Bay barrage proposal. In addition, the Swansea Bay City deal which runs to 2031 has a requirement for transport interventions at its various schemes that may require development of extensive transport solutions.

To meet both of these scenarios the final RTDP will include a 'development fund' taken from the overall, funding pot to ensure that a regional level detail proposals for intervention can be developed within the RTP framework and, if necessary, brought forward as potential schemes.

The region has identified a small number of high priority major projects where the cost value (over £20m) is likely to be an impendent to the delivery of a rounded programme across the 5-year RTP period. The region is about to commence a dialogue with the Welsh Government to assess how in the final RTDP these may

be fundable and what, if any, non-transport funding could potentially be available to support delivery.

DRAFT

9. Assessment of the RTP

Statutory Assessments

Integrated Impact Assessment

An Integrated Impact Assessment (IIA) is being undertaken to support the RTP as it is being developed. The IIA integrates the requirements of Sustainability Appraisal (SA) and Strategic Environmental Assessment (SEA), which are both legal requirements. In addition, Welsh Government requires the preparation of an IWBA in accordance with the Welsh Transport Appraisal Guidance (WelTAG). WelTAG states that an IWBA may need to be supported by relevant statutory or regulatory impact assessments including Equalities Impact Assessment (EqIA); Welsh Language Assessment; and Health Impact Assessment (HIA). To provide a holistic approach to the development of the SWW RTP, these assessments are combined within this IIA. The integration of environmental, well-being, equalities, language and health assessments into one process ensures that a collaborative approach is undertaken on different issues, sharing knowledge and recognising links between topics in a consistent and transparent manner.

The purpose of the IIA is to integrate the principles of sustainable development, including well-being, at all stages of the plan-making process.

This provides a robust and thorough mechanism for identifying issues and opportunities, assessing impacts including cumulative and indirect effects and undertaking monitoring in a holistic manner. Overall, the IIA will facilitate a more rounded view of the sustainability implications and opportunities arising from the SWW RTP. The IIA is a process for predicting and evaluating the likely social, economic and environmental impacts of a plan or policy, and aims to ensure that sustainable development is at the heart of the plan-making process. In addition, it can also be used to capture cultural impacts, which enable it to be consistent with the four components of sustainable development in Welsh law.

The Draft IIA Framework is the main assessment tool used during the IIA and comprises a series of 13 Draft IIA Objectives covering social, economic, cultural and environmental issues identified, ensuring that the requirements of each of the integrated assessments are included. The IIA Objectives will be used to assess the final RTP as it develops. To help measure the performance of the final RTP components against the IIA Objectives, these are supported by a series of questions. Baseline data at the national and regional scale has been collated (see Appendix B), as this provides a means of determining current performance across Wales and gauging how much intervention or the extent of work needed to ensure a positive direction in the achievement of more sustainable development.

The responses also indicated following consultation with Natural Resources Wales (NRW), the RTP will need to be subject to Habitats Regulation Assessment Screening.

The IIA Scoping Report in relation to the RTP is located at Appendix 6.

Monitoring of the RTP

The final RTP will include a Monitoring and Evaluation Plan (MEP).

The MEP will demonstrate how the region's progress in achieving the national priorities and ambitions in the WTS will be monitored, measured and assessed. The MEP will include a set of measures with baseline information and includes a range of qualitative outcomes and quantitative measures. These measures are to be based on the framework of measures from the IIA while drawing on the WTS monitoring framework adapted for regional needs.

The MEP will provide an overview of the outputs that will be delivered by the final RTDP projects; the resulting outcomes and impacts that would be expected; and how the expected benefits would be measured and monitored.

The CJC are required to submit annual performance reports on the RTP's to the Welsh Government.

A comprehensive evaluation will be undertaken midway through the RTP period to assess whether the RTP is delivering its outcomes, providing value for money and whether there are any unintended consequences.

The results of the evaluation will feed into the development of a subsequent RTP and new NTDP due in 2027.

Appendix 1 Glossary

CJC	Combined Joint Committee - a new local government body that provides the decision making for matters that function across local authority boundaries
Concessionary Fares	A Welsh Government led scheme to provide targeted reductions in public transport fares or free travel for certain groups of public transport users, principally used on buses
Freeport	A tax-free area that is designed to encourage business investment and economic growth
HGV	Heavy goods vehicle
IIA	Integrated Impact Assessment – statutory assessment of a plan or policy document that may include a wellbeing assessment and a strategic environmental assessment
LDP	Local development plan – a local policy document that sets detailed land-use planning proposals within a Council's area
Llwybr Newydd	The Welsh transport strategy 2021 - the Welsh national plan for transport, supported by the Wales National Transport Delivery Plan 2021
MEP	Monitoring and Evaluation Plan
National Park	Areas designated as protected landscapes because of their special qualities.
Network Rail	UK national body that operates the majority of rail tracks in Wales
Regional Economic Framework	A regional policy document that sets out the region's economic development plans. This includes the Regional Economic Delivery Plan (REDP)
RTDP	Regional transport delivery plan which works alongside the RTP and the Wales National Transport Delivery Plan 2021 to identify investment in transport services and infrastructure
RTP	Regional transport plan
SDP	Strategic Development Plan - a policy document outlining land use policy and options at the regional level.
SSSI	Site of Special Scientific Interest
Swansea Bay City Deal	A 15-year (2016 to 2031) investment programme focused on economic growth and employment opportunities across the region
TfW	Transport for Wales - a Welsh Government wholly owned company. It exists to drive forward the Welsh Government's vision of a high quality, safe, integrated, affordable and accessible transport network in Wales.
Traws-Cymru	Transport for Wales' cross-region long distance bus routes which aims to link areas of Wales where rail services are limited
Trunk Road	Roads of national importance that are controlled by the Welsh Government
Wales Road Review	A review conducted in 2022 of the case for investment in major roads across Wales
WelTAG	Welsh transport appraisal guidance - a staged approach to assessing investment in transport scheme as an aide to decision making
WTS	See Llwybr Newydd, above

Appendix 2 Engagement Plan

Timeline	Stakeholder Cohort	Engagement Method	Status
Various governance throughout programme	SWW CJC subcommittee, scrutiny and full committee: <ul style="list-style-type: none"> • Implementation Plan – Oct 23 • Case for Change – Feb 24 • Update – May 24 Delayed due to general election – July 24 • Policy and General Update – Sept 24 • Draft RTP – Nov/Dec 24 • Final RTP – Spring 25 	Written reports. Available on SWW CJC website	Ongoing throughout programme
Spring 24	All technical stakeholders	Creation of regional transport email address	Completed
May 24	Internal Council SME's	Workshop	Completed
July 24	Elected Members	Workshop	Completed
July 24	Community Councils	Workshop	Completed
July – August	Public survey on 'Case for Change' communications	Social media, press and 'Have your Say' web comms campaign across region	Completed
July 15 th – August 26 th	Informal public consultation on 'Case for Change' – 8 weeks	Online survey and paper copies at key council buildings	Completed
Sept/Oct 24	Consultation with statutory bodies on IWBA	5 week – Statutory Bodies	Sept/Oct 24
September 24	Regional SME groups: <ul style="list-style-type: none"> ▪ Bus Operators ▪ Train Operators ▪ Road Haulage Organisations ▪ Education Providers ▪ Groups with Protected Characteristics ▪ National Parks ▪ Tourist Organisations ▪ Active Travel Groups ▪ Community and Voluntary Organisations ▪ Health & Emergency Services ▪ Environmental Organisations ▪ Economic Development ▪ Celtic Freeport ▪ Energy Providers ▪ Elected Members 	Workshops and 121 calls	Ongoing

	<ul style="list-style-type: none"> ▪ Community Councils 		
Winter 24/25	Formal Public consultation on draft RTP, RTDP and IWBA	Social media, press and 'Have your say' web comms campaign across region	Winter 24/25
Winter 24/25	Formal statutory consultation on draft RTP, RTDP and IWBA – 8-12 weeks tbc	Online survey and face to face drop-in sessions across region, social media engagement	Winter 24/25

DRAFT

Appendix 3 Stakeholder Engagement Outcomes

Bus industry

A workshop with bus operators was held on 4th September 2024. This session was attended by commercial operators, community transport representatives and local authority officers.

Table 1 – Issues raised by bus industry stakeholders

Topic	Issue
Accessibility and inclusion	<p>Bus industry needs to cater for an ageing population. Including consideration of physical, cognitive and sensory limitations.</p> <p>Huge rises in older adults that live in both rural and urban areas and are less likely to drive – access to services is critical for this group.</p> <p>As transport systems increasingly rely on digital platforms (apps for ride-hailing, ticketing, etc.), it is important to consider that older adults may have lower digital literacy. Providing alternative, non-digital ways to access transport is crucial.</p> <p>Need for better integration with hospitals and GP surgeries for health-related appointments minimising wait times and ensuring that residents that travel by public transport can plan their journeys with confidence.</p>
Bus priority	<p>Bus priority needs to be a key consideration. There are many examples across Wales of routes where more resource has to be continually pumped in, just to maintain existing timetables, but to make bus travel truly appealing, it has to be rapid and certainly as quick as the car (but preferably quicker).</p> <p>Overall bus journey times are increasing/speeds are decreasing – but to be appealing journey times need to compare much better with the private car.</p> <p>Poor journey times/need for bus priority is not just an urban issue – examples in Milford Haven, Haverfordwest and the Gower where there are key pinch points.</p> <p>Particular mention of hotspots at:</p> <ul style="list-style-type: none"> - Merlins Bridge, Haverfordwest - Fabian Way/Towy Bridge, Swansea - Valley Way, Llansamlet - Penally. <p>Support for RTP to direct funding towards bus priority on key corridors.</p> <p>In some cases, journey times could be improved with very small interventions – i.e. adjustment to traffic lights. Operators and LPAs need to work together to trouble shoot these issues.</p> <p>Enforcement of bus priority is critical.</p>
Bus stops	<p>Many of the bus stops, particularly out of town, are unmarked. This causes difficulties for both passengers and drivers. Information about stop location in the Naptan database is out of date – e.g. references to stops or landmarks that are not there anymore. Database requires a review/update.</p> <p>Need for basic bus stop infrastructure such as a bus stop flags and raised kerbs at all stops. This would benefit both drivers and customers as the stops are clearly marked and visible for stopping/waiting.</p> <p>Easy read timetables are needed.</p>
Bus/rail interchange	<p>Stop provision at Swansea station is not sufficient</p>

Port Talbot – potential opportunity to focus investment at the new hub rather than the bus station.

Driver training	<p>Lack of bus drivers is a real issue in some areas – including Pembrokeshire, particularly for evenings and in the summer. Pembrokeshire County Council had a previous project to train bus drivers, but this did not get off the ground due to a shortage of examiners within the funding period.</p> <p>In other areas, supply of drivers is more settled, but there is little spare capacity in the system.</p>
Community transport	<p>For those unable to use standard public transit, specialised services like community transport (door-to-door or curb-to-curb services) are crucial. These services need to be reliable, affordable and sustainable.</p> <p>Community transport plays a vital role outside the timetable of regular buses – e.g. for out-of-hours medical appointments.</p> <p>Need to encourage and support existing community transport providers to develop more bespoke and well-integrated community transport services as a solution in both rural and urban areas, that are not considered to be viable routes.</p> <p>Community transport particularly important for people with wheelchairs etc., particularly given lack of wheelchair accessible taxis (or where accessible taxis are otherwise providing school transport).</p> <p>Community transport is turning away people due to lack of drivers/vehicles.</p>
Health	Really important for bus services to respond to the changing way the health service is delivered.
Education	Staggered school times would make a huge difference to the bus industry.
Rural areas	Large parts of the region have a very poor/no bus services.
Tourism	<p>Tourism places a specific seasonal demand on the bus network.</p> <p>Tenby park and ride is important.</p> <p>Bus / rail interchange at St Davids is important.</p>
Alternative fuel	<p>Operators are working on very tight margins – at the moment the purchase cost of electric vehicles is prohibitive. Would only be possible with match funding.</p> <p>Some bus routes are too long for electric vehicles. Routes may be better suited to hydrogen.</p>
Promotion	More needs to be done to promote bus travel – messaging and promotion is often missed at a regional level.
Target	Keen to see targets to help measure success.

Rail industry

A workshop with train operators was held on 4th September 2024. This session was attended by Network Rail, First Great Western, Grand Union Trains, the Rail Forum, SPRAG, North Pembrokeshire Transport Forum and Pembrokeshire Rail User Group and local authority officers. A representative from the Hywel Dda UHB also attended but this feedback is amalgamated with the health workshop feedback in the next section.

Table 2 summarises all of the feedback received; however, it should be noted that aspects related to the rail network directly are outside the scope of the RTP

Table 2 – Issues raised by rail industry stakeholders

Topic	Issue
Governance	Concerns / uncertainties around what will be delivered by TfW. Calls for TfW to engage more with other operators.
	Concern that Great British Railways is very England focussed and that this won't be able to respond to regional demand.
	Important to recognise cross boundary linkages – future of the industry is cross border.
	The SW RTP also needs to link with the Mid Wales and South East Wales RTPs as transport is obviously not limited within individual regions. For example, the Health Board region includes Ceredigion with large numbers of patients and staff travelling between two regions each with their own regional transport plan. The same applies to east-west journeys beyond Neath-Port Talbot.
	Best examples of improved service delivery are where Network Rail is supported by local authorities. Local authorities play a vital role in delivering passengers to the rail network.
Access to stations (including parking)	Parking supresses the demand for rail across the region and so does the bus network. Some stations are car park constrained – e.g. Carmarthenshire.
	Parking is a requirement if people are to be encouraged to use the train (as opposed to the motorway) for longer trips.
	Park at the station for pickup and drop off.
	Distance from Swansea rail to bus station is an issue.
	Safe walk and cycle route to rail stations are really important.
Services	Rail link to Heathrow.
	Services which better link to tourist areas so that people coming into the region choose to come by train.
Reliability	Cancellations, delays and poor information put people off using the train, and then it is very difficult to get them back.
Heath Care	UHB is considering St Clears and Whitland as potential locations for a new urgent and planned care facility. If the St Clears location is selected they will be pushing for a new railway station at St Clears (this is understood to have been put on hold by Welsh Ministers).

Health care sector

A workshop with public health representatives was held on 5th September and was attended by Hywel Dda University Health Board (UHB) and Swansea Bay Health Board. In addition, as noted above a representative from the Hywel Dda UHB attended the rail workshop.

Table 3 summarises all of the feedback received.

Table 3 – Issues raised by health care sector stakeholders

Topic	Issue
Service delivery	<p>The health service is changing in the way it delivers services.</p> <p>A new urgent and planned care facility is planned.</p> <p>Health and well-being centres are planned for town centres.</p> <p>New UHB headquarters in Carmarthen.</p> <p>Transport needs to respond to these changes.</p> <hr/> <p>Existing facilities see increasing pressure on transport and access.</p> <hr/> <p>Overlap with bus industry – as buses can be used to discharge patients.</p>
Trip generator	<p>The health service is a huge trip generator but very few patients or staff currently travel by public transport or active modes. The UHB is keen to encourage mode shift.</p> <hr/> <p>Public transport needs to offer a practical alternative to the car for health care workers to commute.</p>
Ticketing	<p>Public transport discounts for healthcare staff?</p>
Access	<p>Glangwili general hospital – congestion in Carmarthen and on approach road impacts emergency service vehicles.</p> <p>Similar issues at Prince Phillip hospital.</p> <hr/> <p>Routes to Morriston hospital important as patient transfer is often to Morriston.</p> <hr/> <p>More practical, safe walking and cycling routes to hospitals and health care facilities needed. But the sustainable hierarchy should be applied in a balanced way.</p>
EV	<p>Health service is looking to transition fleet to EV.</p>
Community Transport	<p>Improved community transport services could take pressure off ambulance services.</p> <hr/> <p>Need a centralised service for community transport. People don't typically know where to go to plan a community transport journey or to get advice.</p>
Engagement	<p>Regional Partnerships have an increasing role – important to engage.</p>

Education transport sector

A workshop with officers involved in education transport and representatives from University of Wales and Swansea University was held on 12th September

Table 4 summarises all of the feedback received.

Table 4 – Issues raised by education transport stakeholders

Topic	Issue
Traffic volume	School travel contributes significantly to traffic – up to 15% extra traffic on school days.
Locations	Unlikely to be many new schools over RTP period but there are ongoing enhancements and improvements.
	Increasing trend for schools to be integrated with leisure provision – this raises specific transport issues/demands.
	New schools need to be located where they can be serviced by public transport (not in rural areas). However, in NPT particularly there is a lack of sites in urban areas.
	Important to acknowledge that home to school transport is often cross border.
	Travel to Welsh medium schools is a particular issue and can involve longer distances.
	Alternative curriculum means students need to travel between sites during the school day. This is currently the school's responsibility but would benefit from some sort of a co-ordination or brokerage system.
	Travel between university campuses can be difficult and many routes are not well serviced by public transport – for example, between Swansea and Neath campuses and Neath and Morrison (for medical students).
	Additional Learning Needs (ALN) students have specific transport requirements and some travel long distances.
Travel training	Important life skill, particularly in areas like NPT where majority of post 16 students travel to college campuses and need to travel independently.
	Travel training helps to embed sustainable travel choices at an early age and can also influence numbers of young people who are not in education or training.
	Currently funding is only available for students with additional learning needs.
	Particular demand for training for people with autism.
	Opportunity to train travel champions.
	Need for very simple travel information – like tube style maps.
Vehicles / drivers	Big issue with availability of 16+ seater vehicles and drivers.
Timing	School timings create challenges – staggered starts for adjacent sites would be useful.
School zones	Swansea is applying for powers to enforce restrictions at schools using monitoring cameras.
	School streets offer opportunity to improve immediate environment.
	School streets need to be developed in line with School Travel Plans (which are becoming an important requirement).
Staff	Also important to encourage staff to use sustainable modes.

Table 4 – Issues raised by education transport stakeholders

Topic	Issue
Decarbonisation	A real challenge for school buses – school routes tend to be served by older vehicles and routes can be very long (not suited to EV). Potentially need to look at retrofitting school buses to cleaner emission standards.

Other meetings

A series of other one-to-one meetings were also held. An overview of the key points raised in these sessions is captured in Table 5

Table 5 – Issues raised by other stakeholders

Topic	Issue
South Wales Trunk Road Agency	Concerns around lack of suitable routes and amenities for HGVs. Provided context about planned improvements on the trunk road network and potential knock-on impacts on the wider network.
Pembrokeshire Coast National Park Authority	Discussion around issues raised in written response previously submitted (and summarised above).
West Glamorgan Regional Partnership	<p>Recently ran a series of workshops with people with learning difficulties to discuss their experiences of transport (largely use of public transport). Evidence collected from this process will be shared with the RTP team and is very relevant to the policy framework</p> <p>Lack of accessible, easy to read timetable information is their biggest concern – this will be very important to reflect in the RTP.</p> <p>Also, significant concerns around being treated with dignity and respect.</p> <p>The Partnership are in the process of working with end users to develop a Travel Charter. This is possibly an example of good practice that could be highlighted in the RTP.</p> <p>Travel training really important in terms of giving people life skills and confidence to use public transport.</p> <p>Better systems needed to signpost people to support and help with transport. For example, to request assistance on trains or to find alternative format timetables.</p> <p>Important to raise awareness around the problems that people with learning difficulties face using our transport systems.</p>
Swansea Bay City Deal	The Swansea Bay City Deal is an investment of up to £1.3 billion in a portfolio of major programmes and projects across the Swansea Bay City Region – which is made up of Carmarthenshire, Neath Port Talbot, Pembrokeshire and Swansea. City Deal programmes and projects are based on key themes including economic acceleration, life science and well-being, energy, smart manufacturing and digital. City Deal investment does not cover transport, but many of the projects have a transport impact

Table 5 – Issues raised by other stakeholders

Topic	Issue
	<p>or transport need and ensuring people from outside the region can access the area is important. Interested in how the RTP can support the aims of the City Deal.</p>
<p>Celtic Freeport</p>	<p>The Freeport will support new manufacturing facilities and major port infrastructure upgrades to support the roll-out of floating offshore wind (FLOW) in the Celtic Sea.</p> <p>It will also provide the backbone for a cleaner future based on the hydrogen economy, sustainable fuels, carbon capture and storage, cleaner steel and low-carbon logistics.</p> <p>The Freeport opportunity brings potential for significant transformational change and regeneration. This needs to be supported appropriately by an effective and efficient transport network. Transport network improvements are absolutely critical for the success of the Freeport – both to support the construction phase of the project and the long-term economy. The RTP should look to support the Freeport.</p>

DRAFT

Appendix 4 Accessibility Mapping

Please refer to attached PDF document.

DRAFT

Appendix 5 Prioritisation tool details

Moderation workshops to be held in the New Year and schemes will be scored using this tool.

DRAFT

Appendix 6 Integrated Wellbeing Assessment and Strategic Environmental Assessment Scoping Report

Please refer to attached PDF document

DRAFT

Appendix 7 Draft RTDP

Intervention Name	Description including location(s)	Theme
Aberavon seafront plan	Improvements/regeneration of the seafront area in Aberavon. Improvements to active travel routes.	Active travel / walking and cycling
Active Travel Network Map	Delivery of ATNM Schemes	Active travel / walking and cycling
Ammanford and Cross Hands Masterplan	A package of walking and cycling improvements across Ammanford and the wider Amman Valley (referred to as Cwmamman in the Ten Towns), as identified on the ATNM and through various consultations with residents and key stakeholders. Proposed infrastructure will connect to the existing Amman Valley cycleway and aim to identify and address any existing gaps. This scheme would benefit from integration with Ammanford Strategic Transport interchange and the proposed reopening of the Amman Valley Mineral Line. Cross Hands has benefitted from significant investment and development as a strategic employment site in recent years. The town is continuing to grow and encompasses a large number of smaller, residential settlements within it. A Cross Hands masterplan will aim to address gaps in connectivity between areas of the town, ensuring that strategic employment sites are easily accessed by foot and bike and that residents do not become isolated from services by development which is reliant on the private car. This scheme will also consider the missing link between Ammanfrd and Llandeilo.	Active travel / walking and cycling

Intervention Name	Description including location(s)	Theme
Bryn to Goytre active travel route and links to Port Talbot	Improvements to active travel provision linking Port Talbot to Taibach, Goytre and Bryn. Providing local route improvements and an off-road cycle track between Bryn and Goytre. Including widening and installation of a new bridge.	Active travel / walking and cycling
Burry Port Masterplan	A package of measures to compliment and provide connectivity to the Millennium Coastal Path which connects Burry Port and Llanelli. Burry port has a growing significance regionally due to the planned rail turn-back facility. This scheme will deliver walking and cycling improvements to allow residents within the area access to the increased rail services without relying on the private car. The scheme will also provide improved connectivity to neighbouring Pembrey, improving access to Pembrey Country park for residents, rail passengers and tourists.	Active travel / walking and cycling
Cardi Bach SUP	Joint project between Carmarthen and Pembrokeshire; between Cardigan and Whitland via a disused railway track.	Active travel / walking and cycling
Carmarthen Active Travel Masterplan	We are currently progressing a 'new approach' to active travel in Carmarthen, focusing on an involved network and scheme design process which draws on public and stakeholder consultation to deliver a fit for purpose walking and cycling network for the town. The scheme aims to deliver a comprehensive walking and cycling network across the town, connecting into existing infrastructure and tying into flagship strategic active travel scheme, the Tywi Valley Path.	Active travel / walking and cycling

Intervention Name	Description including location(s)	Theme
Coed Darcy development active travel connections	Active travel improvements linking the Coed Darcy housing development to the active travel network	Active travel / walking and cycling
Connecting communities via Active Modes	Creation of new walking and cycling infrastructure both within and between communities and district centres. This programme aims to improve community connectivity, reduce traffic, and enhance health by promoting walking and cycling as part of daily life.	Active travel / walking and cycling
Cross Boundary Active Travel Linkages (East County)	Identify opportunities for cross-border walking and cycling routes between Brynamman and the Swansea Valley, Pontarddulais, Hendy and Pantyffynnon, in conjunction with Swansea and NPT, and deliver a network which connects the two communities, completing the Amman Valley Cycleway. This scheme may be broadened to consider other opportunities to create cross border routes, particularly with Pembrokeshire in the West (between St Clears, Whitland, Laugharne, Pendine, Amroth and Narberth) and with Ceredigion in the North between Llanybydder, Lampeter, Cwmann, Newcastle Emlyn and Cenarth.	Active travel / walking and cycling
Cycle and micromobility hire schemes	Cycle hire and / or micromobility hire in the city centre and key trip attractors, connected to outlying communities where possible.	Active travel / walking and cycling
Delivery of Safe Routes in Communities (SRiC) across Swansea and Road Safety Programme	Delivery of SRiC and Road Safety schemes across Swansea.	Active travel / walking and cycling

Intervention Name	Description including location(s)	Theme
Delivery of small scale park and cycle sites	A package of works to establish small scale park and cycle sites on the urban periphery of Swansea, with associated signage and promotion.	Active travel / walking and cycling
Delivery of Swansea Council's approved Active Travel Network Map	Delivery of routes listed on Swansea's Active Travel Network Map.	Active travel / walking and cycling
E-Bike Charging Network	Provision of e-bike charging at key locations on the active travel network.	Active travel / walking and cycling
Enhanced Pedestrian Routes	Improvement of footway provision, wayfinding and facilities. E.g. Footway widening, provision of dropped kerbs and tactile paving in areas of potentially high footfall in the vicinity of high trip attractors.	Active travel / walking and cycling
Enhanced walking links in communities outside of built-up areas (e.g. Gower)	Improving or creating new walking links within and between communities outlying the 'built up area' classification.	Active travel / walking and cycling
GCRE Active travel and highway valley connections	As part of the GCRE proposal, there is the potential for the scheme to improve the active travel and highway connections in the Onllwyn area, this could be expanded to the BUA of Seven Sisters.	Active travel / walking and cycling

Intervention Name	Description including location(s)	Theme
<p>Gwendraeth Valley Line and associated Linkages and Cardi Bach and Associated Linkages</p>	<p>The Gwendraeth Valley Line runs from Cwm Mawr in the north to Pembrey in the South. There is a long term aspiration, with large amounts of public and political support, to repurpose the line as a strategic active travel route, connecting areas of significant deprivation and ex-mining communities with employment opportunities in Cross Hands to the North and Llanelli to the Southwest. Feasibility studies and concept designs have been produced and public consultation has taken place. The Cardi Bach Line has been investigated for its potential as an Active Travel route in a cross-border scheme with Pembrokeshire and Ceredigion. The line links Whitland in the south with cardigan in the North, via Crymych. Initial Feasibility studies have been undertaken and there is a large amount of public and political support for the scheme.</p>	<p>Active travel / walking and cycling</p>
<p>Improved crossings of the River Tawe for pedestrians and cyclist</p>	<p>Improving links across the River Tawe for pedestrians, and cyclists where possible, to improve connectivity and reduce severance.</p>	<p>Active travel / walking and cycling</p>
<p>Improved walking and cycling links adjacent to the M4 - J44 and J45</p>	<p>Enhancements to the walking and cycling infrastructure connecting communities across J44 and J45.</p>	<p>Active travel / walking and cycling</p>
<p>Improvements to existing walking and cycling infrastructure within the City and County of Swansea Boundary</p>	<p>Improvements, including widening and resurfacing of existing walking and cycling routes.</p>	<p>Active travel / walking and cycling</p>

Intervention Name	Description including location(s)	Theme
Key employer access packages	Key employers provide concentrations of employment.	Active travel / walking and cycling
Kidwelly Masterplan	A package of active travel improvements within Kidwelly and connecting to nearby settlements including Ferryside and Carmarthen Bay holiday park. This scheme will provide localised walking and cycling improvements to facilitate local journeys as well as the first and final mile of multimodal journeys via bus and rail.	Active travel / walking and cycling
Llandovery Masterplan	An Active Travel Masterplan has been developed for Llandovery through consultation with local residents and key stakeholders. This aims to create a network of local walking and cycling routes which allow greater active travel permeability through the town, providing access to key services including the schools, leisure centre, hospital and local high street. The scheme is proposed for implementation in the coming years through ATF.	Active travel / walking and cycling

Intervention Name	Description including location(s)	Theme
<p>Llanelli Active Travel Masterplan</p>	<p>A package of measures developed over a number of years with the aim of creating new walking and cycling infrastructure with links to key destinations such as education centres, employment/retail sites and residential developments whilst enhancing the mesh density across the whole active travel network. A key component of this masterplan is the creation of the Llanelli Spinal Route that will eventually connect Hendy all the way to Pentre Awel and the Millenium Coast Path with high quality, mostly off road active travel infrastrcuture. Planned future connections include the completion of the Black Bridge scheme and links to key developments such as the Pentre Awel, town centre and railway station. As Carmarthenshire's largest town, with the greatest density of multiple deprivation and flat topography there is a high propensity to utilise active travel methods in all local journeys. The Masterplan will link in with the planned Llanelli Interchange scheme and various strategic transport proposals for Llanelli to create a network which is not reliant on the private car for local journeys. this will also capture the commuities of Bynea and Llangennech.</p>	<p>Active travel / walking and cycling</p>

Intervention Name	Description including location(s)	Theme
Market Towns outside of BUAs	A number of Carmarthenshire's key Market Towns fall below the threshold of Built Up Areas within the Active Travel Act. Despite this, the authority recognises the importance of walking and cycling as modes of transport for these communities. This scheme will capture the delivery of demand related Highways and Footways safety improvements. We are committed to developing and delivering active travel schemes in these areas, including: Llanybydder, Llandeilo, Laugharne, Whitland and Newcastle Emlyn. Consider specifically opportunities for Llandysul to Pencader and Newcastle Emlyn via Henllan, Tywi Valley Path Linkages	Active travel / walking and cycling
Mobility Hubs P&R replacements		Active travel / walking and cycling
Neath active travel master plan	Providing active travel enhancements on circa 47 ATNM routes within the Neath town centre area. These could range from small scale changes like providing dropped kerbs and tactile paving, to larger scale changes such as the creation of new cycle tracks.	Active travel / walking and cycling
Neath and tenant canals – Active travel improvements	To deliver improvements to the walking and cycling routes alongside the Neath and Tenant Canals.	Active travel / walking and cycling
Neath to Cimla active travel route	Develop an active travel link between Neath and Cimla. This will include a new cycling link and improvements to the existing walking infrastructure.	Active travel / walking and cycling
Newbridge road bridge	Provision of an active travel route over the failing Newbridge Road bridge (grade II listed structure) including improved access to Port Talbot Docks.	Active travel / walking and cycling

Intervention Name	Description including location(s)	Theme
Port Talbot and Aberavon Active Travel Masterplan	Providing active travel enhancements on a series of routes within the Aberavon and Port Talbot areas. These could range from small scale changes like providing dropped kerbs and tactile paving, to larger scale changes such as the creation of new cycle tracks.	Active travel / walking and cycling
Progress Delivery of the Latest ATNM	Progress the design and delivery of routes identified within the Active Travel Network Map, as per our duty under the Active Travel Act.	Active travel / walking and cycling
Provision of Swansea city-wide micromobility hire scheme	Delivery or enabelment of micromobility hire schemes, to include mechanical cycles and e-bikes, with the potential to include emerging transport options, such as e-scooters (subject to trial or legislation change).	Active travel / walking and cycling
Regional Active Travel Infrastructure	Provision of a programme of active travel interventions across the region, delivering routes included in the ATNM and ensuring that Walking, Cycling and Wheeling infrastructure meets the criteria set out in the ATAG. Alongside distinct Active Travel schemes this will also include the provision of accessible infrastructure and wayfinding signage.	Active travel / walking and cycling
Regional Active Travel Monitoring and Evaluation	Ensure that the region are collectively working to a process which allows for the robust monitoring and evaluation of active travel scheme to increase propensity to travel actively. This schemes should maximise the value of capital investment on active modes across the region by ensuring that outcomes are closely monitored.	Active travel / walking and cycling
Regional Active Travel Promotion	Ensure that the region are collectively working to a process which promotes schemes to their greatest potential to increase propensity to travel actively. This schemes should produce promotional material which raises awareness and generates modal shift.	Active travel / walking and cycling

Intervention Name	Description including location(s)	Theme
Regional Cycle Supporting Infrastructure and Cycle Hire Scheme	This scheme will undertake a gap analysis of existing provision across the region to understand where there is a need for infrastructure including (but not limited to), cycle parking, bike repair stations, Ebike charging. This will also include consideration for the further roll out of cycle hire, including EBike hire at locations across the region. The scheme will consider the unique needs of the four authorities within the region whilst aiming to provide infrastructure that supports the entire network and meets the needs of those using it and future users, increasing the propensity to cycle.	Active travel / walking and cycling
Regional Scooter Trials (Urban Mobility)	Trial the development of an Scooter urban mobility scheme to provide flexible hire of Scooters for use in town centres. This would provide an alternative to the private car for shorter journeys and integrate with public transport modes to facilitate the first and final mile of journeys.	Active travel / walking and cycling
Regional Road Safety and Highway Improvement Programme	A programme of demand based interventions to provide localised road safety improvement to footways and highways within communities, upholding the sustainable transport hierarchy and prioritising pedestrians. This scheme will recognise the unique needs of the four authorities within the region and ensure that local prioritisation is applied.	Active travel / walking and cycling

Intervention Name	Description including location(s)	Theme
Regional ROWIP	Delivery of the Region's Rights of Way Improvement Plan, in particular where PROWs serve a function to cater for pedestrians and cyclists to complete utility journeys and link to the wider Active Travel network. Focusing on structures and bridges included in the plan which provide critical links and run the risk of becoming impassible and fracturing the network.	Active travel / walking and cycling
Regional Safe Routes in Communities	The ongoing development and delivery of walking and cycling schemes delivered through the Safe Routes in Communities grant, through an involved process and extensive consultation to create schemes that meet the specific needs of the Region's diverse communities.	Active travel / walking and cycling
Regional School Streets	The ongoing development of School Streets schemes which aim to create safer environments outside of schools by limiting vehicular access, in the interest of road safety and increasing the propensity of families to walk and cycle to school.	Active travel / walking and cycling
Regional School Travel Planning	Developing a unified approach across the Region, in conjunction with Sustrans, to ensure that all schools across the county have the opportunity to produce, adopt and deliver a School Travel Plan.	Active travel / walking and cycling
Regional Whole School Cycle Training and Provision of Associated Facilities	Working in conjunction with Sustrans and internal Road Safety colleagues to ensure that children at all stages of primary school are offered road safety education, across the Region. Supporting this with appropriate provision of cycle and scooter parking and parent waiting infrastructure to increase propensity to walk and cycle.	Active travel / walking and cycling
Safe Routes in Communities	Development and delivery of Safe Routes in Communities (SRiC) (Welsh Government grant funded) walking and cycling schemes.	Active travel / walking and cycling

Intervention Name	Description including location(s)	Theme
Sandfields active travel master plan	Active travel enhancements across circa 29 ATNM routes within the Sandfields area of Port Talbot. These range from small scale changes like providing dropped kerbs and tactile paving, to larger scale changes such as the creation of new cycle tracks.	Active travel / walking and cycling
St Clears Masterplan	A network of routes has previously been developed for St Clears to link to key trip attractors including education, the leisure centre, the local high street and the proposed railway station. This network also has potential to link to the proposed West Wales General Hospital site, if St Clears is confirmed as the location. Further consultation and a design review of these proposed schemes will take place in advance of a funding bid.	Active travel / walking and cycling
Tumble Masterplan	The Tumble Masterplan has been developed through consultation with local residents and key stakeholders to provide essential infrastructure for the growing residential hub of Tumble. A package of measures have been identified to produce a network for implementation. The village serves an important function locally having two schools and a thriving community sports facility. The Swiss Valley cycleway provides onward connectivity to Cross Hands in the north and Llanelli in the south. The masterplan will provide links from that route to key local trip attractors.	Active travel / walking and cycling

Intervention Name	Description including location(s)	Theme
Wildfox resort – active travel, public transport and highway connections	Multimodal improvements to the local active travel routes/NCN, public transport and highway connections to facilitate the Wildfox resort development in the Afan Valley. A proposed holiday park including adventure and wellness facilities in the Afan Valley. Proposals include approx. 570 holiday lodges, a 50-bed hotel and 15-bed apartment-hotel, indoor water park and canyoning facilities.	Active travel / walking and cycling
Bus Improvements – Road Infrastructure	Improvements to the highway for bus routes (i.e. passing bays, stopping points) throughout the county	Bus
Dredgeman's Hill Bus Priority Scheme	Transport corridor improvement between H'West and Johnston	Bus
Key Priority Bus Route Expansion	Working towards and funding the aspirational bus network which includes improvements to bus service frequency/weekend/night service for priority routes . Look at measures to resolving a drivers shortage within the area.	Bus
Long Haul Bus and Rail Station Connectivity	Provision of upgraded long haul bus routes for improved accessibility/mobility provision; improved access to Haverfordwest Rail station for buses through road modification to facility turning/parking.	Bus
Park and Ride Schemes	Johnston, New Hedges, Carew Castle to support Celtic Freeport Construction	Bus

Intervention Name	Description including location(s)	Theme
Air Quality Management Areas	Delivery of transport interventions which reducing the impact of road transport in AQMAs in Swansea.	Climate resillience
Climate resilliance of key highway infrastructure	Programme to identify network infrastructure at risk of flooding or failure due to extreme weather in order to protect sustainable transport routes between communities and key services.	Climate resillience
Killay Square	Flood alleviation measures	Climate resillience
ATNM Route 12	ATF link within Haverfordwest Town Centre Route 12	Cycling
Cardi Bach Scheme	Joint SUP between CCC and PCC, between Cardigan and Whitland vi a disused railway track.	Cycling
E-Bike Strategy	Roll-out of E-Bike scheme across the County and PCNPA	Cycling
Energy Solution Strategic Route SUP	Energy - southern strategic route, which links with Pembroke (Fingerpost to Pembroke); -link off into the cycle network which then returns to the carriageway	Cycling
Narberth to Haverfordwest MUR	SUP scheme between Narberth and Haverfordwest	Cycling
Redstone Cross - Llandewi Velfrey SUP	Scheme to link Narberth via Redstone Cross to the Llandewi Velfrey SUP network.	Cycling
Slippery Back.		Cycling
Fishguard – Ferry Port	Changes to Fishguard/Goodwick Station to improve bus/rail links.	Influencing Travel Behaviour
Milford Haven Active Travel	SUP link between Steynton - Studdolph - Johnston delivered in two phases	Influencing Travel Behaviour
Narberth - Kiln Park Rd	SUP formation along KilnPark Road	Influencing Travel Behaviour
Pembroke - Active Travel Key Schemes	Consisting of improvements in Active Travel around Pembroke; three key areas: Mill Bridge to Barrage; Mill Pond and Mill Bridge to town	Influencing Travel Behaviour

Intervention Name	Description including location(s)	Theme
Pembroke Dock - Active travel (Pennar)	Pennar connectivity active travel improvements linking to Pembroke Dock	Influencing Travel Behaviour
Pembroke Dock Shared Use Path	Safer routes for schools within Pembroke consisting of: Prospect Place, Bush Street	Influencing Travel Behaviour
Prendergast Active Travel	Improvements within Prendergast community to improve existing cyclist/pedestrian walkways; Back Lane improvements between HHVC and Prendergast Community School	Influencing Travel Behaviour
Saundersfoot Shared Use Path - Frances Road	Detailed design (25/26) and construction of SUP from Scar Farm Holiday Park to Coppet Sands (26/27).	Influencing Travel Behaviour
Saundersfoot Shared Use Path - Sandy Hill	Preferred option design, land ownership de-risking and public consultation for Sandy Hill section of Saundersfoot SUP route.	Influencing Travel Behaviour
Saundersfoot Shared Use Path - Stammers	Phased construction of SUP and traffic management including Cambrian Place junction alterations to support café culture.	Influencing Travel Behaviour
St Dogmaels SUP Route	SUP and pedestrianisation scheme linking St Dogmaels to Poppit Sands; consisting of six connections	Influencing Travel Behaviour
Tenby - Croft to The Glebe	Active travel improvements including detailed design and construction between The Glebe and The Croft	Influencing Travel Behaviour
Tenby - Glebe to Green	Active travel improvements including detailed design and construction between The Glebe to The Green	Influencing Travel Behaviour
Tenby - Golf Course	SUP route through Tenby Golf Course	Influencing Travel Behaviour
Tenby - Penally (Heywoods Lane)	SUP formation along Heywoods Lane	Influencing Travel Behaviour
Tenby - Penally (Marsh Road)	SUP formation along Marsh Road (between Leisure Centre and Marsh Green).	Influencing Travel Behaviour

Intervention Name	Description including location(s)	Theme
Tenby - The Clicketts	SUP formation along The Clicketts	Influencing Travel Behaviour
Celtic Freeport Feasibility Studies	Series of feasibility studies within the proposed Celtic Freeport to assess implications of tax sites and strategic development sites	Masterplan / Access Package
Pembrokeshire Travel Corridor	New travel corridor linking A4075/A477 with B4319 around Pembroke; WelTAG Stage 1 and 2 work. To support Celtic Freeport development.	Masterplan / Access Package
Air Quality Management Areas - Transport Interventions	Delivery of transport interventions which reducing the impact of road transport in AQMAs in Swansea.	Multi-modal scheme
Ammanford Strategic Transport Interchange	Proposed developments in the Town Centre of Ammanford may necessitate the redevelopment of the Bus Station. This affords an opportunity to provide better connectivity between bus and rail, as well active travel infrastructure to connect to the wider Amman Valley Cycleway which provides an off-road facility from Brynamman in the North East to Pantyffynnon in the South West. This scheme will aim to increase the propensity of those living/working/studying in Ammanford and the wider Amman Valley to travel sustainably. This scheme may also consider amendments to the existing railway line to relocate Ammanford Railway Station to form part of the South West Wales Metro and better connect Ammanford with Swansea.	Multi-modal schemes
Bryntywod - Felindre upgrades to access and bridge	A scheme to complement delivery of wider Felindre ambitions, providing access and bridge upgrades from Bryntywod.	Multi-modal scheme

Intervention Name	Description including location(s)	Theme
Burry Port Strategic Transport Interchange	There has already been significant investment in Burry Port to provide seamless bus/rail integration and ensure that the existing interchange is linked to the millennium coastal path active travel facility. This scheme will provide further expansion and improvements which will support the proposed turn-back facility to be introduced by TfW/Network Rail as part of the South West Wales Metro.	Multi-modal schemes
Carmarthen Town Access Improvements	A cohesive approach across major employers and trip attractors within Carmarthen across the public and private sector. Working in conjunction with Hywel Dda and other major employers. Aimed at reducing reliance on the private car. This will also specifically capture improvements in the Pibrwylwyd/Pensarn area to unlock large scale development. this scheme will also consider the seasonality of traffic flow within and through carmarthen, noting multiple annual peaks and he impacts of trip attractors and their travel management plans on the wider network. as well as targeting local roads this scheme will consider all modes and lobby rail and trunk road agencies.	Multi-modal schemes
Cockett Station Access	Improved access for all modes to enable interchange at the proposed Cockett Station	Multi-modal schemes
Community Connectivity	Programme aimed at improving access by walking, cycling and wheeling to sustainable transport nodes and identifying gaps in provision.	Multi-modal schemes

Intervention Name	Description including location(s)	Theme
<p>Cross Hands Development Site Sustainable Transport Facilities (Amman and Gwendraeth Valleys)</p>	<p>An integrated approach to supporting the expanding employment and retail sites in Cross Hands, including proposed major investment which will generate additional HGV/LGV movements and a large number of accessible job opportunities for the local community. The scheme will consider sustainable transport solutions including active travel, public and demand responsive transport and car sharing schemes to limit the impact on the wider network. The scheme will also consider the dual role of Cross Hands as a commuter hub where residents regularly access the strategic road network to commute within and outside of the region for employment and education. Possible solutions to reduce dependency on single use car journeys for this community may include car share incentives, increased bus services and DRT/Car Clubs. This scheme will also capture wider improvements across the Gwendraeth and Amman Valleys (significant areas of multiple deprivation) to maximise the benefits of investment on the wider area and ensure sustainable access to employment opportunities. This scheme will also capture the creation of an express bus service between the communities of Llanelli, Cross Hands and Hendy to create PT connectivity where it is currently lacking. This will also capture Phase 2 of the Ammanford Economic Distributor Road and Phase 3 of the Cross Hands Economic Link Road.</p>	<p>Multi-modal schemes</p>

Intervention Name	Description including location(s)	Theme
Fabian Way Corridor Enhancements	A programme of works, predominantly focused on the replacment of Baldwins Bridge, subsequently enabeling extension of Langdon Road to Baldwins Crescent and the A483. A new link road would be constructed as part of this scheme. This programme of works could progress alongside and complement the tidal lagoon and other developments along the Fabian Way corridor, or in isolation.	Multi-modal scheme
Fabian Way Corridor Enhancements (including Tidal Lagoon project)	A programme of works, predominantly focused on the replacment of Baldwins Bridge, subsequently enabeling extension of Langdon Road to Baldwins Crescent and the A483. A new link road would be constructed as part of this scheme. This programme of works could progress alongside and complement the tidal lagoon and other developments along the Fabian Way corridor, or in isolation.	Multi-modal scheme
Haverfordwest - Milford Haven (Incl Freeport)	Includes Merlins Bridge junction at Haverforwest At each location road safety, amenity and capacity issues exist Rail line has restricted capacity and services are limited Bus service runs at 30mins intervals	Multi-modal scheme
Killay Square Flood Alieivation	A scheme to alieviate the community severance caused by flooding, impacting public transport and wider connectivity of the community.	Multi-modal scheme
Landore Park and Ride replacement / Mobility Hubs	Alternative facility for Landore Park and Ride and identification of supplementary mobility hub locations.	Multi-modal schemes
Landore Station Access	Improved access for all modes to enable interchange at the proposed Landore Station	Multi-modal schemes

Intervention Name	Description including location(s)	Theme
<p>Llanelli Economic, Education and Employment Access Improvements</p>	<p>A scheme focused on supporting the wide range of development being undertaken in Llanelli currently, including but not limited to, Pentre Awel, Parc trostre/Parc y scarlets, transforming tyisha, The Llanelli Interchnage. The scheme will create a transport infrastrucure is in place which attracts inward investment and improves the economic viability and sustainability of Llanelli as a principle town. The scheme will ensure the infrastructure is in place to facilitate the increased transport demand. This will aim to provide links to the existing Rail and Bus Stations, proposed transport interchange, Millennium Coastal Path, Llanelli Spinal Active Travel Route and the strategic road network. The scheme will consider the dualling of the A4138.</p>	<p>Multi-modal schemes</p>
<p>Llanelli Multimodal Interchange</p>	<p>Land has been acquired to the South of Llanelli Railway Station to construct a transport interchange which will allow buses to directly serve the Station. Local buses are currently unable to service the station due to constraints on the network including the level crossing on Station Road, and Llanelli Bus Station is circa 1 mile from the Rail Station. The scheme will build in active travel measures, connecting to improvements in the immediate vicinity which provide connectivity across the town and wider area. It will also provide provision for taxis, ULEVs, community and DRT and PRM parking.</p>	<p>Multi-modal schemes</p>

Intervention Name	Description including location(s)	Theme
Llanelli Urban and Coastal Belt Junction Improvements	There is a high level of public and political demand for a scheme to improve multi modal access to the wider Llanelli area. A package of measures to improve public transport journey times, providing a safer and more accessible environment for Active Travel modes by creating an environment that support expeditious highway movement and in doing so provide for inter and intra connectivity improvements for Llanelli, from the M4 in the North, to the Swansea border in the East and the Pembrey Peninsula in the West. Llanelli is Carmarthenshire's largest town and includes some of Wales' most deprived areas. This scheme will seek to utilise the sustainable transport hierarchy to provide a network which delivers access to employment and key services for communities within Llanelli and facilitates economic growth within the town. This will specifically include (but not be limited to) - improvements on Sandy Road and associated junctions, Talyclun, Trostre and Halfway, Pembrey Peninsula.	Multi-modal schemes
Llangyfelach to Swansea Sustainable Transport Corridor	A scheme to enhance and introduce multi-modal sustainable transport options along a key corridor into Swansea city centre. The extents of the scheme are between Llangafelach (B4489) and Dyfatty junction (Bridge Street).	Multi-modal scheme
Morrison Hospital Link Road	Support with delivery of Morrison Hospital (NHS funded) link road.	Multi-modal scheme

Intervention Name	Description including location(s)	Theme
Nant y Caws Development Access Improvements and Sustainable Transport Hub	Development of a major employment site, incorporating Waste, recycling, circular economy and green skills facilities and associated depot facilities (including potential for a strategic bus hub and vehicle maintenance facilities) alongside a Regional EV Charging Hub with renewable energy generation for the public sector. Proposals will consider a multimodal approach, promoting sustainable and active travel options.	Multi-modal schemes
Neath Integrated transport hub	Provision of a new bus and rail interchange at Neath Railway Station to provide improved opportunities for integrated journeys.	Multi-modal schemes
Neath - Port Talbot - Swansea	Major link through the main urban areas of the region. Key corridor for access to the Freeport and major developments M4 Junction 43 capacity limitation	Multi-modal scheme
Park and Rail Gowerton Station	Implementation of a park and rail facility and multi-modal interchange facilities at Gowerton train station	Multi-modal schemes
Park and Rail Llansamlet Station	Implementation of a park and rail facility and multi-modal interchange facilities at Llansamlet train station	Multi-modal schemes
Pontarddulais Station Access	Improved access for all modes to enable interchange at Pontarddulais Station	Multi-modal schemes
Public Transport Enhancements along 'X' bus routes between Swansea and neighbouring authorities	Public transport improvements within the boundaries of the City and County of Swansea that facilitate journeys between Swansea and Carmarthenshire, and Swansea and Neath Port Talbot.	Multi-modal schemes
Regional Aerodrome and Out of Region Airport Access	Measure and policy to (i) allow safe access to current SWW aerodromes (ii) to support access to international gateways (Cardiff, Heathrow and Bristol airports for pax and freight	Multi-modal schemes

Intervention Name	Description including location(s)	Theme
Regional Behavioural Change Programme	A programme of measures aimed at encouraging ore sustainable use of the transport network. This will include (but not be limited to) working with employers in the public and private sector to provide workplace travel planning, educational travel planning, access to healthcare, specific travel planning for those with additional learning needs and any other multimodal behavioural change initiatives to support the delivery of capital schemes and maximise the value of investment.	Multi-modal schemes
Regional Freeport facilitation package	Measures to facilitate delivery of the Freeport. Likely to include localised road improvement, new / additional bus services, AT schemes and a travel brokerage scheme	Multi-modal schemes
Regional Road Safety Training Programme	Develop and implement an effective Road Safety Training programme which recognises the needs of the most vulnerable road users, including the young and old. This should include the roll-out of Road safety education at all levels including specific training programmes for motorcyclists.	Multi-modal schemes
Regional Transport/Land Use Planning Initiative	Policy based framework for the integration of land use planning with transport. This is designed to support the development of the SDP and will include policy and scheme definition in the SDP context	Multi-modal schemes
Scurlage to Llandewi Corner Flood Alieviation	A scheme to alieviate the community severance caused by flooding, impacting public transport and wider connectivity of the community.	Multi-modal scheme
Supporting infrastructure for Swansea Bay and South West Wales Metro schemes	Schemes or works providing supporting infrastructure to enable rail enhancements through new stations / services proposed as part of the Swansea Bay and South West Wales Metro	Multi-modal scheme

Intervention Name	Description including location(s)	Theme
Swansea - Carmarthen via Llanelli (and Pembrokeshire)	This corridor forms main link between these key locations Includes communities away from the existing rail corridor.	Multi-modal scheme
Swansea - Mumbles	Significant congestion at peak and holiday times. Currently 3 buses per hour Redevelopment of waterfront has significantly increased pedestrian movement at Swansea end of corridor	Multi-modal scheme
Swansea - Pontarddulais - Ammanford	The corridor comprises A48 and A483 Both major towns are on the proposed SWW metro route from Ammanford to Swansea via Neath Ammanford to Swansea via Neath	Multi-modal scheme
Swansea Northern City Link Sustainable Transport Corridor	A scheme to enhance and introduce multi-modal sustainable transport options along a key corridor into Swansea city centre. The extents of the scheme are between Cadle and High Street station, including Dyfatty Interchange.	Multi-modal schemes
Swansea Northern City Link Sustainable Transport Corridor	A scheme to enhance and introduce multi-modal sustainable transport options along a key corridor into Swansea city centre. The extents of the scheme are between Loughor Bridge and High Street station, including Dyfatty junction.	Multi-modal scheme
Swansea Valley Sustainable Transport Corridor	A scheme to enhance and introduce multi-modal sustainable transport options along a key corridor into Swansea city centre. The extents of the scheme are between Clydach and Mumbles.	Multi-modal scheme
Swansea West Sustainable Corridor	Sustainable transport improvements to include active travel provision and enhancements to public transport along the A4118 between Killay and Swansea city centre,	Multi-modal schemes

Intervention Name	Description including location(s)	Theme
Swansea West Sustainable Transport Corridor	Sustainable transport improvements to include active travel provision and enhancements to public transport along the A4118 between Killay and Swansea city centre,	Multi-modal scheme
Tourism Access Package	Tourism is worth £1.2bn a year to the regional economy 2 National Parks encourage sustainable access Proposed leisure complex in Afan Valley Tenby P&R for summer months Pembrokeshire Coast summer bus service	Multi-modal scheme
Town access packages	Access to town centres is key to local economic activity. Health Boards adopting town centre primary care model	Multi-modal schemes
Trial / rollout of AI and emerging transport technologies to support the Swansea Urban Traffic Management and Control System	Enable efficient transport management by using data and emerging transport technologies to improve journey time reliability across the network, specifically for public transport.	Multi-modal scheme
West Wales General Hospital Transport Access	A scheme to support the progression of HDUHB's proposed new West Wales General Hospital on either of the proposed sites in the west of the county. A significant need in transport demand across all modes will necessitate significant investment at either site to ensure the impact on the wider network is minimised and that active and sustainable modes are prioritised wherever possible.	Multi-modal schemes

Intervention Name	Description including location(s)	Theme
Coastal Access Strategy	Improved access to the coast in sustainable manner	Network Resilience
East West Corridor Network Improvements	Series of improvements on the A40, A477, A48 to improve congestion and traffic flow; feasibility studies to look at 2 + 1 works on the Trunk Roads	Network Resilience
East West Corridor Network Improvements	Series of improvements on the A40, A477, A48 to improve congestion and traffic flow; feasibility studies to look at 2 + 1 works on the Trunk Roads	Network Resilience
Haverfordwest Northern Travel Corridor	Potential northern travel corridor linking A40 to A487, to provide a northern relief road for Haverfordwest to St Davids	Network Resilience
Narberth HGV diversion scheme	GV diversion around Narberth via Kiln Park Road	Network Resilience
Newgale Coastal Adaptation	Continued support for the Newgale Coastal Adaptation programme and road relief	Network Resilience
Pembroke - West Hill Widening	Widening of West Hill, Pembroke, to enable HGV traffic flow to support Celtic Freeport future development	Network Resilience

Intervention Name	Description including location(s)	Theme
Bus Priority Schemes	Identification of network issues which contribute to poor journey time reliability, passenger weighted delay and design and implementation of improvement measures.	Public transport improvements (RTP delivery)
Bus Shelter / Waiting Enhancements	Passenger Waiting facilities	Public transport improvements (RTP delivery)
Bus Shelter / Waiting Facilities Upgrades across the City and County of Swansea	Enhancement of passenger waiting facilities across the network.	Public transport improvements (RTP delivery)
Carmarthen to Swansea via Llanelli Bus Corridor Enhancements and Service Improvements (X11/X13 service)	Increased frequencies on the X11/X13 services which run between Carmarthen, Ammanford, Llanelli and Swansea. These are two of the region's most well used services and provide connectivity between primary urban areas, offering the opportunity for modal shift from the private car. Increased frequencies on these services would make them a more feasible alternative to the private car, coupled with journey time reliability improvements cited in the RTP. Proving the necessary infrastructure to increase journey time reliability on these routes would make them more popular, and therefore more commercially viable, in turn increasing operator appetite to increase service frequency, creating a positive multiplier effect. This scheme will also seek to improve infrastructure along the corridor.	Public transport improvements (RTP delivery)

Intervention Name	Description including location(s)	Theme
Cockett Station Interchange and Supporting Infrastructure	Improvements at and in the vicinity of the station (if established), to include enhanced pedestrian and cycle access, suitable cycle parking, interchange facilities and associated infrastructure, enhancing the passenger experience across all modes.	Public transport improvements (RTP delivery)
Cymmer bus interchange	Improvements to the bus interchange at Cymmer	Public transport improvements (RTP delivery)
Demand Responsive Transport	Provision of DRT and community transport to serve areas of rurality, and intergration where possible with existing transport services.	Public transport improvements (RTP delivery)
Develop a Community/DRT strategy and progress delivery	Develop and implement a demand responsive transport and community transport strategy which identifies how the modes can support timetabled bus services to create an accessible public transport system which meets the specific needs of Carmarthenshire's diverse communities. This will include the potential establishment of a Western DRT Zone, Tywi valley DRT zone, the continuation of the Bwcabus/Fflecsi project, additional DRT Zones and the implementation of a single, centralised Community transport/DRT Hub.	Public transport improvements (RTP delivery)
EV Bus Charging Hubs at key nodes across Swansea	Support introduction of ULEV bus with supporting charging infrastructure, where appropriate.	Public transport improvements (RTP delivery)
Gorseinon Bus Station Improvements	Improvements at and in the vicinity of the station, to include enhanced pedestrian and cycle access, suitable cycle parking, interchange facilities and associated infrastructure, enhancing the passenger experience across all modes.	Public transport improvements (RTP delivery)

Intervention Name	Description including location(s)	Theme
Gowerton Railway Station Interchange Improvements / Public Transport Hub	Improvements at and in the vicinity of the station, to include enhanced pedestrian and cycle access, suitable cycle parking, interchange facilities and associated infrastructure, enhancing the passenger experience across all modes.	Public transport improvements (RTP delivery)
Improved bus services & associated infrastructure	Improving sustainable transport access across Swansea, including key trip attractors and tourism destinations, enhancing service provision and/or infrastructure to improve the passenger journey.	Public transport improvements (RTP delivery)
Improved public transport services and associated infrastructure	Improving sustainable transport access across Swansea, including key trip attractors and tourism destinations, enhancing service provision and/or infrastructure to improve the passenger journey.	Public transport improvements (RTP delivery)
Introduce Demand Responsive Transport in areas of rurality (e.g. Gower / Mawr)	Provision of DRT and community transport to serve areas of rurality, and intergration where possible with existing transport services.	Public transport improvements (RTP delivery)
Key Corridor Improvements	Investigate the need for, and implement, improvements across the wider strategic highway network, identifying opportunities to improve conditions for public transport and generate modal shift.	Public transport improvements (RTP delivery)
Landore Park and Ride Replacement	Alternative facility for Landore Park and Ride and identification of supplementary mobility hub locations.	Public transport improvements (RTP delivery)
Landore Station Interchange and Supporting Infrastructure	Improvements at and in the vicinity of the station (if established), to include enhanced pedestrian and cycle access, suitable cycle parking, interchange facilities and associated infrastructure, enhancing the passenger experience across all modes.	Public transport improvements (RTP delivery)

Intervention Name	Description including location(s)	Theme
Llansamlet Railway Station Interchange and Supporting Infrastructure	Improvements at and in the vicinity of the station, to include enhanced pedestrian and cycle access, suitable cycle parking, interchange facilities and associated infrastructure, enhancing the passenger experience across all modes.	Public transport improvements (RTP delivery)
Morrison Public Transport Interchange	Improvements at and in the vicinity of the station, to include enhanced pedestrian and cycle access, suitable cycle parking, interchange facilities and associated infrastructure, enhancing the passenger experience across all modes.	Public transport improvements (RTP delivery)
Mumbles Public Transport Interchange	Improvements at and in the vicinity of the station, to include enhanced pedestrian and cycle access, suitable cycle parking, interchange facilities and associated infrastructure, enhancing the passenger experience across all modes.	Public transport improvements (RTP delivery)
Pontarddulais Railway Station Interchange / Public Transport Hub	Improvements at and in the vicinity of the station, to include enhanced pedestrian and cycle access, suitable cycle parking, interchange facilities and associated infrastructure, enhancing the passenger experience across all modes.	Public transport improvements (RTP delivery)
Port Talbot bus station	Improvements to the bus station at Port Talbot to improve journeys by public transport and facilitate economic growth in the town.	Public transport improvements (RTP delivery)
Public Transport Enhancements along 'X' bus routes between Swansea and neighbouring authorities	Public transport improvements within the boundaries of the City and County of Swansea that facilitate journeys between Swansea and Carmarthenshire, and Swansea and Neath Port Talbot.	Public transport improvements (RTP delivery)
Real Time Passenger information	Develop and implement RTPi across Swansea, maintaining consistency with neighbouring authorities.	Public transport improvements (RTP delivery)

Intervention Name	Description including location(s)	Theme
Real Time Passenger Information	Develop and implement RTPI across Swansea, maintaining consistency with neighbouring authorities.	Public transport improvements (RTP delivery)
Regional Bus Infrastructure Improvements	A package of region-wide improvements to bus waiting infrastructure to deliver a consistent and recognisable brand and ensure the public transport is accessible to all, increasing propensity to travel by sustainable modes.	Public transport improvements (RTP delivery)
Regional Driver Training Programme	Develop a regional programme to recruit and train drivers to address existing shortfalls and future proof the industry. This scheme would be developed in partnership with operators to identify the specific challenges facing the industry and ensure that those challenges were addressed by tailored training programmes.	Public transport improvements (RTP delivery)
Regional Mobility Hubs	Develop a Mobility Hub strategy which identifies opportunities to integrate ULEV charging with other modes, and deliver localised mobility hubs within communities, which promote sustainable travel options.	Public transport improvements (RTP delivery)
Regional Real Time Passenger Information System	Develop and implement an RTPI strategy which is consistent with the wider region and allows for the introduction of RTPI across the bus network.	Public transport improvements (RTP delivery)
Regional School Transport Initiative	In light of bus franchising, develop a sustainable model for the delivery of education transport across the region, recognising the specific needs of the region's diverse communities and addressing matters including SEN education transport.	Public transport improvements (RTP delivery)

Intervention Name	Description including location(s)	Theme
Swansea Central Railway Station Interchange Improvements	Improvements at and in the vicinity of the station, to include enhanced pedestrian and cycle access, suitable cycle parking, interchange facilities and associated infrastructure, enhancing the passenger experience across all modes.	Public transport improvements (RTP delivery)
Swansea Valley Bus Corridor	Public transport enhancements to include interchange facilities, journey time and reliability improvements.	Public transport improvements (RTP delivery)
Urban bus priority in key areas of high passenger-weighted delay	Identification of network issues which contribute to poor journey time reliability, passenger weighted delay and design and implementation of improvement measures.	Public transport improvements (RTP delivery)
Windsor road bus lane	Provision of a bus lane on Windsor Road in Neath	Public transport improvements (RTP delivery)
Zero Emission Bus	Enabling the delivery of a decarbonised public transport system.	Public transport improvements (RTP delivery)
Zero Emission Bus	Enabling the delivery of a decarbonised public transport system.	Public transport improvements (RTP delivery)

Intervention Name	Description including location(s)	Theme
Improved Rail Service to Pembrokeshire	Increased rail service to 1 train per hour for all stations throughout the year.	Rail
Lamphey Rail Sidings	Improved rail sidings at Lamphey to support freight delivery for Celtic Freeport	Rail
Milford Haven Public Transport Interchange	Rail improvements for increased rail capacity and bus/cycle links	Rail
Pembroke Dock Public Transport Interchange	Highway improvements to link through to the Rail station and provide better modal shift (bus points)	Rail

DRAFT

Intervention Name	Description including location(s)	Theme
Biodiversity Net Gain and Highway Verges	Continuuig to expand the biodiversity of highway owned land, creating and maintaining habitats in highway verges and alongside active travel facilities.	Resilience schemes
Capacity improvements - Neath college and surrounding area	Amelioration of significant congestion junction in Neath, currently constraining	Resilience schemes
Cimla Road Junction - Neath town Centre capacity improvements	Amelioration of significant congestion junction in Neath, currently constraining	Resilience schemes
Climate Resilience of Key Highway Infrastructure	A programme to identify and address infrastructure along the highway network which has failed or is at risk of damage from extreme weather. To deliver improvements which improve the resilience of infrastructure. This will be comprised of a risk-based prioritised and coordinated programme of cross-asset projects, using a data driven prioritisation model supported by leading edge AI survey and software systems.	Resilience schemes
Fabian way drainage improvement scheme	Drainage improvements to prevent the carriageway from flooding.	Resilience schemes
Harbourside ABP (freeport) capacity improvements	Improvement to access to the freeport development within the region, to enable sustainable travel to the large scale development.	Resilience schemes

Intervention Name	Description including location(s)	Theme
Regional Asset Management Strategy and Delivery	Development and implementation of a Regional approach to Asset Management including the recording and assessment of the network as well as the delivery of climate resilience and upgrade schemes. The scheme will consider the unique needs of the four authorities within the region and approaches taken across those authorities. It will aim to take advantage of synergies and economies of scale to bring benefits to all of the region and maintain the highway and structural asset portfolio in the face of climate change and wider challenges. this will recognise the role of the highway network across the region as a lifeline to many and the role it plays in deep rural connectivity.	Resilience schemes
Rutherglen roundabout / Seaway Parade capacity improvements (freeport)	To accommodate the increase in capacity on the highway network following the freeport development a review of the existing highway network to determine multi modal improvements.	Resilience schemes
Sub-Standard Bridges Programme and Bridges Improvement Package	Economic Activity Social Inclusion and Environmental protection/resilience are key drivers associated with the need to ensure that weight restrictions and sub standard bridge structures do not result in community severance, long detours for damaging and polluting HGV's and importantly that Public Transport and Active Travel provision at and between these communities is not compromised and upgrade up to 40t capacity. this scheme will address a backlog of critical structural maintenance.	Resilience schemes

Intervention Name	Description including location(s)	Theme
Lower Town Fishguard	Footway improvements, especially over the bridge, route through trunk road, as active travel improvements.	Road (improvement)
Prendergast Roundabout	Reconfiguration of Prendergast Cardigan Road junction to mini-roundabout	Road (improvement)
Salutation Square Congestion	Active Travel and Junction Capacity Improvements through Haverfordwest, focussing around Salutation Square	Road (traffic management)
Delivery of curriculum linked Road Safety training in all schools	Delivery of training, ensuring that pupils at all stages are offered road safety education, across Swansea.	Road Safety
Road Safety Footway and Highway Improvement Programme	A programme of demand based interventions to provide localised road safety improvement to footways and highways within communities, upholding the sustainable transport hierarchy and prioritising pedestrians.	Road Safety
Assess and address the structural integrity of Murray Street Car Park	Assess and address the structural integrity of Murray Street Car Park.	Roads and parking (RTP delivery)
Baglan Energy Park infrastructure	Infrastructure to enable the expansion of the employment area at Baglan Energy Park and enable employees to travel by sustainable modes	Roads and parking (RTP delivery)
Coed Darcy – Southern access road	New access road and bridge linking the Coed Darcy housing development to the highway and active travel network	Roads and parking (RTP delivery)
Cymmer carriageway improvements	Carriageway improvements to enable larger vehicles to access the villages of Glyncoerrwg and Abercregan following the closure of the failing Cymmer bridge. (Bridge replacement / severance scheme)	Roads and parking (RTP delivery)

Intervention Name	Description including location(s)	Theme
Develop and deliver a Major Asset Renewal Programme for the Strategic Road Network in Carmarthenshire	Develop and deliver a Major Asset Renewal Programme for the Strategic Road Network in Carmarthenshire	Roads and parking (RTP delivery)
Highway Network Infrastructure Improvements	Identification, design and implementation of network infrastructure improvements.	Roads and parking (RTP delivery)
North Carmarthenshire Rural Road Safety Pinchpoints	Improvements to address pinch points and improve route conditions between A484 Carmarthen, Newcastle Emlyn, Cenarth and Cardigan, A485 Alltwalis, Windy Corner and Lampeter and along the A482 between Llanwrda and Lampeter.	Roads and parking (RTP delivery)
Port Talbot hub links to SWWITCH harbour way	Improved multi modal infrastructure between Port Talbot Transport Hub and the development area within Harbour side.	Roads and parking (RTP delivery)
Regional Approach to Biodiversity Net Gain and Highway Verges	Continuing to expand the biodiversity of highway owned land, creating and maintaining habitats in highway verges and alongside active travel facilities.	Roads and parking (RTP delivery)
Regional Approach to Park and Ride	Park and ride sites for town / city centres and key employment locations / tourism hotspots.	Roads and parking (RTP delivery)
Regional Bus Journey Time Reliability Improvements	Identify pinch points across regional corridors which are creating poor journey time reliability outcomes for public transport. Deliver a package of measures to address these pinch points, to be delivered in conjunction with neighbouring authorities to maximise the benefit along the entire routes. This package may include measures such as bus lanes, junction redesign and priority based measures.	Roads and parking (RTP delivery)

Intervention Name	Description including location(s)	Theme
Regional Bypass Approach	Local congestion locations and locations of safety concerns (note specific schemes e.g. Llandeilo by pass listed below) Est max of 2 – 4 individual schemes across the region	Roads and parking (RTP delivery)
Regional Car Parking Strategy	A package of measures aimed at assessing current supply and demand across the region, acknowledging the unique challenges faced by specific locations within the four authorities. The scheme will consider options for incentivising sustainable transport through provision and pricing of parking as well as maintaining economic growth across the region and understanding where parking is required to facilitate longer range multimodal journeys.	Roads and parking (RTP delivery)
Regional HGV Strategy and delivery	Measures to ensure HGV movements 'add value' to the region and to reduce their community impacts. Measures could include 1. new roadside facilities 2. routing map and promotion 3. Selective local improvement on HGV suitable routes to facilitate movement of HGVs	Roads and parking (RTP delivery)
Regional Review of 20mph speed limit	A review of the blanket 20mph speed limit based on public response, acknowledging the unique character of each of the four authorities within the region and the localised challenges faced.	Roads and parking (RTP delivery)
Regional Road Capacity Management Programme	Programme of road management measures to reduce road capacity for private cars with locations TBC or to affect the balance of cost between private and public transport in appropriate circumstances	Roads and parking (RTP delivery)
Regional Road Safety Plan following Update of Road Safety Framework for Wales	Develop a Regional Road Safety plan to give local context to the Road Safety Framework for Wales.	Roads and parking (RTP delivery)

Intervention Name	Description including location(s)	Theme
Regional Traffic Signals Programme	Programme to enhance / provide smart control and UTC in urban areas	Roads and parking (RTP delivery)
Roads rehabilitation programme to achieve baseline steady state condition levels	A package of measures to maintain the condition of the highway across the county, providing rural connectivity and preventing major decline. Improve life cycle planning for highway assets by investing in preventative treatments to reduce costs for future generations. Increase use of low carbon materials and construction methods to help meet Net Zero targets.	Roads and parking (RTP delivery)
Intervention Name	Description including location(s)	Theme
Cross boundary corridor improvements	Cover routes into Ceredigion, Powys, Bridgend and Rhondda Cynon Taff that are not trunk roads	Strategic Schemes
Fabian Way Hydrogen Bus Hub	Delivery of a hydrogen refuelling bus hub on Fabian Way, working with key partners to enable delivery.	Strategic schemes (third party delivery)
Junction 43, M4 improvements	Congestion reduction measures on the strategic highway network	Strategic schemes (third party delivery)
Llandeilo Eastern Bypass	Support WG to facilitate delivery on the long standing commitment to deliver The Llandeilo Eastern Bypass, thereby improving journey time reliability on the Swansea to Manchester Trunk Road, improving air quality safety and social, environment and economic conditions in Llandeilo Town.	Strategic schemes (third party delivery)

Intervention Name	Description including location(s)	Theme
St Clears Railway Station Reopening	Carmarthenshire County Council have developed a package of integration elements including bus service recommendations, infrastructure improvements and active travel measures, as well as an integrated multi modal interchange to support the reopening of St Clears Railway Station, to a WeITAG stage 3. We are open to support TfW and Network rail in the reopening of the station and deliver the supporting elements. We will continue to lobby for the station reopening as a local and regional priority. The need for this station will be exacerbated should St Clears be chosen as the site of the new West Wales General Hospital.	Strategic schemes (third party delivery)
Station Facility and Integration Upgrades	A package of improvements to stations across the SWML and HOWL to improve passenger experience, accessibility and integration with other modes, as well as upgrades to signalling, tracks and level crossings to improve reliability to services and future-proof the network. This will specifically also include improvements at Whitland Railway station.	Strategic schemes (third party delivery)

Intervention Name	Description including location(s)	Theme
Regional DRT, CT, Car Clubs and Rural Mobility	A programme of measures to assess the need for, develop and deliver a transport system that can cater for door to door, sustainable journeys across the region. This will capture both urban and rural areas where there is a specific need for greater transport connectivity which cannot be satisfied by the timetabled bus network. the scheme will work in conjunction with the third, private and voluntary sectors, as well as public sector partners to deliver a fit for purpose solution for those across the region who are the most deprived in terms of transport.	Taxi and community transport
EV Bus Charging	Progress studies into Zero Emission bus provision,	ULEV
EV Charging Infrastructure	Delivery of electric vehicle charging infrastructure on council land at key locations, complementing private commercial operators. Engage and trial with on-street residential trials, and install chargepoints within residential areas, on-street or within council car parks, providing community charging hubs.	ULEV
Fabian Way (Amazon gateway site) – hydrogen / electric service	Hydrogen and EV charging facility	ULEV
Fleet Conversion / Charging	Continue work with fleet operators into conversion of existing vehicle fleets	ULEV
Hydrogen Bus Hub	Scheme for Hydrogen refuelling hub on Fabian Way in connection with Hydrogen bus pilot	ULEV
Hydrogen Infrastructure & Grid Improvements - Energy	Hydrogen Infrastructure and Pipeline improvements to increase hydrogen production and use within Pembrokeshire. Improvements to National Grid with regards to future development in Pembrokeshire for both residential and Infrastructure. Seek for Hydrogen buses.	ULEV

Intervention Name	Description including location(s)	Theme
Installation of 'fast' EV chargepoints in Swansea Council car parks, and on-street district centre hubs	Installation of 'fast' chargepoints on council owned and operated land, including within council car parks and in parking bays adjacent to shopping districts in smaller communities.	ULEV
Installation of on-street residential chargepoints on or in the vicinity of residential areas in Swansea	Installation of on-street chargepoints in, or in the vicinity of, residential properties where a lack of off-road parking is prominent. This includes both placement on the highway in appropriate recharging bays, or in designated residential parking areas adjacent to a residential area.	ULEV
Installation of 'rapid' EV chargepoints adjacent to key transport corridors in Swansea	Installation of 'rapid' EV chargepoints at key locations providing 'top-up' charging in central Swansea to accommodate private vehicle owners and taxi operators, as well as 'rapid' chargers installed in close proximity to key transport corridors or destinations.	ULEV
MREC hydrogen refuse vehicle	MREC hydrogen refuse vehicle	ULEV
MREC transfer station EV charging points for waste vehicles	MREC transfer station EV charging points for waste vehicles	ULEV
On street residential charge points	Progress On Street Residential Trials, Street lighting renewals to facilitate chargepoints?	ULEV
Regional Bus Fleet Decarbonisation and associated infrastructure	A package of measures aligning with existing TfW bus decarbonisation programme aimed at phasing out older and less efficient vehicles in favour of lower carbon alternatives. This may include the purchase of vehicles and/or the development of supporting infrastructure.	ULEV

Intervention Name	Description including location(s)	Theme
Regional Public Sector Fleet Decarbonisation	Delivery of a consistent approach to decarbonising public sector fleet by working in conjunction with public sector partners. This scheme will deliver a robust and fit for purpose ULEV charging network across the region through local authorities and their public sector partners, giving a more robust charging infrastructure. The scheme will also include the purchase of ULEV vehicles to facilitate the transition to a decarbonised fleet and provide the relevant upskilling of staff and facilities to accommodate more modern vehicles.	ULEV
Regional ULEV Behavioural Change Programme	Development of a behavioural change programme based on the COM-B approach and in doing so informing and empowering the public to transition to ULEV where real or perceived barriers exist	ULEV
Regional ULEV Charging Programme (Private Vehicles)	The delivery of an enhanced ULEV charging network across the region including (but not limited to) specific studies and implementation thereof On-Street Charging, Rapid Hubs, Workplace Charging, Destination Charging, Railway Station Charging, School and Community Charging. This scheme will also explore opportunities to decarbonise power supplies for the charging network.	ULEV
Regional Zero Emission Taxi Strategy	The development of a regional strategy to encourage the introduction of zero emission vehicles into taxi fleets, working in conjunction with the private sector and understanding the use of taxis within local authority operations.	ULEV
ULEV - Charging Programme	Delivery of Destination Charging, hub charging facilities, and on-street charging programme throughout Pembrokeshire to improve on existing network.	ULEV

Intervention Name	Description including location(s)	Theme
ULEV - Phase 6 (Fast Charger)	Fast charger upgrades and replacement with rapid chargers	ULEV

DRAFT